

TACC1 RABBIT PAB

Cat.#: S216169

Product Name: Anti-TACC1 Rabbit Polyclonal Antibody

Synonyms: Ga55

UNIPROT ID: O75410 (Gene Accession - NP_006274)

Background: This locus may represent a breast cancer candidate gene. It is located close to FGFR1 on a region of chromosome 8 that is amplified in some breast cancers. Several transcript variants encoding different isoforms have been found for this gene.

Immunogen: Synthetic peptide of human TACC1

Applications: ELISA, IHC

Recommended Dilutions: IHC: 50-200; ELISA: 1000-2000

Host Species: Rabbit

Clonality: Rabbit Polyclonal

Isotype: Immunogen-specific rabbit IgG

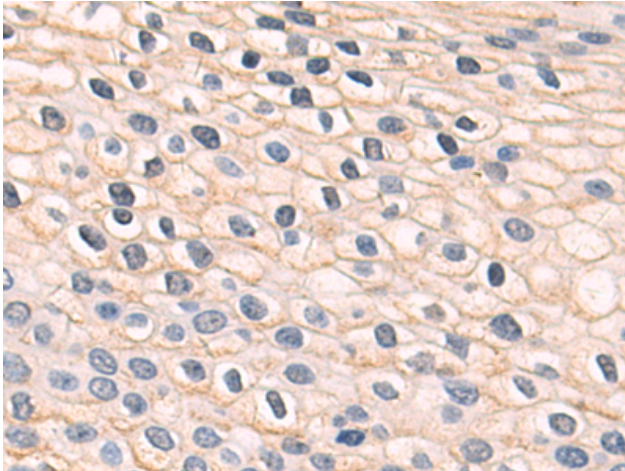
Purification: Antigen affinity purification

Species Reactivity: Human, Mouse

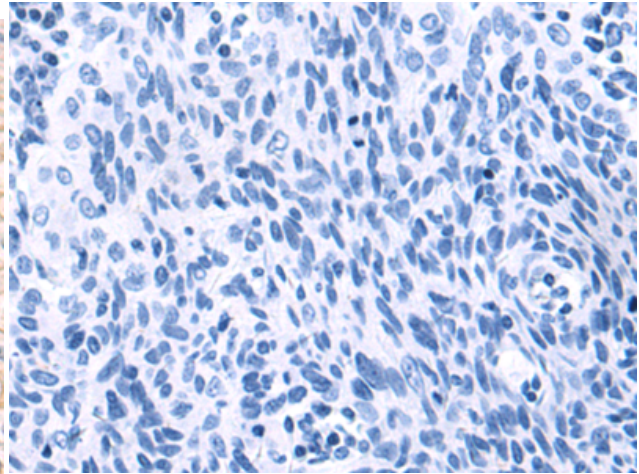
Constituents: PBS (without Mg²⁺ and Ca²⁺), pH 7.4, 150 mM NaCl, 0.05% Sodium Azide and 40% glycerol

Research Areas: Cancer, Epigenetics and Nuclear Signaling

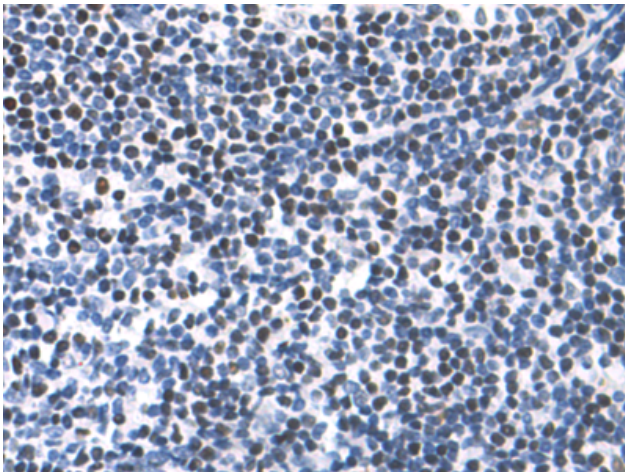
Storage & Shipping: Store at -20°C. Avoid repeated freezing and thawing



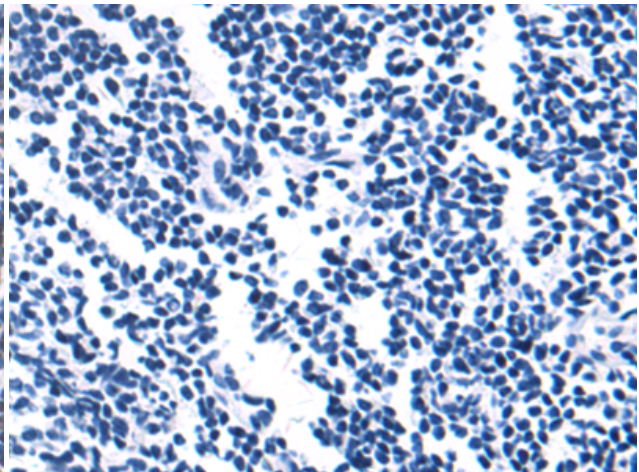
Immunohistochemistry analysis of paraffin embedded Human cervical cancer tissue using 216169 (TACC1 Antibody) at a dilution of 1/50 (Cytoplasm or Nucleus).



In comparison with the IHC on the left, the same paraffin-embedded Human cervical cancer tissue is first treated with the synthetic peptide and then with 216169 (Anti-TACC1 Antibody) at dilution 1/50.



The image on the left is immunohistochemistry of paraffin-embedded Human tonsil tissue using 216169 (Anti-TACC1 Antibody) at a dilution of 1/50.



In comparison with the IHC on the left, the same paraffin-embedded Human tonsil tissue is first treated with synthetic peptide and then with D164564 (Anti-TACC1 Antibody) at dilution 1/50.