

## TACO1 RABBIT PAB

**Cat.#:** S222040

**Product Name:** Anti-TACO1 Rabbit Polyclonal Antibody

**Synonyms:** CCDC44; MC4DN8

**UNIPROT ID:** Q9BSH4 (Gene Accession - NP\_057444 )

**Background:** This gene encodes a mitochondrial protein that function as a translational activator of mitochondrially-encoded cytochrome c oxidase I. Mutations in this gene are associated with Leigh syndrome.

**Immunogen:** Synthetic peptide of human TACO1

**Applications:** ELISA, WB, IHC

**Recommended Dilutions:** IHC: 50-200;WB: 1000-5000;ELISA: 2000-5000

**Host Species:** Rabbit

**Clonality:** Rabbit Polyclonal

**Isotype:** Immunogen-specific rabbit IgG

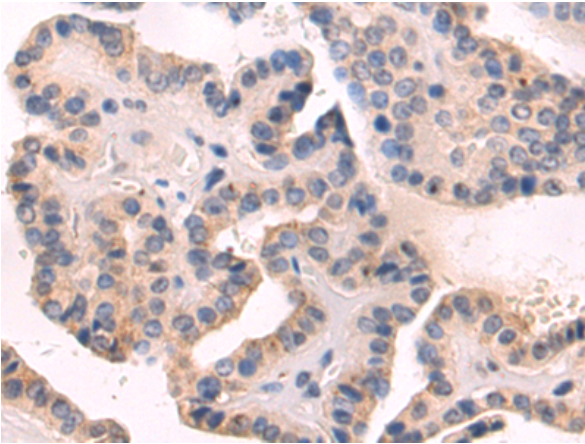
**Purification:** Antigen affinity purification

**Species Reactivity:** Human, Mouse, Rat

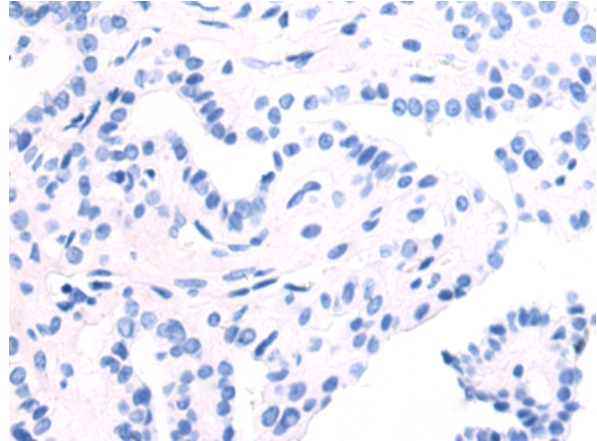
**Constituents:** PBS (without Mg<sup>2+</sup> and Ca<sup>2+</sup>), pH 7.4, 150 mM NaCl, 0.05% Sodium Azide and 40% glycerol

**Research Areas:** Metabolism, Epigenetics and Nuclear Signaling, Cardiovascular

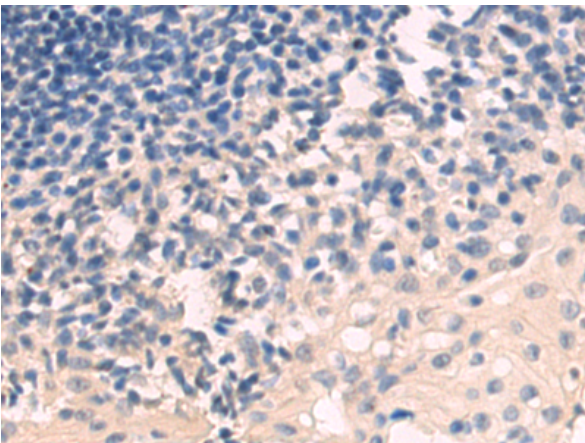
**Storage & Shipping:** Store at -20°C. Avoid repeated freezing and thawing



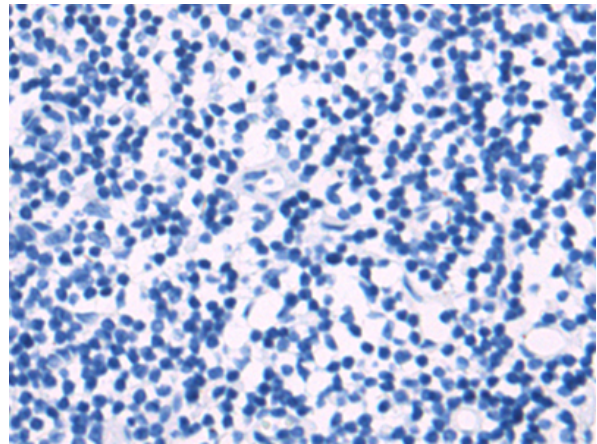
Immunohistochemistry analysis of paraffin embedded Human thyroid cancer tissue using 222040(TACO1 Antibody) at a dilution of 1/50(Cytoplasm).



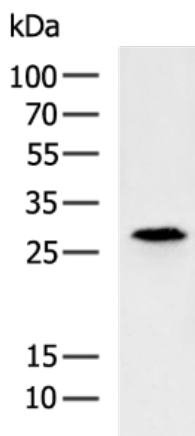
In comparison with the IHC on the left, the same paraffin-embedded Human thyroid cancer tissue is first treated with the synthetic peptide and then with 222040(Anti-TACO1 Antibody) at dilution 1/50.



The image on the left is immunohistochemistry of paraffin-embedded Human tonsil tissue using 222040(Anti-TACO1 Antibody) at a dilution of 1/50.



In comparison with the IHC on the left, the same paraffin-embedded Human tonsil tissue is first treated with synthetic peptide and then with D263924(Anti-TACO1 Antibody) at dilution 1/50.



Gel: 12%SDS-PAGE, Lysate: 40 µg;  
Lane: HeLa cell lysate;  
Primary antibody: 222040(TACO1 Antibody) at dilution 1/1000;  
Secondary antibody: HRP-conjugated Goat anti rabbit IgG at 1/5000 dilution;  
Exposure time: 1 minute



# Product Description

Pioneering GTPase and Oncogene Product Development since 2010

---