

## TACSTD2 RABBIT MAB

**Cat.#:** N262964

**Product Name:** Anti-TACSTD2 Rabbit Monoclonal Antibody

**Synonyms:** TACSTD2; GA733-1; MIS1; TROP2; Tumor-associated calcium signal transducer 2; Cell surface glycoprotein Trop-2; Membrane component chromosome 1 surface marker 1; Pancreatic carcinoma marker protein GA733-1

**UNIPROT ID:** P09758

**Background:** This intronless gene encodes a carcinoma-associated antigen. This antigen is a cell surface receptor that transduces calcium signals. Mutations of this gene have been associated with gelatinous drop-like corneal dystrophy.

**Immunogen:** A synthetic peptide of human TACD2

**Applications:** WB,IHC-F,IHC-P,ICC/IF

**Recommended Dilutions:** WB: 1/500-1/1000 IHC: 1/50-1/100 IF: 1/50-1/200

**Host Species:** Rabbit

**Clonality:** Rabbit Monoclonal

**Clone ID:** R05-312

**MW:** Calculated MW: 36 kDa; Observed MW: 45-65 kDa

**Isotype:** IgG

**Purification:** Affinity Purified

**Species Reactivity:** Human

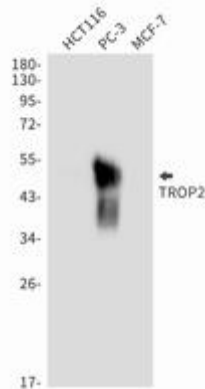
**Conjugation:** Unconjugated

**Modification:** Unmodified

**Constituents:** PBS (without Mg<sup>2+</sup> and Ca<sup>2+</sup>), pH 7.3 containing 50% glycerol, 0.5% BSA and 0.02% sodium azide

**Research Areas:** Cancer

**Storage & Shipping:** Store at -20°C. Avoid repeated freezing and thawing



Western blot analysis of TROP2 in HCT116, PC-3, MCF-7 lysates using TACSTD2 antibody.