

## TACSTD2 RABBIT PAB

**Cat.#:** S211694

**Product Name:** Anti-TACSTD2 Rabbit Polyclonal Antibody

**Synonyms:** EGP1; GP50; MIS1; EGP-1; TROP2; GA7331; GA733-1

**UNIPROT ID:** P09758 (Gene Accession - BC009409 )

**Background:** This intronless gene encodes a carcinoma-associated antigen. This antigen is a cell surface receptor that transduces calcium signals. Mutations of this gene have been associated with gelatinous drop-like corneal dystrophy.

**Immunogen:** Fusion protein of human TACSTD2

**Applications:** ELISA, IHC

**Recommended Dilutions:** IHC: 25-100; ELISA: 2000-5000

**Host Species:** Rabbit

**Clonality:** Rabbit Polyclonal

**Isotype:** Immunogen-specific rabbit IgG

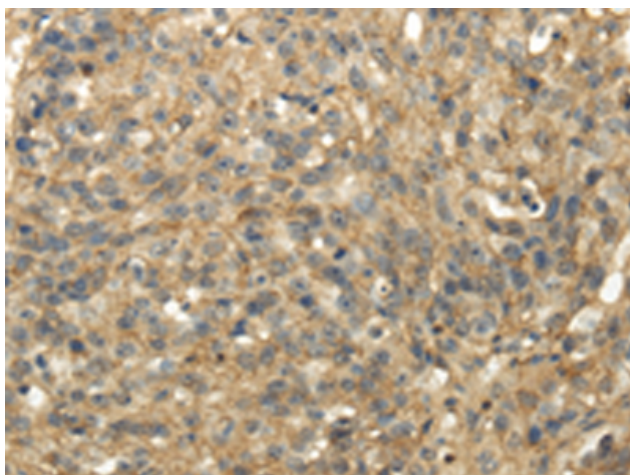
**Purification:** Antigen affinity purification

**Species Reactivity:** Human, Mouse, Rat

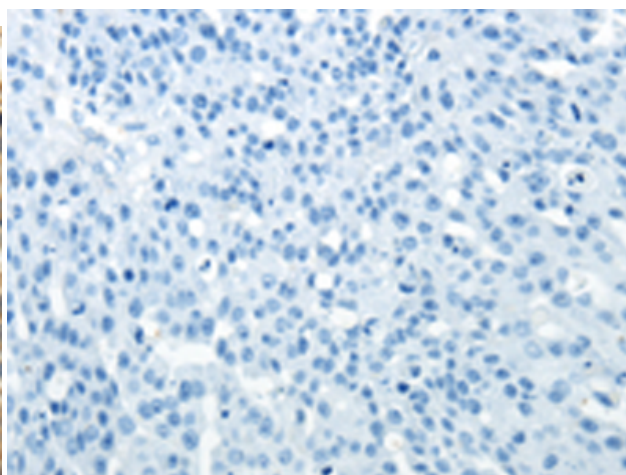
**Constituents:** PBS (without Mg<sup>2+</sup> and Ca<sup>2+</sup>), pH 7.4, 150 mM NaCl, 0.05% Sodium Azide and 40% glycerol

**Research Areas:** Cancer

**Storage & Shipping:** Store at -20°C. Avoid repeated freezing and thawing



Immunohistochemistry analysis of paraffin embedded Human breast cancer tissue using 211694(TACSTD2 Antibody) at a dilution of 1/35(Cell membrane and Cytoplasm).



In comparison with the IHC on the left, the same paraffin-embedded Human breast cancer tissue is first treated with the fusion protein and then with 211694(Anti-TACSTD2 Antibody) at dilution 1/35.