

TAGLN2 RABBIT PAB

Cat.#: S216786

Product Name: Anti-TAGLN2 Rabbit Polyclonal Antibody

Synonyms: HA1756

UNIPROT ID: P37802 (Gene Accession - BC009357)

Background: The protein encoded by this gene is similar to the protein transgelin, which is one of the earliest markers of differentiated smooth muscle. The specific function of this protein has not yet been determined, although it is thought to be a tumor suppressor. Multiple transcript variants encoding different isoforms have been found for this gene.

Immunogen: Fusion protein of human TAGLN2

Applications: ELISA, WB, IHC

Recommended Dilutions: IHC: 200-400;WB: 1000-5000;ELISA: 5000-10000

Host Species: Rabbit

Clonality: Rabbit Polyclonal

Isotype: Immunogen-specific rabbit IgG

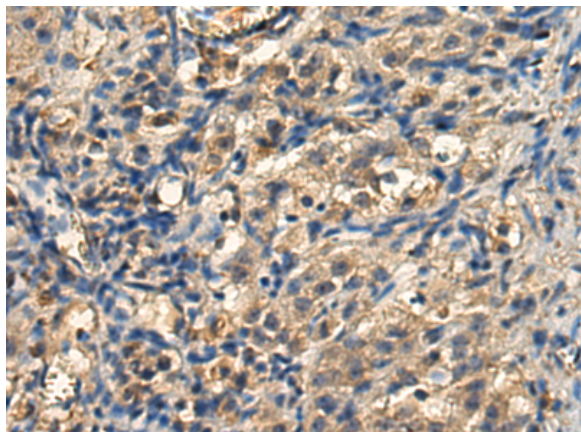
Purification: Antigen affinity purification

Species Reactivity: Human, Mouse, Rat

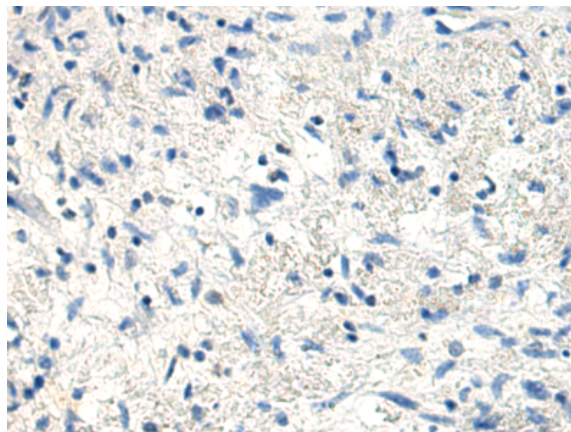
Constituents: PBS (without Mg²⁺ and Ca²⁺), pH 7.4, 150 mM NaCl, 0.05% Sodium Azide and 40% glycerol

Research Areas: Cancer

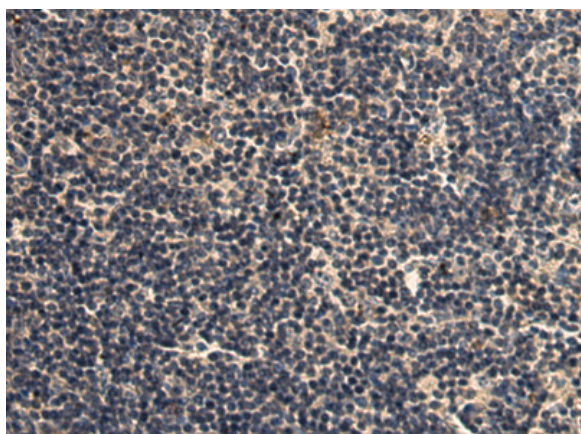
Storage & Shipping: Store at -20°C. Avoid repeated freezing and thawing



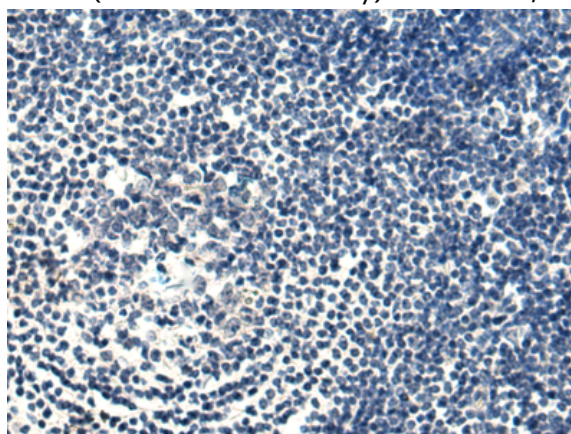
Immunohistochemistry analysis of paraffin embedded Human ovarian cancer tissue using 216786(TAGLN2 Antibody) at a dilution of 1/240(Cytoplasm).



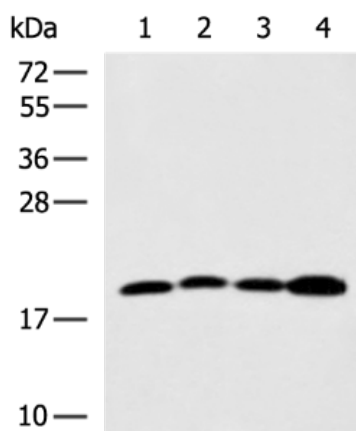
In comparison with the IHC on the left, the same paraffin-embedded Human ovarian cancer tissue is first treated with the fusion protein and then with 216786(Anti-TAGLN2 Antibody) at dilution 1/240.



The image on the left is immunohistochemistry of paraffin-embedded Human esophagus cancer tissue using 216786(Anti-TAGLN2 Antibody) at a dilution of 1/240.



In comparison with the IHC on the left, the same paraffin-embedded Human esophagus cancer tissue is first treated with fusion protein and then with D221236(Anti-TAGLN2 Antibody) at dilution 1/240.



Gel: 12%SDS-PAGE, Lysate: 40 µg;
 Lane 1-4: MCF7 cell, Mouse lung tissue, Hela and A375 cell lysates;
 Primary antibody: 216786(TAGLN2 Antibody) at dilution 1/1000;
 Secondary antibody: HRP-conjugated Goat anti rabbit IgG at 1/5000 dilution;
 Exposure time: 2 minutes



Product Description

Pioneering GTPase and Oncogene Product Development since 2010
