

TARBP2 RABBIT MAB

Cat.#: N263019

Product Name: Anti-TARBP2 Rabbit Monoclonal Antibody

Synonyms: LOQS; Prbp; tarbp2; TRBP; TRBP1; TRBP2

UNIPROT ID: Q15633

Background: Required for formation of the RNA induced silencing complex (RISC). Component of the RISC loading complex (RLC), also known as the micro-RNA (miRNA) loading complex (miRLC), which is composed of DICER1, EIF2C2/AGO2 and TARBP2.

Immunogen: A synthetic peptide of human TRBP

Applications: WB,IHC-F,IHC-P,ICC/IF,IP

Recommended Dilutions: WB: 1/500-1/1000 IHC: 1/50-1/100 IF: 1/50-1/200 IP: 1/20

Host Species: Rabbit

Clonality: Rabbit Monoclonal

Clone ID: R04-511

MW: Calculated MW: 39 kDa; Observed MW: 39 kDa

Isotype: IgG

Purification: Affinity Purified

Species Reactivity: Human,Mouse,Rat

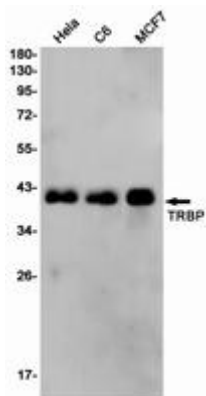
Conjugation: Unconjugated

Modification: Unmodified

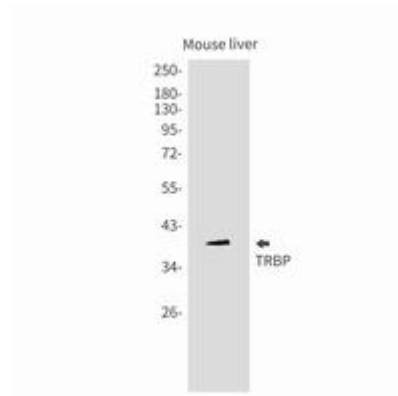
Constituents: PBS (without Mg²⁺ and Ca²⁺), pH 7.3 containing 50% glycerol, 0.5% BSA and 0.02% sodium azide

Research Areas: Microbiology

Storage & Shipping: Store at -20°C. Avoid repeated freezing and thawing



Western blot analysis of TRBP in HeLa, C6, MCF-7 lysates using TRBP antibody.



Western blot analysis of TRBP in mouse liver lysates using TARBP2 antibody.