

TATA BOX BINDING PROTEIN RABBIT MAB

Cat.#: N263571

Product Name: Anti-TATA Box Binding Protein Rabbit Monoclonal Antibody

Synonyms: TBP; GTF2D1; TF2D; TFIID; TATA-box-binding protein; TATA sequence-binding protein; TATA-binding factor; TATA-box factor; Transcription initiation factor TFIID TBP subunit

UNIPROT ID: P20226

Background: As one of the few proteins in the preinitiation complex that binds DNA in a sequence-specific manner, it helps position RNA polymerase II over the transcription start site of the gene. However, it is estimated that only 10-20% of human promoters have TATA boxes. Therefore, TBP is probably not the only protein involved in positioning RNA polymerase II. This protein is not suitable for samples where the nuclear envelope has been removed.

Immunogen: A synthetic peptide of human TATA binding protein TBP

Applications: WB,IHC-F,IHC-P,ICC/IF,IP

Recommended Dilutions: WB: 1/500-1/1000 IHC: 1/50-1/100 IF: 1/50-1/200 IP: 1/20

Host Species: Rabbit

Clonality: Rabbit Monoclonal

Clone ID: R04-6D1

MW: Calculated MW: 38 kDa; Observed MW: 38 kDa

Isotype: IgG

Purification: Affinity Purified

Species Reactivity: Human,Mouse

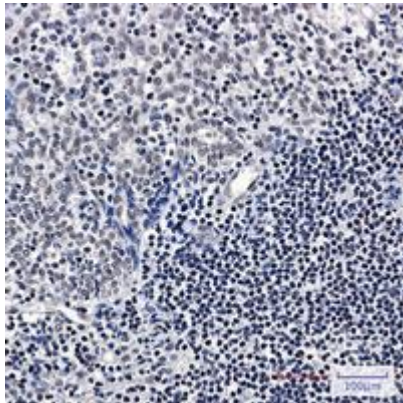
Conjugation: Unconjugated

Modification: Unmodified

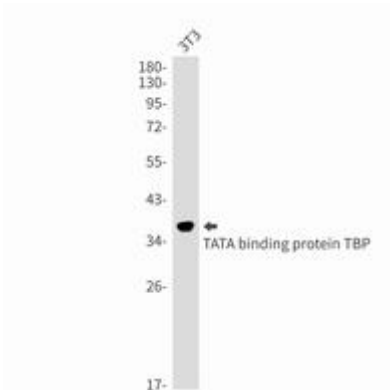
Constituents: PBS (without Mg²⁺ and Ca²⁺), pH 7.3 containing 50% glycerol, 0.5% BSA and 0.02% sodium azide

Research Areas: Epigenetics and Nuclear Signaling

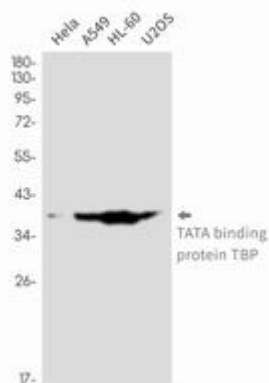
Storage & Shipping: Store at -20°C. Avoid repeated freezing and thawing



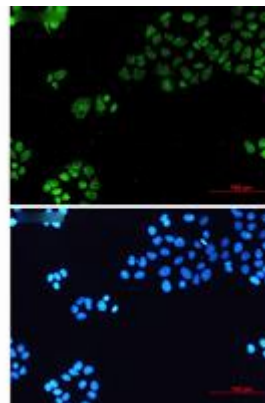
Immunohistochemistry analysis of paraffin-embedded Human tonsil using TATA binding protein TBP antibody. High-pressure and temperature Sodium Citrate pH 6.0 was used for antigen retrieval.



Western blot analysis of TATA binding protein TBP in 3T3 lysates using TATA Box Binding Protein antibody.



Western blot analysis of TATA binding protein TBP in HeLa, A549, HL-60, U2OS lysates using TATA binding protein TBP antibody.



Immunocytochemistry analysis of TATA binding protein TBP (green) in heLa using TATA binding protein TBP antibody, and DAPI (blue).