

## TBC1D1 RABBIT PAB

**Cat.#:** S221001

**Product Name:** Anti-TBC1D1 Rabbit Polyclonal Antibody

**Synonyms:** TBC; TBC1

**UNIPROT ID:** Q86TI0 (Gene Accession - NP\_055988 )

**Background:** TBC1D1 is the founding member of a family of proteins sharing a 180- to 200-amino acid TBC domain presumed to have a role in regulating cell growth and differentiation. These proteins share significant homology with TRE2.

**Immunogen:** Synthetic peptide of human TBC1D1

**Applications:** ELISA, IHC

**Recommended Dilutions:** IHC: 40-150; ELISA: 2000-5000

**Host Species:** Rabbit

**Clonality:** Rabbit Polyclonal

**Isotype:** Immunogen-specific rabbit IgG

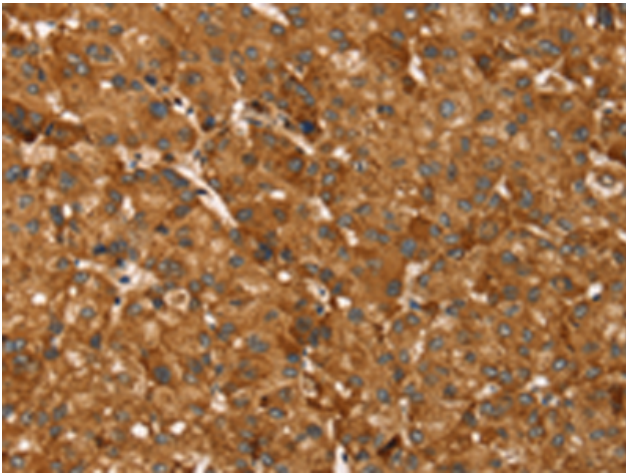
**Purification:** Antigen affinity purification

**Species Reactivity:** Human

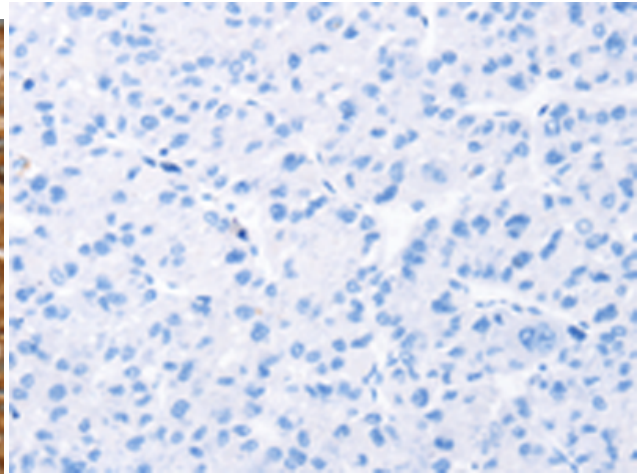
**Constituents:** PBS (without Mg<sup>2+</sup> and Ca<sup>2+</sup>), pH 7.4, 150 mM NaCl, 0.05% Sodium Azide and 40% glycerol

**Research Areas:** Signal Transduction

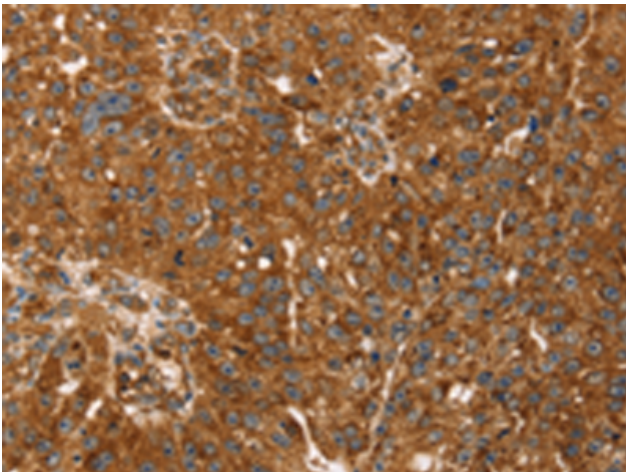
**Storage & Shipping:** Store at -20°C. Avoid repeated freezing and thawing



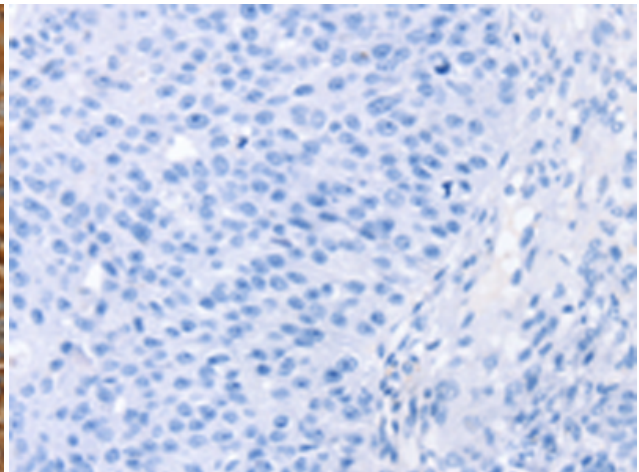
Immunohistochemistry analysis of paraffin embedded Human liver cancer tissue using 221001(TBC1D1 Antibody) at a dilution of 1/45(Cytoplasm and Cell membrane).



In comparison with the IHC on the left, the same paraffin-embedded Human liver cancer tissue is first treated with the synthetic peptide and then with 221001(Anti-TBC1D1 Antibody) at dilution 1/45.



The image on the left is immunohistochemistry of paraffin-embedded Human breast cancer tissue using 221001(Anti-TBC1D1 Antibody) at a dilution of 1/45.



In comparison with the IHC on the left, the same paraffin-embedded Human breast cancer tissue is first treated with synthetic peptide and then with D262342(Anti-TBC1D1 Antibody) at dilution 1/45.