

TBC1D2 RABBIT PAB

Cat.#: S218728

Product Name: Anti-TBC1D2 Rabbit Polyclonal Antibody

Synonyms: PARIS1; PARIS-1; TBC1D2A

UNIPROT ID: Q9BYX2 (Gene Accession - BC028918)

Background: Acts as GTPase-activating protein for RAB7A. Signal effector acting as a linker between RAC1 and RAB7A, leading to RAB7A inactivation and subsequent inhibition of cadherin degradation and reduced cell-cell adhesion.

Immunogen: Fusion protein of human TBC1D2

Applications: ELISA, IHC

Recommended Dilutions: IHC: 30-150; ELISA: 5000-10000

Host Species: Rabbit

Clonality: Rabbit Polyclonal

Isotype: Immunogen-specific rabbit IgG

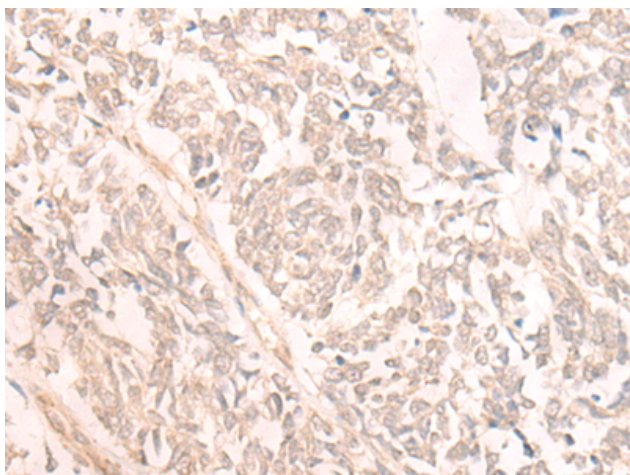
Purification: Antigen affinity purification

Species Reactivity: Human, Mouse, Rat

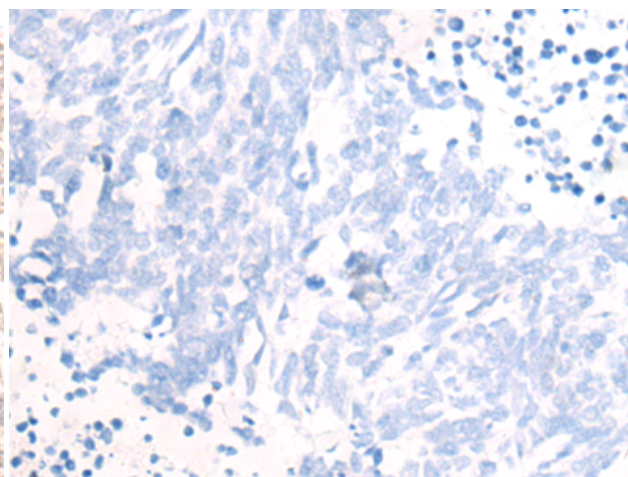
Constituents: PBS (without Mg²⁺ and Ca²⁺), pH 7.4, 150 mM NaCl, 0.05% Sodium Azide and 40% glycerol

Research Areas: Signal Transduction, Cancer

Storage & Shipping: Store at -20°C. Avoid repeated freezing and thawing



Immunohistochemistry analysis of paraffin embedded Human lung cancer tissue using 218728(TBC1D2 Antibody) at a dilution of 1/20(Nucleus).



In comparison with the IHC on the left, the same paraffin-embedded Human lung cancer tissue is first treated with the fusion protein and then with 218728(Anti-TBC1D2 Antibody) at dilution 1/20.