

## TBC1D22A RABBIT PAB

**Cat.#:** S217882

**Product Name:** Anti-TBC1D22A Rabbit Polyclonal Antibody

**Synonyms:** C22orf4; HSC79E021

**UNIPROT ID:** Q8WUA7 (Gene Accession - BC002743 )

**Background:** TBC1D22A (TBC1 domain family, member 22A), also known as C22orf4, is a 517 amino acid protein that contains one Rab-GAP TBC domain and is thought to function as a GTPase-activating protein for Rab family members. Multiple isoforms of TBC1D22A exist due to alternative splicing events. The gene encoding TBC1D22A maps to human chromosome 22, which houses over 500 genes and is the second smallest human chromosome.

**Immunogen:** Fusion protein of human TBC1D22A

**Applications:** ELISA, WB, IHC

**Recommended Dilutions:** IHC: 25-100;WB: 500-2000;ELISA: 2000-5000

**Host Species:** Rabbit

**Clonality:** Rabbit Polyclonal

**Isotype:** Immunogen-specific rabbit IgG

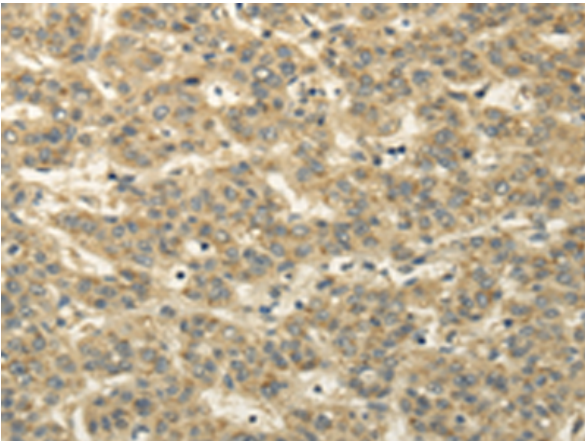
**Purification:** Antigen affinity purification

**Species Reactivity:** Human, Mouse

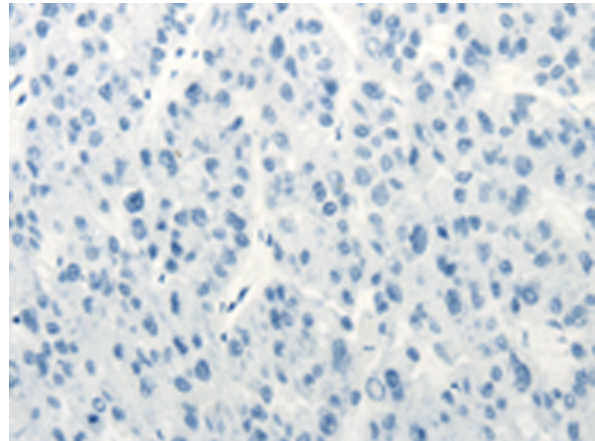
**Constituents:** PBS (without Mg<sup>2+</sup> and Ca<sup>2+</sup>), pH 7.4, 150 mM NaCl, 0.05% Sodium Azide and 40% glycerol

**Research Areas:** Signal Transduction

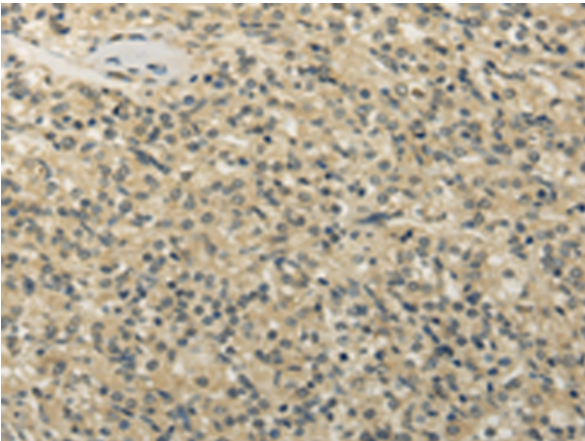
**Storage & Shipping:** Store at -20°C. Avoid repeated freezing and thawing



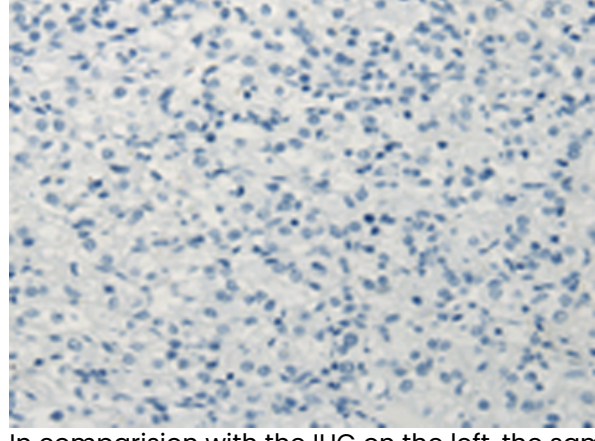
Immunohistochemistry analysis of paraffin embedded Human liver cancer tissue using 217882(TBC1D22A Antibody) at a dilution of 1/20(Cytoplasm).



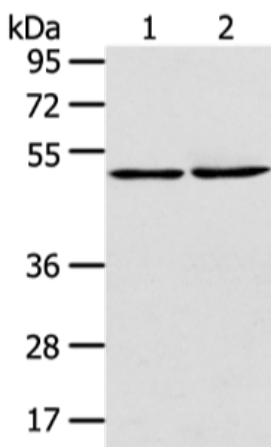
In comparison with the IHC on the left, the same paraffin-embedded Human liver cancer tissue is first treated with the fusion protein and then with 217882(Anti-TBC1D22A Antibody) at dilution 1/20.



The image on the left is immunohistochemistry of paraffin-embedded Human prostate cancer tissue using 217882(Anti-TBC1D22A Antibody) at a dilution of 1/20.



In comparison with the IHC on the left, the same paraffin-embedded Human prostate cancer tissue is first treated with fusion protein and then with D223293(Anti-TBC1D22A Antibody) at dilution 1/20.



Gel: 8%SDS-PAGE, Lysate: 40 µg;  
 Lane 1-2: A431 cell and human lung cancer tissue;  
 Primary antibody: 217882(TBC1D22A Antibody) at dilution 1/300;  
 Secondary antibody: Goat anti rabbit IgG at 1/8000 dilution;  
 Exposure time: 1 minute



# Product Description

Pioneering GTPase and Oncogene Product Development since 2010

---