

TBL1XR1 RABBIT PAB

Cat.#: S217883

Product Name: Anti-TBL1XR1 Rabbit Polyclonal Antibody

Synonyms: C21; DC42; IRA1; MRD41; TBLR1

UNIPROT ID: Q9BZK7 (Gene Accession - BC113421)

Background: This gene is a member of the WD40 repeat-containing gene family and shares sequence similarity with transducin (beta)-like 1X-linked (TBL1X). The protein encoded by this gene is thought to be a component of both nuclear receptor corepressor (N-CoR) and histone deacetylase 3 (HDAC 3) complexes, and is required for transcriptional activation by a variety of transcription factors. Mutations in these gene have been associated with some autism spectrum disorders, and one finding suggests that haploinsufficiency of this gene may be a cause of intellectual disability with dysmorphism. Mutations in this gene as well as recurrent translocations involving this gene have also been observed in some tumors.

Immunogen: Fusion protein of human TBL1XR1

Applications: ELISA, WB, IHC

Recommended Dilutions: IHC: 50-200;WB: 1000-5000;ELISA: 5000-10000

Host Species: Rabbit

Clonality: Rabbit Polyclonal

Isotype: Immunogen-specific rabbit IgG

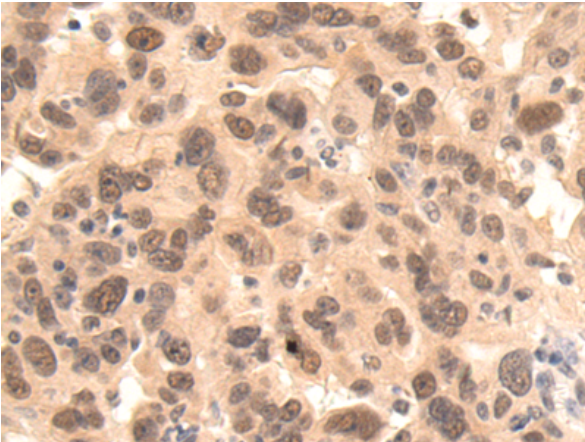
Purification: Antigen affinity purification

Species Reactivity: Human, Mouse

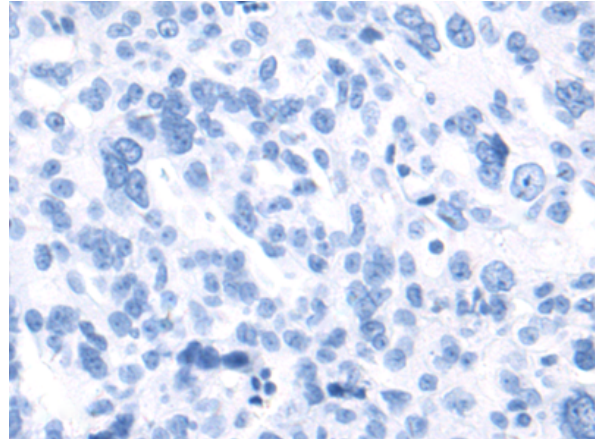
Constituents: PBS (without Mg²⁺ and Ca²⁺), pH 7.4, 150 mM NaCl, 0.05% Sodium Azide and 40% glycerol

Research Areas: Epigenetics and Nuclear Signaling, Cancer, Metabolism

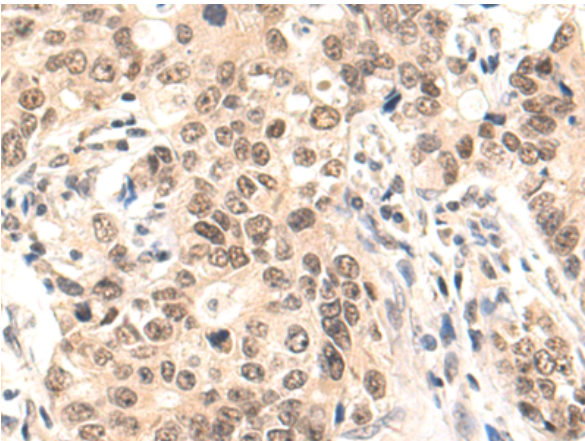
Storage & Shipping: Store at -20°C. Avoid repeated freezing and thawing



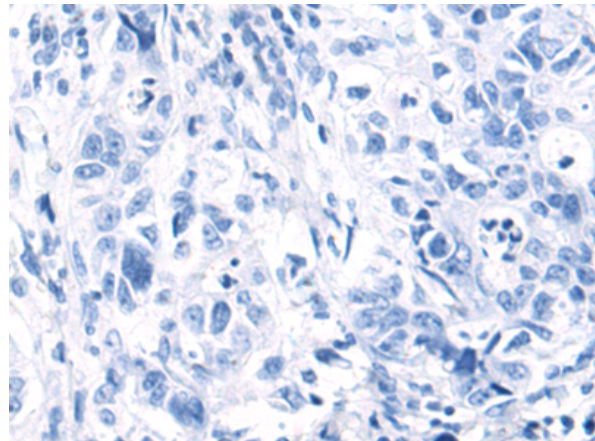
Immunohistochemistry analysis of paraffin embedded Human breast cancer tissue using 217883 (TBL1XR1 Antibody) at a dilution of 1/75 (Nucleus).



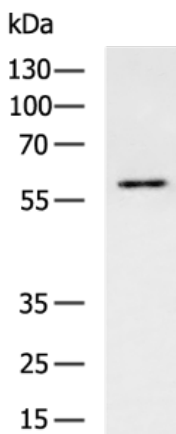
In comparison with the IHC on the left, the same paraffin-embedded Human breast cancer tissue is first treated with the fusion protein and then with 217883 (Anti-TBL1XR1 Antibody) at dilution 1/75.



The image on the left is immunohistochemistry of paraffin-embedded Human gastric cancer tissue using 217883 (Anti-TBL1XR1 Antibody) at a dilution of 1/75.



In comparison with the IHC on the left, the same paraffin-embedded Human gastric cancer tissue is first treated with fusion protein and then with D223295 (Anti-TBL1XR1 Antibody) at dilution 1/75.



Gel: 8% SDS-PAGE, Lysate: 40 µg;
Lane: K562 cell lysate;
Primary antibody: 217883 (TBL1XR1 Antibody) at dilution 1/1200;
Secondary antibody: HRP-conjugated Goat anti rabbit IgG at 1/5000 dilution;
Exposure time: 10 seconds



Product Description

Pioneering GTPase and Oncogene Product Development since 2010
