

TBX10 RABBIT PAB

Cat.#: S217884

Product Name: Anti-TBX10 Rabbit Polyclonal Antibody

Synonyms: TBX7; TBX13

UNIPROT ID: O75333 (Gene Accession - BC113485)

Background: This gene encodes a member of the T-box family of transcription factors. These transcription factors share a DNA-binding domain called the T-box and play a role in several developmental processes including early embryonic cell fate and organogenesis. The encoded protein is a member of the T-box 1 subfamily. Mutations in this gene are thought to be a cause of isolated cleft lip with or without cleft palate.

Immunogen: Fusion protein of human TBX10

Applications: ELISA, IHC

Recommended Dilutions: IHC: 25-100; ELISA: 2000-5000

Host Species: Rabbit

Clonality: Rabbit Polyclonal

Isotype: Immunogen-specific rabbit IgG

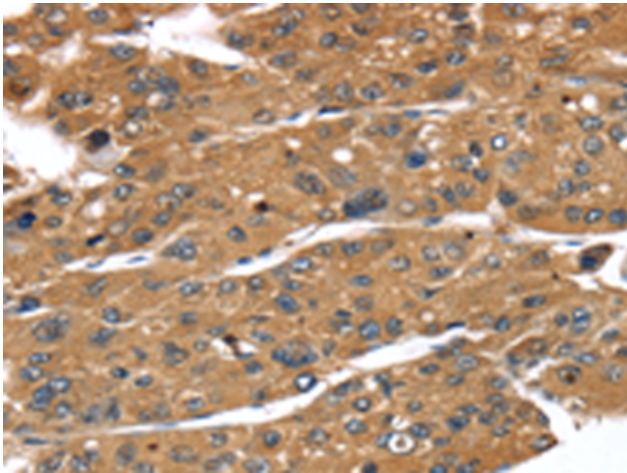
Purification: Antigen affinity purification

Species Reactivity: Human

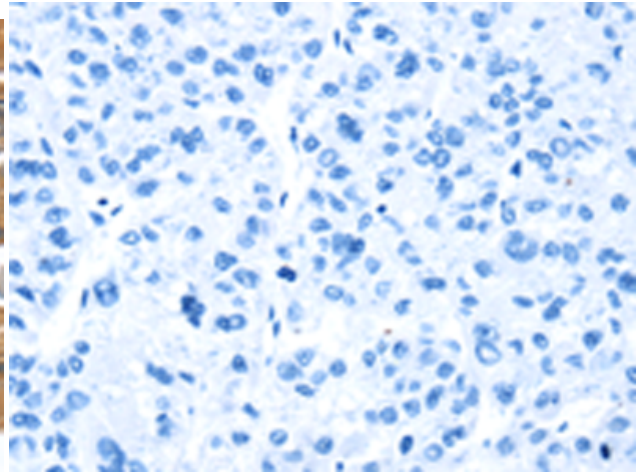
Constituents: PBS (without Mg²⁺ and Ca²⁺), pH 7.4, 150 mM NaCl, 0.05% Sodium Azide and 40% glycerol

Research Areas: Epigenetics and Nuclear Signaling

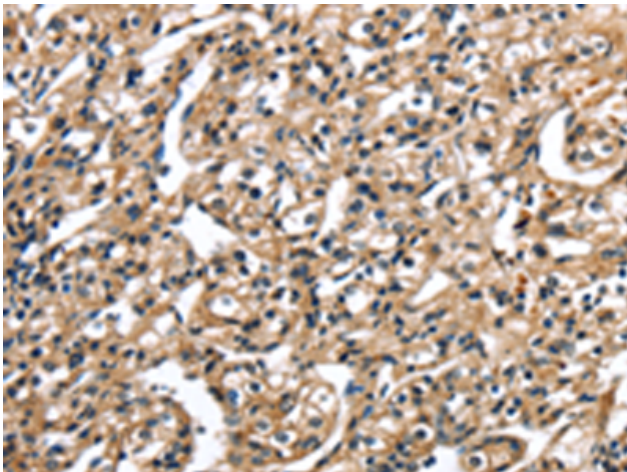
Storage & Shipping: Store at -20°C. Avoid repeated freezing and thawing



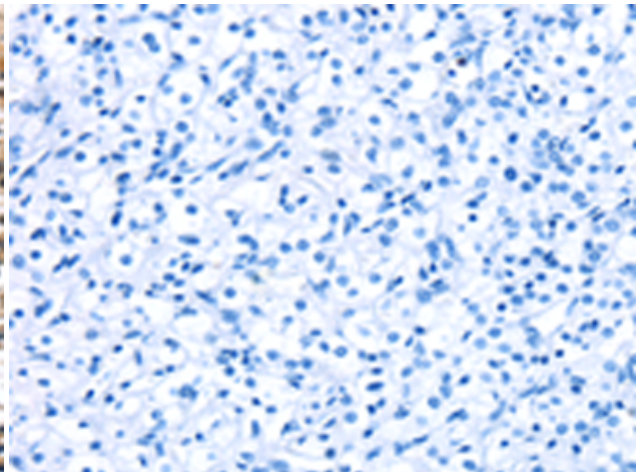
Immunohistochemistry analysis of paraffin embedded Human liver cancer tissue using 217884(TBX10 Antibody) at a dilution of 1/35(Cytoplasm).



In comparison with the IHC on the left, the same paraffin-embedded Human liver cancer tissue is first treated with the fusion protein and then with 217884(Anti-TBX10 Antibody) at dilution 1/35.



The image on the left is immunohistochemistry of paraffin-embedded Human prostate cancer tissue using 217884(Anti-TBX10 Antibody) at a dilution of 1/35.



In comparison with the IHC on the left, the same paraffin-embedded Human prostate cancer tissue is first treated with fusion protein and then with D223298(Anti-TBX10 Antibody) at dilution 1/35.