

TBX2 RABBIT PAB

Cat.#: S213531

Product Name: Anti-TBX2 Rabbit Polyclonal Antibody

Synonyms:

UNIPROT ID: Q13207 (Gene Accession - NP_005985)

Background: This gene is a member of a phylogenetically conserved family of genes that share a common DNA-binding domain, the T-box. T-box genes encode transcription factors involved in the regulation of developmental processes. This gene product is the human homolog of mouse Tbx2, and shares strong sequence similarity with Drosophila omb protein. Expression studies indicate that this gene may have a potential role in tumorigenesis as an immortalizing agent. Transcript heterogeneity due to alternative polyadenylation has been noted for this gene.

Immunogen: Synthetic peptide of human TBX2

Applications: ELISA, IHC

Recommended Dilutions: IHC: 25-100; ELISA: 1000-5000

Host Species: Rabbit

Clonality: Rabbit Polyclonal

Isotype: Immunogen-specific rabbit IgG

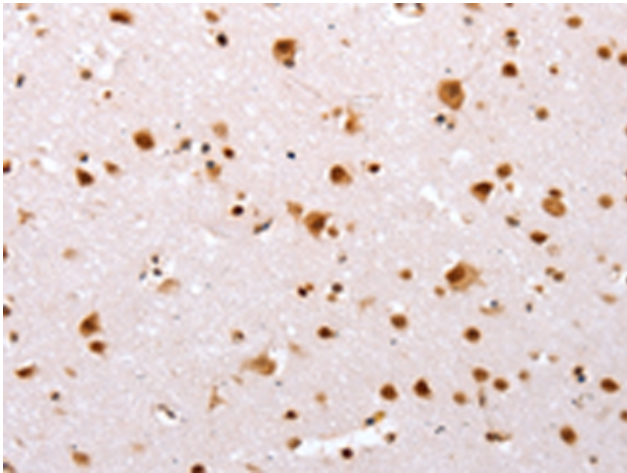
Purification: Antigen affinity purification

Species Reactivity: Human, Mouse

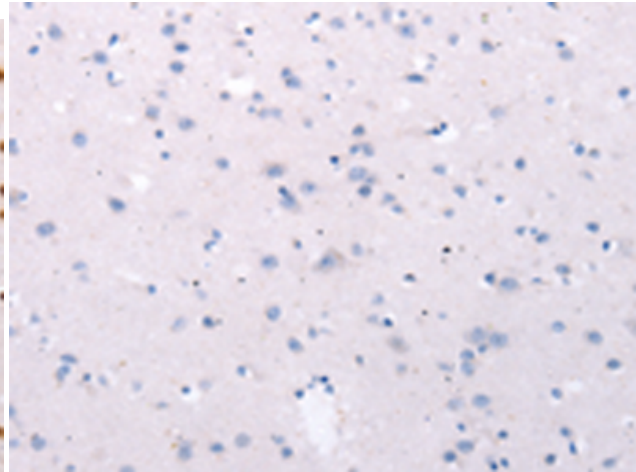
Constituents: PBS (without Mg²⁺ and Ca²⁺), pH 7.4, 150 mM NaCl, 0.05% Sodium Azide and 40% glycerol

Research Areas: Epigenetics and Nuclear Signaling, Cancer

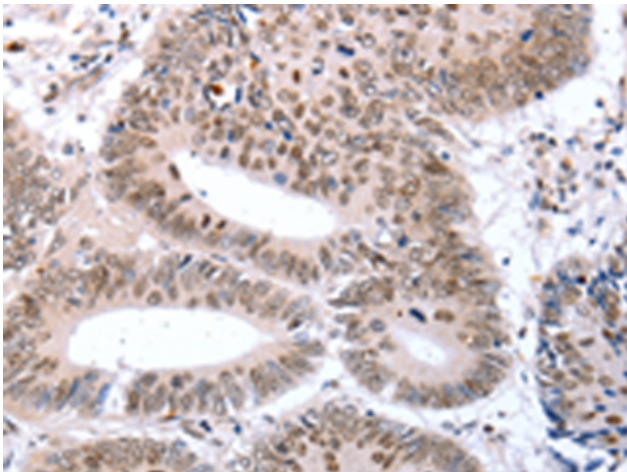
Storage & Shipping: Store at -20°C. Avoid repeated freezing and thawing



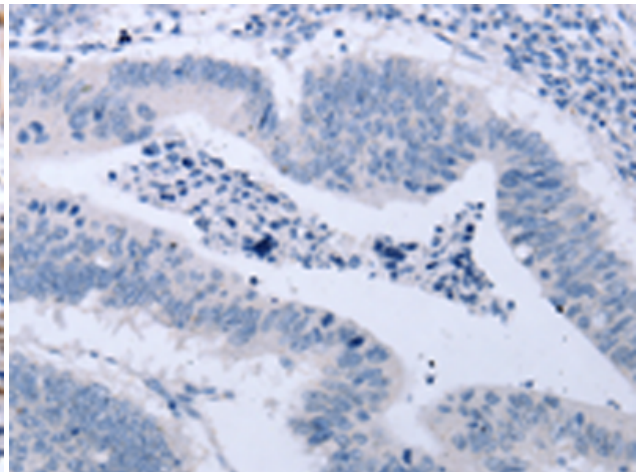
Immunohistochemistry analysis of paraffin embedded Human brain tissue using 213531(TBX2 Antibody) at a dilution of 1/32(Cytoplasm, Nucleus).



In comparison with the IHC on the left, the same paraffin-embedded Human brain tissue is first treated with the synthetic peptide and then with 213531(Anti-TBX2 Antibody) at dilution 1/32.



The image on the left is immunohistochemistry of paraffin-embedded Human colon cancer tissue using 213531(Anti-TBX2 Antibody) at a dilution of 1/32.



In comparison with the IHC on the left, the same paraffin-embedded Human colon cancer tissue is first treated with synthetic peptide and then with D160369(Anti-TBX2 Antibody) at dilution 1/32.