

## TBXA2R RABBIT PAB

**Cat.#:** S221068

**Product Name:** Anti-TBXA2R Rabbit Polyclonal Antibody

**Synonyms:** TXA2-R; BDPLT13

**UNIPROT ID:** P21731 (Gene Accession - NP\_001051 )

**Background:** This gene encodes a member of the G protein-coupled receptor family. The protein interacts with thromboxane A2 to induce platelet aggregation and regulate hemostasis. A mutation in this gene results in a bleeding disorder. Multiple transcript variants encoding different isoforms have been found for this gene.

**Immunogen:** Synthetic peptide of human TBXA2R

**Applications:** ELISA, WB, IHC

**Recommended Dilutions:** IHC: 30-150;WB: 500-2000;ELISA: 2000-5000

**Host Species:** Rabbit

**Clonality:** Rabbit Polyclonal

**Isotype:** Immunogen-specific rabbit IgG

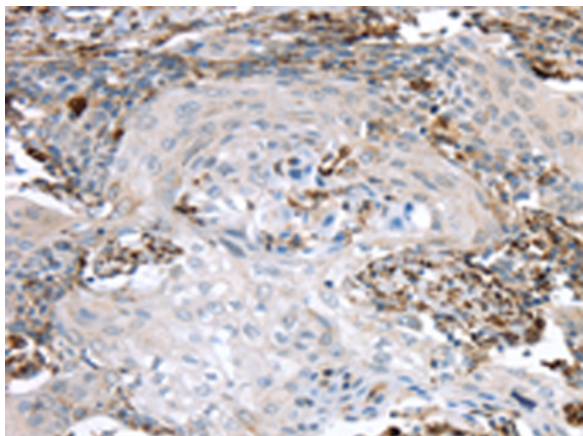
**Purification:** Antigen affinity purification

**Species Reactivity:** Human

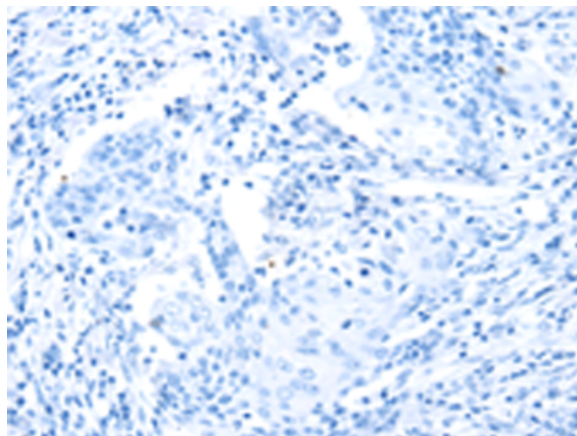
**Constituents:** PBS (without Mg<sup>2+</sup> and Ca<sup>2+</sup>), pH 7.4, 150 mM NaCl, 0.05% Sodium Azide and 40% glycerol

**Research Areas:** Metabolism, Cardiovascular

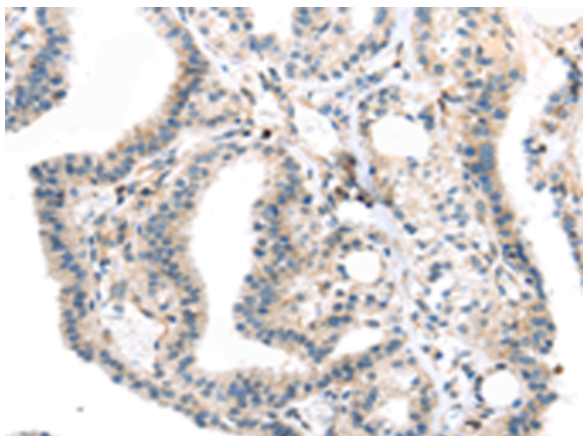
**Storage & Shipping:** Store at -20°C. Avoid repeated freezing and thawing



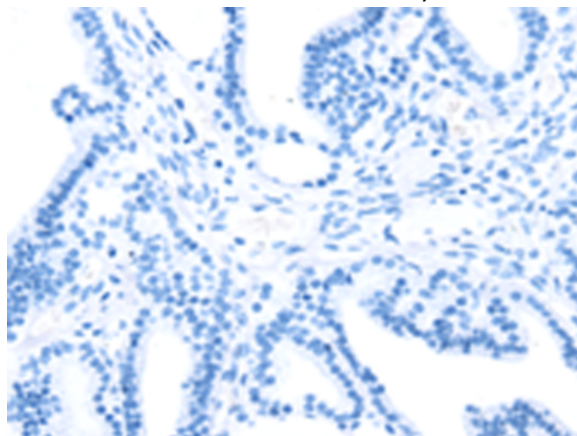
Immunohistochemistry analysis of paraffin embedded Human cervical cancer tissue using 221068(TBXA2R Antibody) at a dilution of 1/40(Cell membrane).



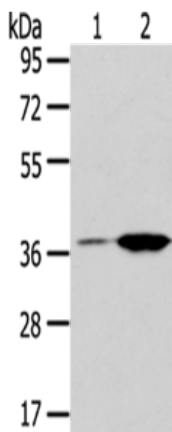
In comparison with the IHC on the left, the same paraffin-embedded Human cervical cancer tissue is first treated with the synthetic peptide and then with 221068(Anti-TBXA2R Antibody) at dilution 1/40.



The image on the left is immunohistochemistry of paraffin-embedded Human thyroid cancer tissue using 221068(Anti-TBXA2R Antibody) at a dilution of 1/40.



In comparison with the IHC on the left, the same paraffin-embedded Human thyroid cancer tissue is first treated with synthetic peptide and then with D262436(Anti-TBXA2R Antibody) at dilution 1/40.



Gel: 8%SDS-PAGE, Lysate: 40 µg;  
Lane 1-2: Raji cells, Jurkat cells;  
Primary antibody: 221068(TBXA2R Antibody) at dilution 1/200;  
Secondary antibody: Goat anti rabbit IgG at 1/8000 dilution;  
Exposure time: 40 seconds



# Product Description

Pioneering GTPase and Oncogene Product Development since 2010

---