

## TCEA1 RABBIT MAB

**Cat.#:** N262979

**Product Name:** Anti-TCEA1 Rabbit Monoclonal Antibody

**Synonyms:** SII; TCEA; TF2S; GTF2S; TFIIS

**UNIPROT ID:** P23193

**Background:** Necessary for efficient RNA polymerase II transcription elongation past template-encoded arresting sites. The arresting sites in DNA have the property of trapping a certain fraction of elongating RNA polymerases that pass through, resulting in locked ternary complexes. Cleavage of the nascent transcript by S-II allows the resumption of elongation from the new 3'-terminus. Miscellaneous S-II binds to RNA-polymerase II in the absence of transcription.

**Immunogen:** A synthetic peptide of human TCEA1

**Applications:** WB, IHC-F, IHC-P, ICC/IF, IP

**Recommended Dilutions:** WB: 1/500-1/1000 IHC: 1/50-1/100 IF: 1/50-1/200 IP: 1/20

**Host Species:** Rabbit

**Clonality:** Rabbit Monoclonal

**Clone ID:** R01-2H8

**MW:** Calculated MW: 34 kDa; Observed MW: 34 kDa

**Isotype:** IgG

**Purification:** Affinity Purified

**Species Reactivity:** Human, Rat

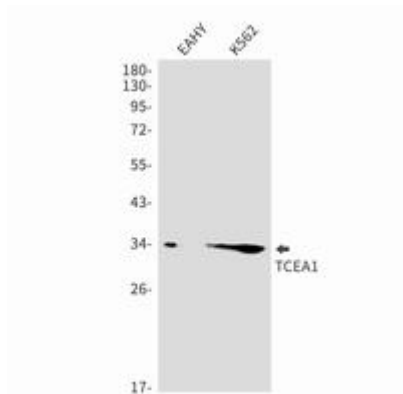
**Conjugation:** Unconjugated

**Modification:** Unmodified

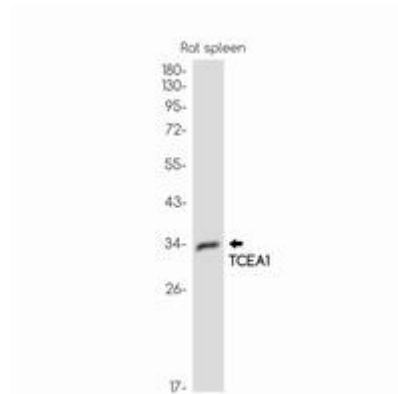
**Constituents:** PBS (without Mg<sup>2+</sup> and Ca<sup>2+</sup>), pH 7.3 containing 50% glycerol, 0.5% BSA and 0.02% sodium azide

**Research Areas:** Epigenetics and Nuclear Signaling

**Storage & Shipping:** Store at -20°C. Avoid repeated freezing and thawing



Western blot analysis of TCEA1 in EAHY, K562 lysates using TCEA1 antibody.



Western blot analysis of TCEA1 in rat spleen lysates using TCEA1 antibody.