

TCF25 RABBIT PAB

Cat.#: S218767

Product Name: Anti-TCF25 Rabbit Polyclonal Antibody

Synonyms: Hulp1; NULP1; FKSG26; PRO2620; hKIAA1049

UNIPROT ID: Q9BQ70 (Gene Accession - BC009349)

Background: May play a role in cell death control. Acts as a transcriptional repressor. Has been shown to repress transcription of SRF in vitro and so may play a role in heart development.

Immunogen: Fusion protein of human TCF25

Applications: ELISA, WB, IHC

Recommended Dilutions: IHC: 30-150;WB: 500-2000;ELISA: 5000-10000

Host Species: Rabbit

Clonality: Rabbit Polyclonal

Isotype: Immunogen-specific rabbit IgG

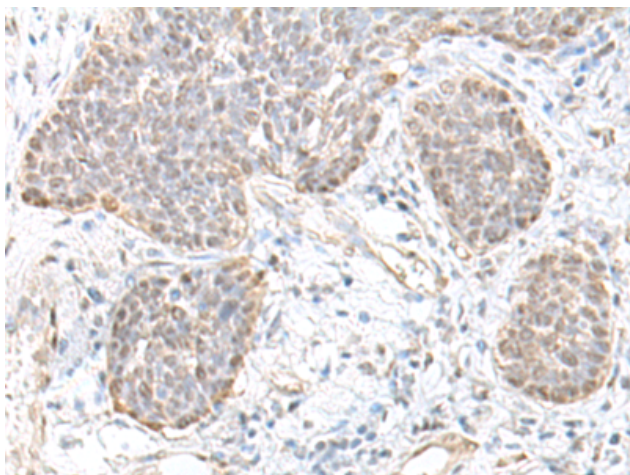
Purification: Antigen affinity purification

Species Reactivity: Human, Mouse

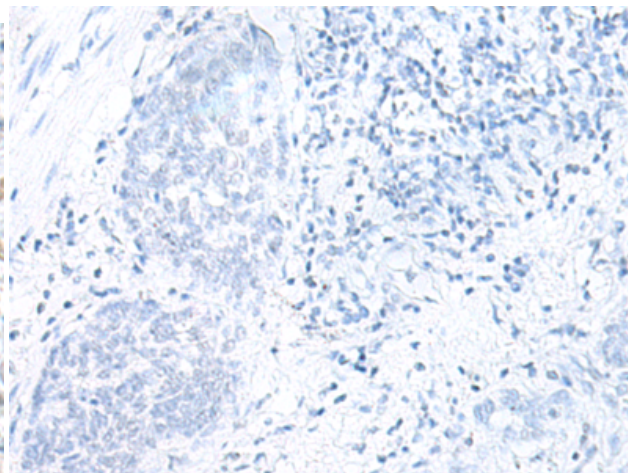
Constituents: PBS (without Mg²⁺ and Ca²⁺), pH 7.4, 150 mM NaCl, 0.05% Sodium Azide and 40% glycerol

Research Areas: Epigenetics and Nuclear Signaling, Cardiovascular

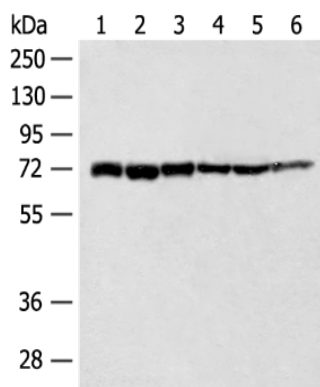
Storage & Shipping: Store at -20°C. Avoid repeated freezing and thawing



Immunohistochemistry analysis of paraffin embedded Human esophagus cancer tissue using 218767(TCF25 Antibody) at a dilution of 1/35(Nucleus).



In comparison with the IHC on the left, the same paraffin-embedded Human esophagus cancer tissue is first treated with the fusion protein and then with 218767(Anti-TCF25 Antibody) at dilution 1/35.



Gel: 8%SDS-PAGE, Lysate: 40 μ g;
Lane 1-6: K562 cell, 293T cell, Human fetal brain tissue, Jurkat cell, Hela cell, Mouse heart tissue lysates;
Primary antibody: 218767(TCF25 Antibody) at dilution 1/250;
Secondary antibody: Goat anti rabbit IgG at 1/8000 dilution;
Exposure time: 5 seconds