

## TCP 1 ALPHA RABBIT MAB

**Cat.#:** N263572

**Product Name:** Anti-TCP 1 alpha Rabbit Monoclonal Antibody

**Synonyms:** TCPI; CCT1; CCTA; T-complex protein 1 subunit alpha; TCP-1-alpha; CCT-alpha

**UNIPROT ID:** P17987

**Background:** Molecular chaperone; assists the folding of proteins upon ATP hydrolysis. As part of the BBS/CCT complex may play a role in the assembly of BBSome, a complex involved in ciliogenesis regulating transports vesicles to the cilia. Known to play a role, in vitro, in the folding of actin and tubulin.

**Immunogen:** A synthetic peptide of human TCPI alpha/CCTA

**Applications:** WB,IHC-F,IHC-P,ICC/IF,IP

**Recommended Dilutions:** WB: 1/500-1/1000 IHC: 1/50-1/100 IF: 1/50-1/200 IP: 1/20

**Host Species:** Rabbit

**Clonality:** Rabbit Monoclonal

**Clone ID:** R06-8G2

**MW:** Calculated MW: 60 kDa; Observed MW: 60 kDa

**Isotype:** IgG

**Purification:** Affinity Purified

**Species Reactivity:** Human,Hamster

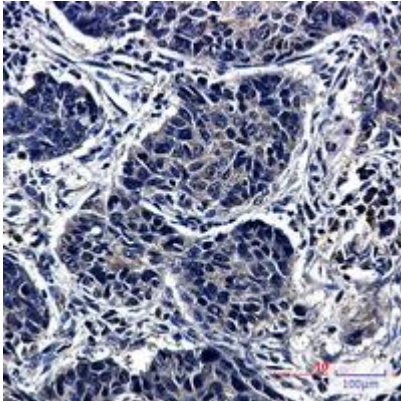
**Conjugation:** Unconjugated

**Modification:** Unmodified

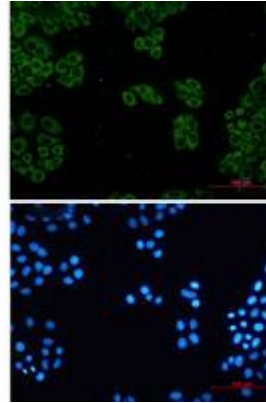
**Constituents:** PBS (without Mg<sup>2+</sup> and Ca<sup>2+</sup>), pH 7.3 containing 50% glycerol, 0.5% BSA and 0.02% sodium azide

**Research Areas:** Signal Transduction

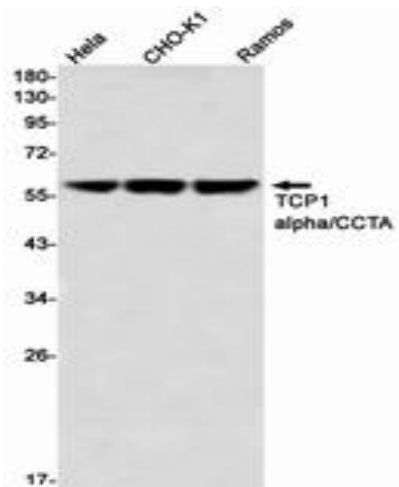
**Storage & Shipping:** Store at -20°C. Avoid repeated freezing and thawing



Immunohistochemistry analysis of paraffin-embedded Human lung cancer tissue using TCP1 alpha/CCTA antibody. High-pressure and temperature Sodium Citrate pH 6.0 was used for antigen retrieval.



Immunocytochemistry analysis of TCP 1 alpha (green) in HeLa using TCP 1 alpha antibody, and DAPI (blue).



Western blot analysis of TCP1 alpha/CCTA in HeLa, CHO-K1, Ramos lysates using TCP1 alpha/CCTA antibody.