

## TDP 43 RABBIT PAB

**Cat.#:** N225812

**Product Name:** Anti-TDP 43 Rabbit pAb

**Synonyms:** ALS10; TDP-43

**UNIPROT ID:** Q13148

**Background:** TDP43 (TAR DNA-binding protein 43) is involved in transcriptional regulation and exon splicing. While normal TDP43 is a nuclear protein, pathological TDP43 is a component of insoluble aggregates in patients with frontotemporal lobar degeneration (FTLD) and amyotrophic lateral sclerosis (ALS).

**Immunogen:** A synthesized peptide derived from human TDP43

**Applications:** WB,IHC-P,ICC/IF,IP,FC

**Recommended Dilutions:** WB: 1/500-1/1000 IHC: 1/50-1/100 IF: 1/50-1/200 IP: 1/20 FC: 1/50-1/100

**Host Species:** Rabbit

**Clonality:** Rabbit Polyclonal

**Clone ID:** -

**MW:** Calculated MW: 45 kDa; Observed MW: 45 kDa

**Isotype:** IgG

**Purification:** Affinity Chromatography

**Species Reactivity:** Human,Mouse,Rat,Zebrafish

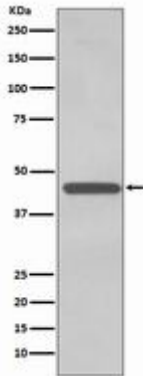
**Conjugation:** Unconjugated

**Modification:** Unmodified

**Constituents:** PBS (without Mg<sup>2+</sup> and Ca<sup>2+</sup>), pH 7.3 containing 50% glycerol, 0.5% BSA and 0.02% sodium azide

**Research Areas:** Microbiology

**Storage & Shipping:** Store at -20°C. Avoid repeated freezing and thawing



Western blot analysis of TDP43 in K562 lysates using TDP 43 antibody.