

## TDP2 RABBIT PAB

**Cat.#:** S220534

**Product Name:** Anti-TDP2 Rabbit Polyclonal Antibody

**Synonyms:** EAP2; AD022; EAPII; TTRAP; hTDP2; dJ30M3.3

**UNIPROT ID:** O95551 (Gene Accession - NP\_057698 )

**Background:** This gene encodes a member of a superfamily of divalent cation-dependent phosphodiesterases. The encoded protein associates with CD40, tumor necrosis factor (TNF) receptor-75 and TNF receptor associated factors (TRAFs), and inhibits nuclear factor-kappa-B activation. This protein has sequence and structural similarities with APE1 endonuclease, which is involved in both DNA repair and the activation of transcription factors.

**Immunogen:** Synthetic peptide of human TDP2

**Applications:** ELISA, WB, IHC

**Recommended Dilutions:** IHC: 50-300;WB: 500-2000;ELISA: 5000-10000

**Host Species:** Rabbit

**Clonality:** Rabbit Polyclonal

**Isotype:** Immunogen-specific rabbit IgG

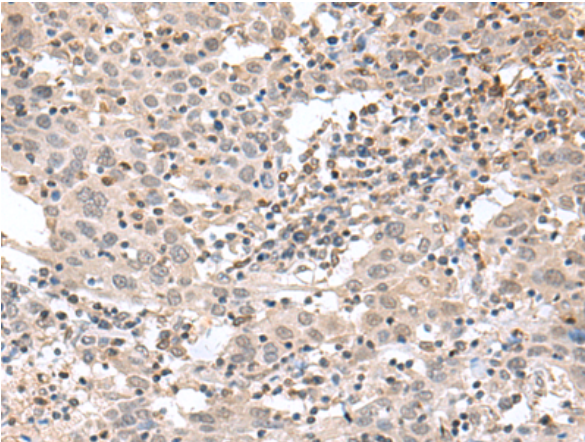
**Purification:** Antigen affinity purification

**Species Reactivity:** Human, Mouse

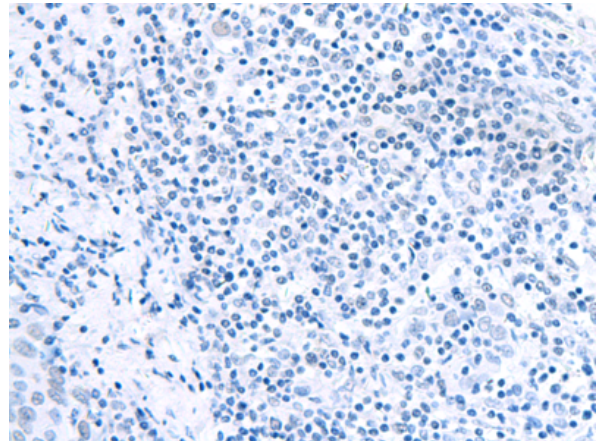
**Constituents:** PBS (without Mg<sup>2+</sup> and Ca<sup>2+</sup>), pH 7.4, 150 mM NaCl, 0.05% Sodium Azide and 40% glycerol

**Research Areas:** Epigenetics and Nuclear Signaling, Cancer

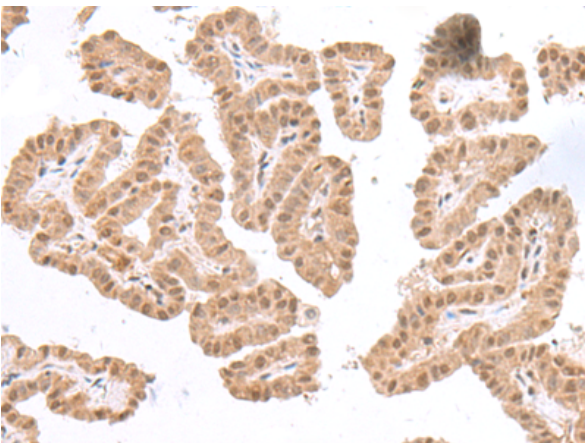
**Storage & Shipping:** Store at -20°C. Avoid repeated freezing and thawing



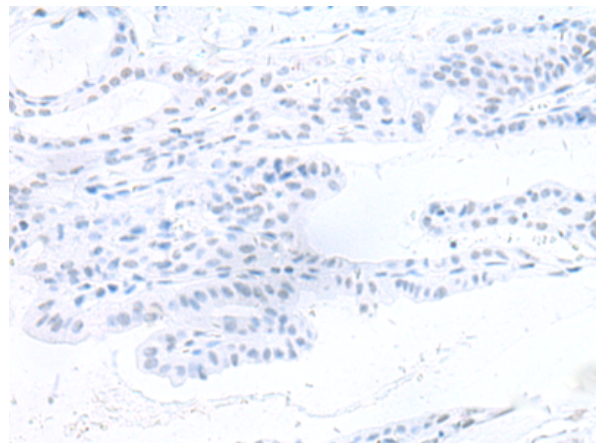
Immunohistochemistry analysis of paraffin embedded Human cervical cancer tissue using 220534(TDP2 Antibody) at a dilution of 1/75(Cytoplasm and Nucleus).



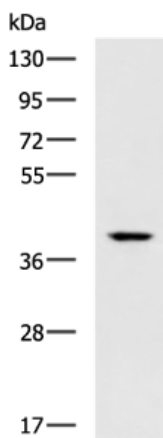
In comparison with the IHC on the left, the same paraffin-embedded Human cervical cancer tissue is first treated with the synthetic peptide and then with 220534(Anti-TDP2 Antibody) at dilution 1/75.



The image on the left is immunohistochemistry of paraffin-embedded Human thyroid cancer tissue using 220534(Anti-TDP2 Antibody) at a dilution of 1/75.



In comparison with the IHC on the left, the same paraffin-embedded Human thyroid cancer tissue is first treated with synthetic peptide and then with D261663(Anti-TDP2 Antibody) at dilution 1/75.



Gel: 8%SDS-PAGE, Lysate: 40 µg;  
Lane: Mouse small intestines tissue lysate;  
Primary antibody: 220534(TDP2 Antibody) at dilution 1/600;  
Secondary antibody: HRP-conjugated Goat anti rabbit IgG at 1/5000 dilution;  
Exposure time: 90 seconds



# Product Description

Pioneering GTPase and Oncogene Product Development since 2010

---