

## TDRD3 RABBIT PAB

**Cat.#:** S219512

**Product Name:** Anti-TDRD3 Rabbit Polyclonal Antibody

**Synonyms:**

**UNIPROT ID:** Q9H7E2 (Gene Accession - BC030514 )

**Background:** Scaffolding protein that specifically recognizes and binds dimethylarginine-containing proteins. In nucleus, acts as a coactivator: recognizes and binds asymmetric dimethylation on the core histone tails associated with transcriptional activation (H3R17me2a and H4R3me2a) and recruits proteins at these arginine-methylated loci. In cytoplasm, may play a role in the assembly and/or disassembly of mRNA stress granules and in the regulation of translation of target mRNAs by binding Arg/Gly-rich motifs (GAR) in dimethylarginine-containing proteins.

**Immunogen:** Fusion protein of human TDRD3

**Applications:** ELISA, WB, IHC

**Recommended Dilutions:** IHC: 200-300;WB: 500-2000;ELISA: 5000-10000

**Host Species:** Rabbit

**Clonality:** Rabbit Polyclonal

**Isotype:** Immunogen-specific rabbit IgG

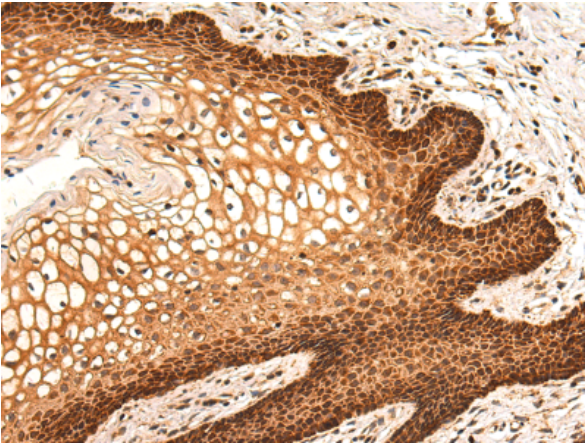
**Purification:** Antigen affinity purification

**Species Reactivity:** Human, Mouse, Rat

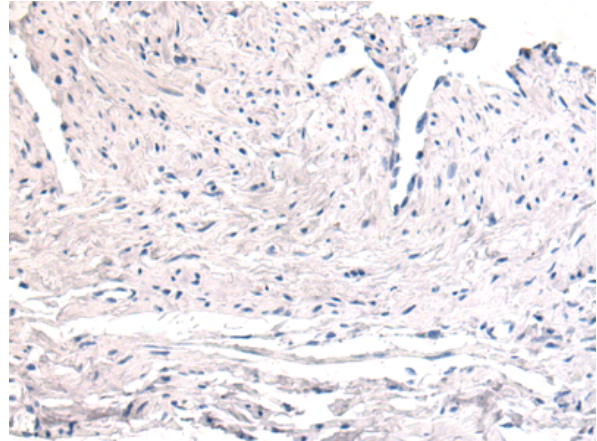
**Constituents:** PBS (without Mg<sup>2+</sup> and Ca<sup>2+</sup>), pH 7.4, 150 mM NaCl, 0.05% Sodium Azide and 40% glycerol

**Research Areas:** Epigenetics and Nuclear Signaling, Neuroscience

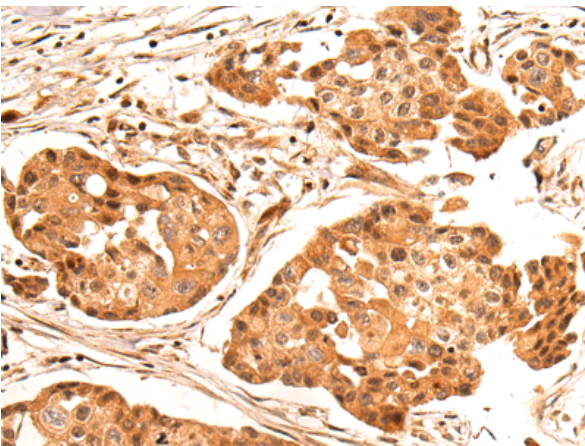
**Storage & Shipping:** Store at -20°C. Avoid repeated freezing and thawing



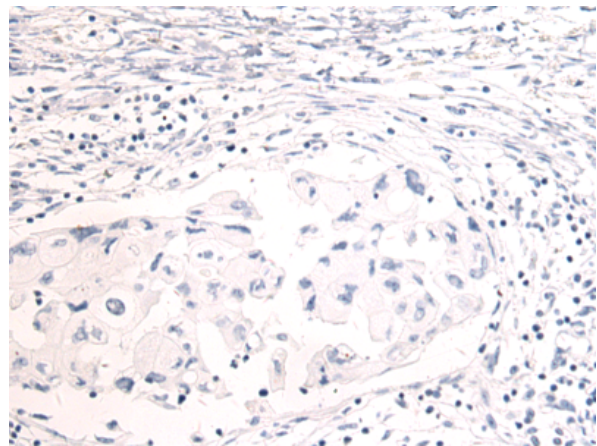
Immunohistochemistry analysis of paraffin embedded Human cervical cancer tissue using 219512(TDRD3 Antibody) at a dilution of 1/150(Nucleus and Cytoplasm).



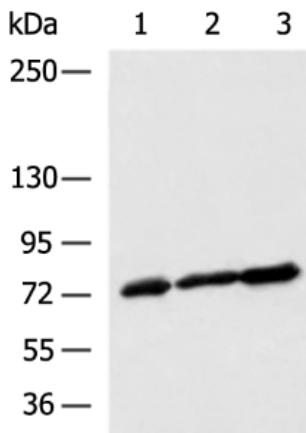
In comparison with the IHC on the left, the same paraffin-embedded Human cervical cancer tissue is first treated with the fusion protein and then with 219512(Anti-TDRD3 Antibody) at dilution 1/150.



The image on the left is immunohistochemistry of paraffin-embedded Human breast cancer tissue using 219512(Anti-TDRD3 Antibody) at a dilution of 1/150.



In comparison with the IHC on the left, the same paraffin-embedded Human breast cancer tissue is first treated with fusion protein and then with D227443(Anti-TDRD3 Antibody) at dilution 1/150.



Gel: 6%SDS-PAGE, Lysate: 40 µg;  
Lane 1-3: HUVEC, NIH/3T3, MCF-7 cell lysates;  
Primary antibody: 219512(TDRD3 Antibody) at dilution 1/700;  
Secondary antibody: HRP-conjugated Goat anti rabbit IgG at 1/5000 dilution;  
Exposure time: 30 seconds



# Product Description

Pioneering GTPase and Oncogene Product Development since 2010

---