

TDRD7 RABBIT PAB

Cat.#: S219542

Product Name: Anti-TDRD7 Rabbit Polyclonal Antibody

Synonyms: TRAP; CATC4; PCTAIRE2BP

UNIPROT ID: Q8NHU6 (Gene Accession - BC028694)

Background: The protein encoded by this gene belongs to the Tudor family of proteins. This protein contains conserved Tudor domains and LOTUS domains. It is a component of RNA granules, which function in RNA processing. Mutations in this gene have been associated with cataract formation in mouse and human. Alternative splicing results in multiple transcript variants.

Immunogen: Fusion protein of human TDRD7

Applications: ELISA, IHC

Recommended Dilutions: IHC: 50-200; ELISA: 5000-10000

Host Species: Rabbit

Clonality: Rabbit Polyclonal

Isotype: Immunogen-specific rabbit IgG

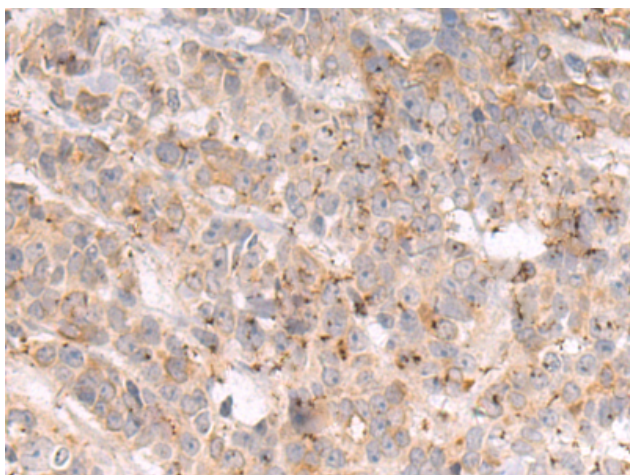
Purification: Antigen affinity purification

Species Reactivity: Human, Mouse, Rat

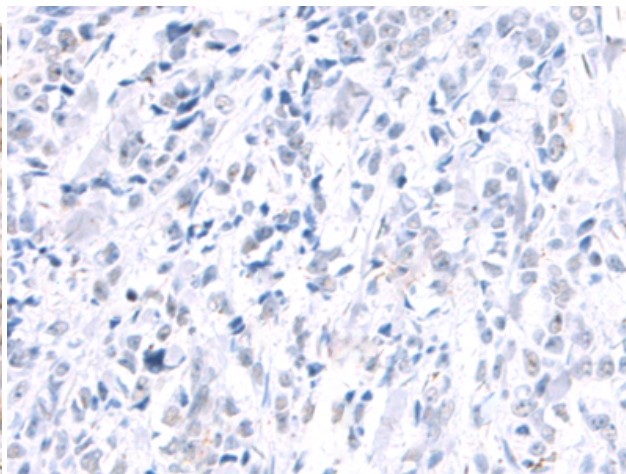
Constituents: PBS (without Mg²⁺ and Ca²⁺), pH 7.4, 150 mM NaCl, 0.05% Sodium Azide and 40% glycerol

Research Areas: Epigenetics and Nuclear Signaling

Storage & Shipping: Store at -20°C. Avoid repeated freezing and thawing



Immunohistochemistry analysis of paraffin embedded Human breast cancer tissue using 219542(TDRD7 Antibody) at a dilution of 1/50(Cytoplasm).



In comparison with the IHC on the left, the same paraffin-embedded Human breast cancer tissue is first treated with the fusion protein and then with 219542(Anti-TDRD7 Antibody) at dilution 1/50.