

## TEKT1 RABBIT PAB

**Cat.#:** S210635

**Product Name:** Anti-TEKT1 Rabbit Polyclonal Antibody

**Synonyms:**

**UNIPROT ID:** Q969V4 (Gene Accession - BC014599 )

**Background:** This gene product belongs to the tektin family of proteins. Tektins comprise a family of filament-forming proteins that are coassembled with tubulins to form ciliary and flagellar microtubules. This gene is predominantly expressed in the testis and in mouse, tektin 1 mRNA was localized to the spermatocytes and round spermatids in the seminiferous tubules, indicating that it may play a role in spermatogenesis.

**Immunogen:** Fusion protein of human TEKT1

**Applications:** ELISA, WB, IHC

**Recommended Dilutions:** IHC: 50-200;WB: 500-2000;ELISA: 2000-5000

**Host Species:** Rabbit

**Clonality:** Rabbit Polyclonal

**Isotype:** Immunogen-specific rabbit IgG

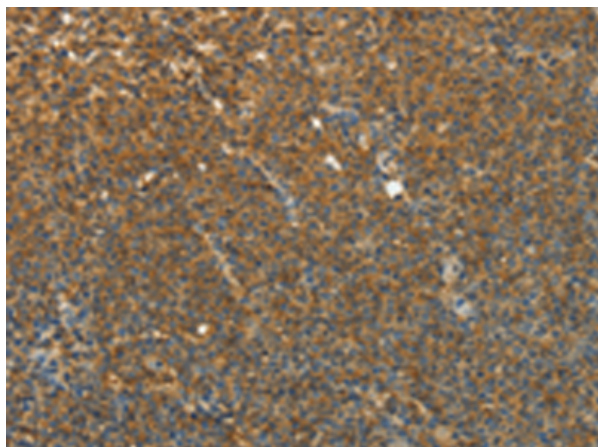
**Purification:** Antigen affinity purification

**Species Reactivity:** Human, Mouse, Rat

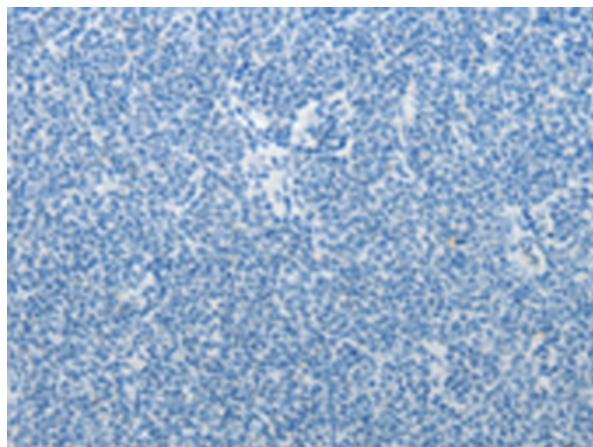
**Constituents:** PBS (without Mg<sup>2+</sup> and Ca<sup>2+</sup>), pH 7.4, 150 mM NaCl, 0.05% Sodium Azide and 40% glycerol

**Research Areas:** Signal Transduction

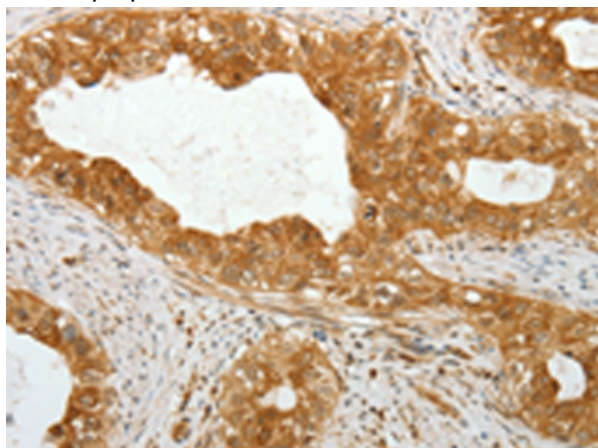
**Storage & Shipping:** Store at -20°C. Avoid repeated freezing and thawing



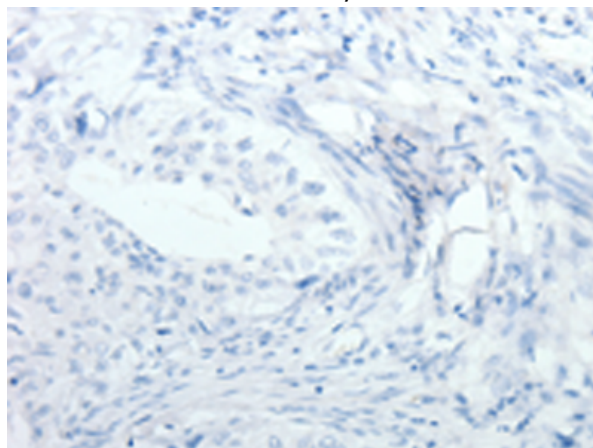
Immunohistochemistry analysis of paraffin embedded Human lymphoma tissue using 210635(TEKTI Antibody) at a dilution of 1/30(Cytoplasm ).



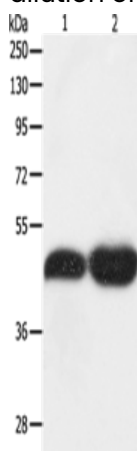
In comparison with the IHC on the left, the same paraffin-embedded Human lymphoma tissue is first treated with the fusion protein and then with 210635(Anti-TEKTI Antibody) at dilution 1/30.



The image on the left is immunohistochemistry of paraffin-embedded Human cervical cancer tissue using 210635(Anti-TEKTI Antibody) at a dilution of 1/30.



In comparison with the IHC on the left, the same paraffin-embedded Human cervical cancer tissue is first treated with fusion protein and then with D121334(Anti-TEKTI Antibody) at dilution 1/30.



Gel: 10%SDS-PAGE, Lysate: 40 µg;  
 Lane 1-2: NIH/3T3 cells, Lncap cells;  
 Primary antibody: 210635(TEKTI Antibody) at dilution 1/500;  
 Secondary antibody: Goat anti rabbit IgG at 1/8000 dilution;  
 Exposure time: 10 minutes



# Product Description

Pioneering GTPase and Oncogene Product Development since 2010

---