

TENM3 RABBIT PAB

Cat.#: S220225

Product Name: Anti-TENM3 Rabbit Polyclonal Antibody

Synonyms: ODZ3; TNM3; Ten-m3

UNIPROT ID: Q9P273 (Gene Accession - NP_001073946)

Background: This protein involved in neural development, regulating the establishment of proper connectivity within the nervous system. It promotes axon guidance and homophilic cell adhesion and it plays a role in the development of the visual pathway; regulates the formation in ipsilateral retinal mapping to both the dorsal lateral geniculate nucleus (dLGN) and the superior colliculus (SC). May be involved in the differentiation of the fibroblast-like cells in the superficial layer of mandibular condylar cartilage into chondrocytes.

Immunogen: Synthetic peptide of human TENM3

Applications: ELISA, IHC

Recommended Dilutions: IHC: 50-200; ELISA: 3000-10000

Host Species: Rabbit

Clonality: Rabbit Polyclonal

Isotype: Immunogen-specific rabbit IgG

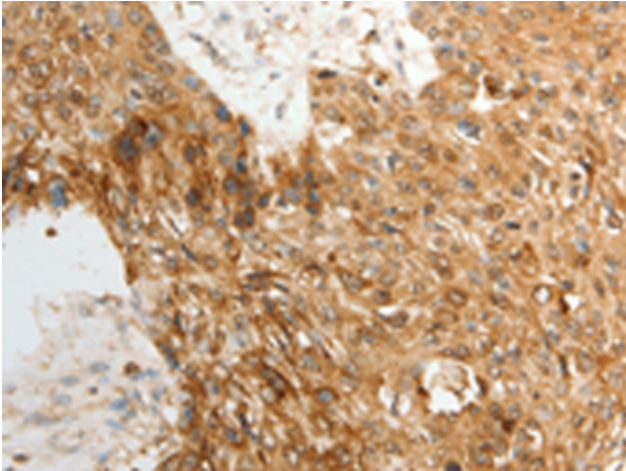
Purification: Antigen affinity purification

Species Reactivity: Human, Mouse

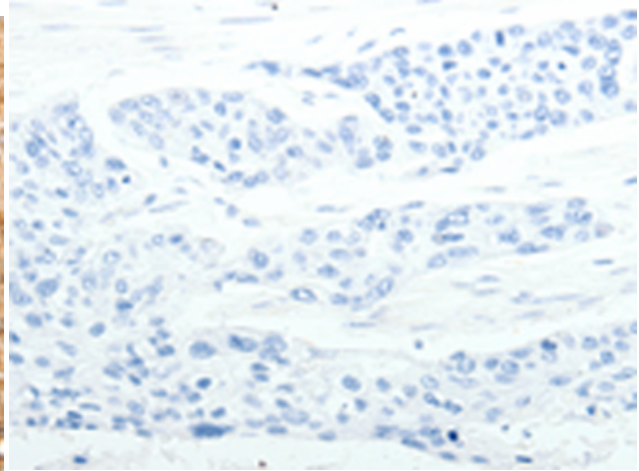
Constituents: PBS (without Mg²⁺ and Ca²⁺), pH 7.4, 150 mM NaCl, 0.05% Sodium Azide and 40% glycerol

Research Areas: Neuroscience

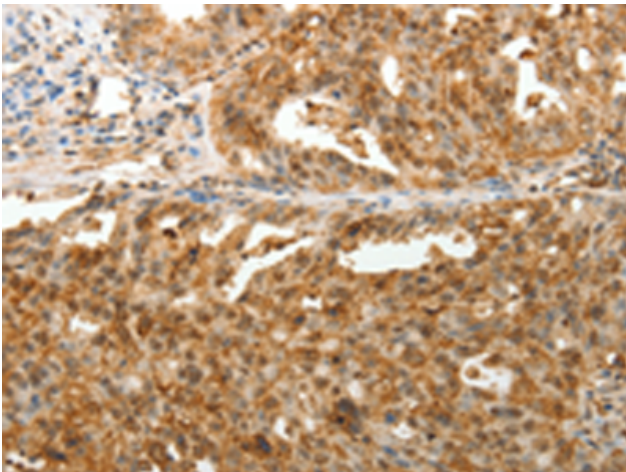
Storage & Shipping: Store at -20°C. Avoid repeated freezing and thawing



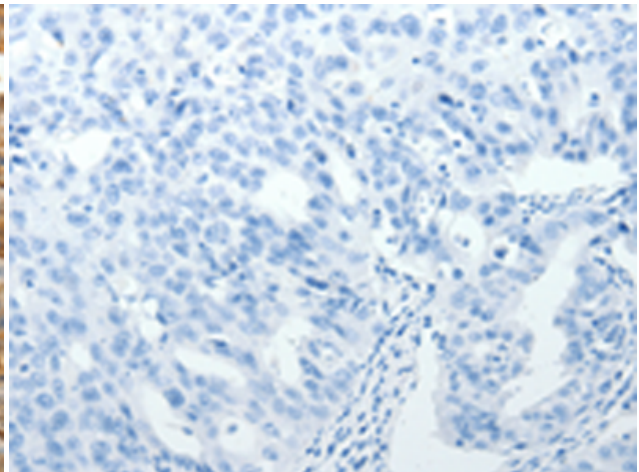
Immunohistochemistry analysis of paraffin embedded Human esophagus cancer tissue using 220225 (TENM3 Antibody) at a dilution of 1/50 (Nucleus, Cytoplasm).



In comparison with the IHC on the left, the same paraffin-embedded Human esophagus cancer tissue is first treated with the synthetic peptide and then with 220225 (Anti-TENM3 Antibody) at dilution 1/50.



The image on the left is immunohistochemistry of paraffin-embedded Human ovarian cancer tissue using 220225 (Anti-TENM3 Antibody) at a dilution of 1/50.



In comparison with the IHC on the left, the same paraffin-embedded Human ovarian cancer tissue is first treated with synthetic peptide and then with D261166 (Anti-TENM3 Antibody) at dilution 1/50.