

TERT RABBIT PAB

Cat.#: S219857

Product Name: Anti-TERT Rabbit Polyclonal Antibody

Synonyms: TP2; TRT; CMM9; EST2; TCS1; hTRT; DKCA2; DKCB4; hEST2; PFBMFT1

UNIPROT ID: O14746 (Gene Accession - NP_937983)

Background: Telomerase is a ribonucleoprotein polymerase that maintains telomere ends by addition of the telomere repeat TTAGGG. The enzyme consists of a protein component with reverse transcriptase activity, encoded by this gene, and an RNA component which serves as a template for the telomere repeat. Telomerase expression plays a role in cellular senescence, as it is normally repressed in postnatal somatic cells resulting in progressive shortening of telomeres. Deregulation of telomerase expression in somatic cells may be involved in oncogenesis. Studies in mouse suggest that telomerase also participates in chromosomal repair, since de novo synthesis of telomere repeats may occur at double-stranded breaks. Alternatively spliced variants encoding different isoforms of telomerase reverse transcriptase have been identified; the full-length sequence of some variants has not been determined. Alternative splicing at this locus is thought to be one mechanism of regulation of telomerase activity.

Immunogen: Synthetic peptide of human TERT

Applications: ELISA, WB, IHC

Recommended Dilutions: IHC: 100-300;WB: 500-2000;ELISA: 5000-10000

Host Species: Rabbit

Clonality: Rabbit Polyclonal

Isotype: Immunogen-specific rabbit IgG

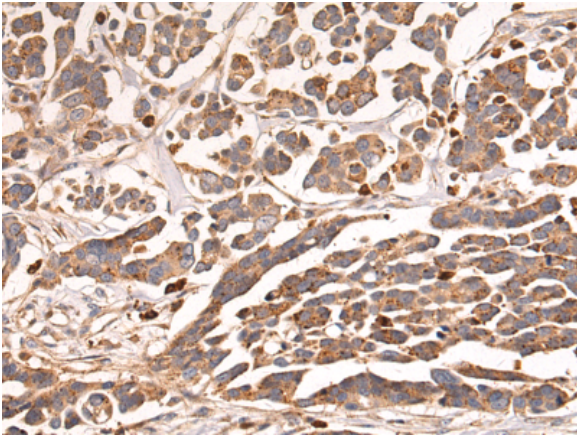
Purification: Antigen affinity purification

Species Reactivity: Human

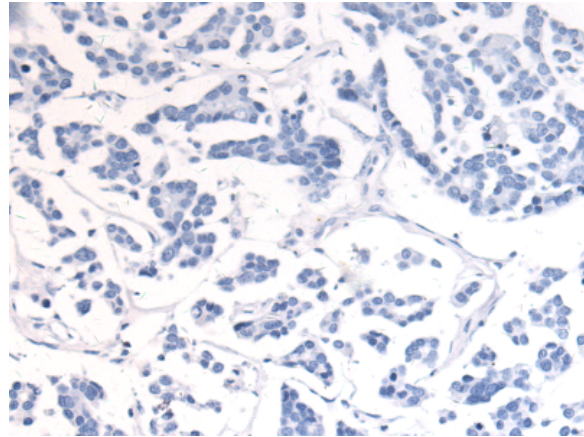
Constituents: PBS (without Mg²⁺ and Ca²⁺), pH 7.4, 150 mM NaCl, 0.05% Sodium Azide and 40% glycerol

Research Areas: Epigenetics and Nuclear Signaling, Cancer, Stem Cells, Developmental Biology

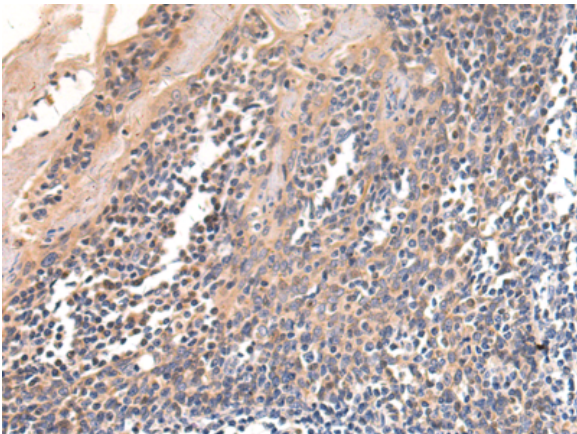
Storage & Shipping: Store at -20°C. Avoid repeated freezing and thawing



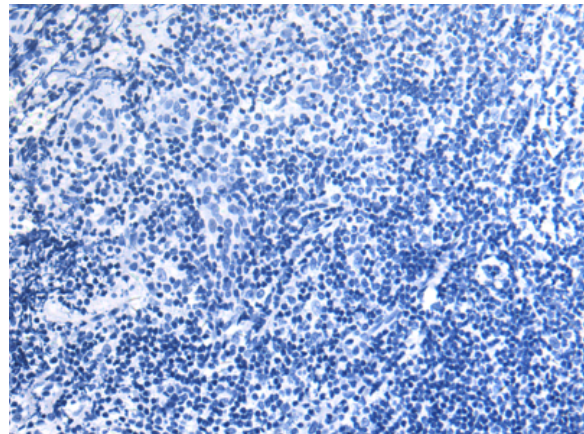
Immunohistochemistry analysis of paraffin embedded Human colorectal cancer tissue using 219857(TERT Antibody) at a dilution of 1/70(Nucleus and Cytoplasm).



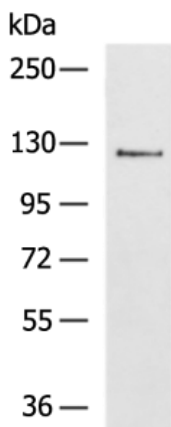
In comparison with the IHC on the left, the same paraffin-embedded Human colorectal cancer tissue is first treated with the synthetic peptide and then with 219857(Anti-TERT Antibody) at dilution 1/70.



The image on the left is immunohistochemistry of paraffin-embedded Human tonsil tissue using 219857(Anti-TERT Antibody) at a dilution of 1/70.



In comparison with the IHC on the left, the same paraffin-embedded Human tonsil tissue is first treated with synthetic peptide and then with D260502(Anti-TERT Antibody) at dilution 1/70.



Gel: 6%SDS-PAGE, Lysate: 40 µg;
Lane: Human mucinous type of soft tissue sarcoma tissue lysate;
Primary antibody: 219857(TERT Antibody) at dilution 1/700;
Secondary antibody: HRP-conjugated Goat anti rabbit IgG at 1/5000 dilution;
Exposure time: 90 seconds



Product Description

Pioneering GTPase and Oncogene Product Development since 2010
