

## TETRANECTIN RABBIT MAB

**Cat.#:** N262988

**Product Name:** Anti-Tetranectin Rabbit Monoclonal Antibody

**Synonyms:** Clec3b; Tetranectin; TN; TNA

**UNIPROT ID:** P05452

**Background:** Tetranectin binds to plasminogen and to isolated kringle 4. May be involved in the packaging of molecules destined for exocytosis.

**Immunogen:** A synthetic peptide of human Tetranectin

**Applications:** WB,IHC-P,IP

**Recommended Dilutions:** WB: 1/500-1/1000 IHC: 1/50-1/100 IP: 1/20

**Host Species:** Rabbit

**Clonality:** Rabbit Monoclonal

**Clone ID:** R08-412

**MW:** Calculated MW: 23 kDa; Observed MW: 23 kDa

**Isotype:** IgG

**Purification:** Affinity Purified

**Species Reactivity:** Human,Mouse

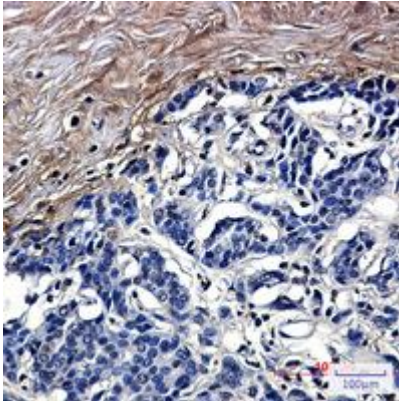
**Conjugation:** Unconjugated

**Modification:** Unmodified

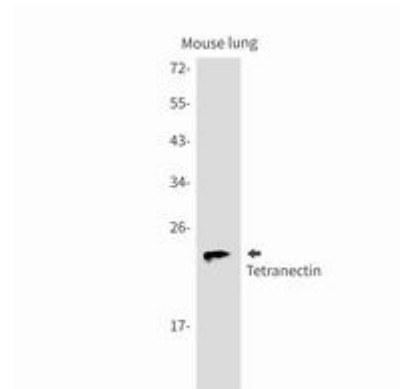
**Constituents:** PBS (without Mg<sup>2+</sup> and Ca<sup>2+</sup>), pH 7.3 containing 50% glycerol, 0.5% BSA and 0.02% sodium azide

**Research Areas:** Cardiovascular

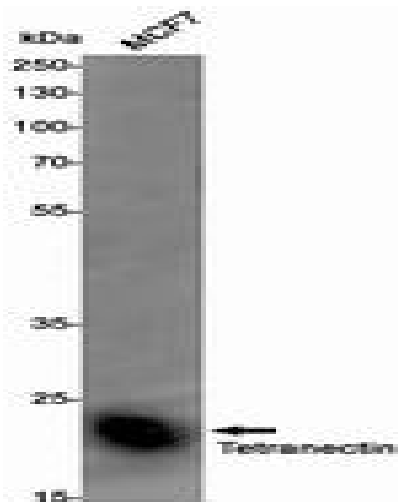
**Storage & Shipping:** Store at -20°C. Avoid repeated freezing and thawing



Immunohistochemistry analysis of paraffin-embedded Human breast cancer using Tetraneectin antibody. High-pressure and temperature Sodium Citrate pH 6.0 was used for antigen retrieval.



Western blot analysis of Tetraneectin in mouse lung lysates using Tetraneectin antibody.



Western blot analysis of Tetraneectin in MCF-7 lysates using Tetraneectin antibody.