

## TFDP2 RABBIT PAB

**Cat.#:** S217889

**Product Name:** Anti-TFDP2 Rabbit Polyclonal Antibody

**Synonyms:** DP2

**UNIPROT ID:** Q14188 (Gene Accession - BC021113 )

**Background:** The gene is a member of the transcription factor DP family. The encoded protein forms heterodimers with the E2F transcription factors resulting in transcriptional activation of cell cycle regulated genes. Alternative splicing results in multiple transcript variants.

**Immunogen:** Full length fusion protein

**Applications:** ELISA, IHC

**Recommended Dilutions:** IHC: 25-100; ELISA: 2000-5000

**Host Species:** Rabbit

**Clonality:** Rabbit Polyclonal

**Isotype:** Immunogen-specific rabbit IgG

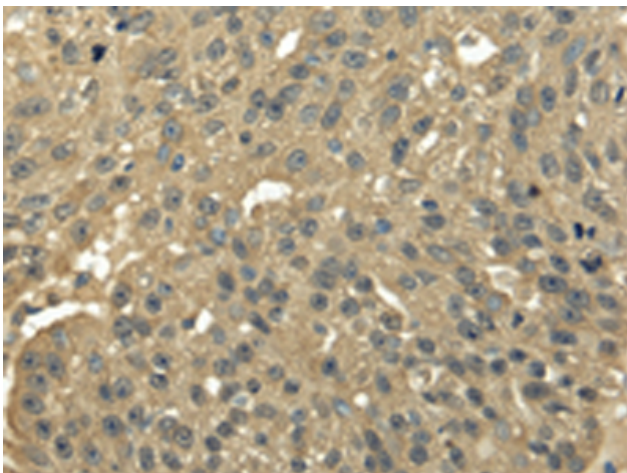
**Purification:** Antigen affinity purification

**Species Reactivity:** Human, Mouse

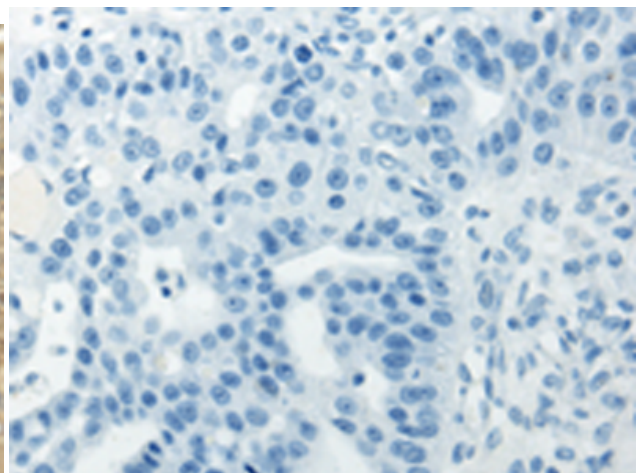
**Constituents:** PBS (without Mg<sup>2+</sup> and Ca<sup>2+</sup>), pH 7.4, 150 mM NaCl, 0.05% Sodium Azide and 40% glycerol

**Research Areas:** Epigenetics and Nuclear Signaling, Cancer

**Storage & Shipping:** Store at -20°C. Avoid repeated freezing and thawing



Immunohistochemistry analysis of paraffin embedded Human breast cancer tissue using 217889(TFDP2 Antibody) at a dilution of 1/25(Nucleus).



In comparison with the IHC on the left, the same paraffin-embedded Human breast cancer tissue is first treated with the fusion protein and then with 217889(Anti-TFDP2 Antibody) at dilution 1/25.