

## TGF ALPHA RABBIT PAB

**Cat.#:** N225944

**Product Name:** Anti-TGF alpha Rabbit pAb

**Synonyms:** ETGF; TFGA; TGF A; TGF-alpha; Tgfa; Wa1; Waved 1

**UNIPROT ID:** P01135

**Background:** TGF alpha is a mitogenic polypeptide that is able to bind to the EGF receptor and to act synergistically with TGF beta to promote anchorage-independent cell proliferation in soft agar.

**Immunogen:** A synthesized peptide derived from human TGF alpha

**Applications:** WB,IHC-P,ICC/IF,IP

**Recommended Dilutions:** WB: 1/500-1/1000 IHC: 1/50-1/100 IF: 1/50-1/200 IP: 1/20

**Host Species:** Rabbit

**Clonality:** Rabbit Polyclonal

**Clone ID:** -

**MW:** Calculated MW: 17 kDa; Observed MW: 17 kDa

**Isotype:** IgG

**Purification:** Affinity Chromatography

**Species Reactivity:** Human

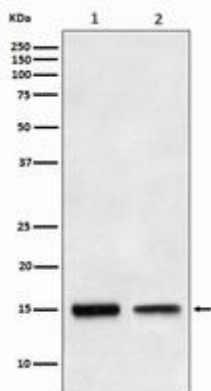
**Conjugation:** Unconjugated

**Modification:** Unmodified

**Constituents:** PBS (without Mg<sup>2+</sup> and Ca<sup>2+</sup>), pH 7.3 containing 50% glycerol, 0.5% BSA and 0.02% sodium azide

**Research Areas:** Cardiovascular

**Storage & Shipping:** Store at -20°C. Avoid repeated freezing and thawing



Western blot analysis of TGF alpha in (1) HepG2 lysates; (2) Human fetal liver lysates using TGF alpha antibody.



# Product Description

Pioneering GTPase and Oncogene Product Development since 2010

---