

## TGF BETA 1 (8F6) MOUSE MAB

**Cat.#:** N261339

**Product Name:** Anti-TGF beta 1 (8F6) Mouse Monoclonal Antibody

**Synonyms:** TGF beta 1; TGFB; CED; LAP

**UNIPROT ID:** P01137

**Background:** Multifunctional protein that controls proliferation, differentiation and other functions in many cell types. Many cells synthesize TGFB1 and have specific receptors for it. It positively and negatively regulates many other growth factors. It plays an important role in bone remodeling as it is a potent stimulator of osteoblastic bone formation, causing chemotaxis, proliferation and differentiation in committed osteoblasts.

**Immunogen:** Synthetic peptide conjugated to KLH.

**Applications:** WB,IHC-P

**Recommended Dilutions:** WB: 1/500-1/1000 IHC: 1/50-1/100

**Host Species:** Mouse

**Clonality:** Mouse Monoclonal

**Clone ID:** 8F6-3G10-4G9

**MW:** Calculated MW: 44 kDa; Observed MW: 12,25,45-65 kDa

**Isotype:** IgG1

**Purification:** Affinity Purified

**Species Reactivity:** Human,Rat,Mouse

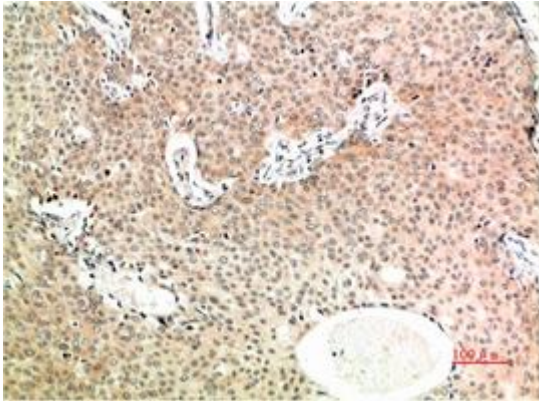
**Conjugation:** Unconjugated

**Modification:** Unmodified

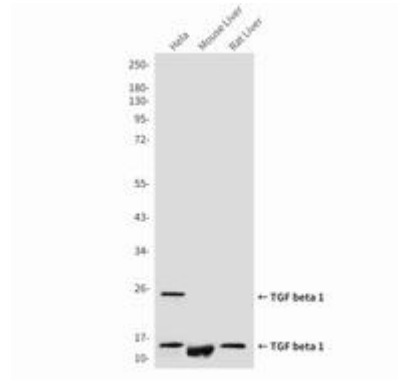
**Constituents:** PBS (without Mg<sup>2+</sup> and Ca<sup>2+</sup>), pH 7.3 containing 50% glycerol, 0.5% BSA and 0.02% sodium azide

**Research Areas:** Cardiovascular

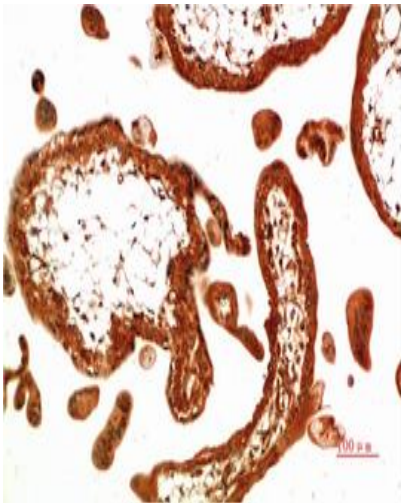
**Storage & Shipping:** Store at -20°C. Avoid repeated freezing and thawing



Immunohistochemistry analysis of paraffin-embedded Human Breast Carcinoma Tissue using TGF beta 1 (8F6) antibody. High-pressure and temperature Sodium Citrate pH 6.0 was used for antigen retrieval.



Western blot analysis of TGF beta 1 (8F6) in Hela lysates, mouse Liver lysates, rat Liver lysates using TGF&beta 1 antibody.



Immunohistochemistry analysis of paraffin-embedded Human Placental Tissue using TGF beta 1 (8F6) antibody. High-pressure and temperature Sodium Citrate pH 6.0 was used for antigen retrieval.