

TGF BETA 1 RABBIT PAB

Cat.#: N225468

Product Name: Anti-TGF beta 1 Rabbit pAb

Synonyms: TGF beta 1; TGFB; CED; LAP

UNIPROT ID: P01137

Background: Multifunctional protein that controls proliferation, differentiation and other functions in many cell types. Many cells synthesize TGFB1 and have specific receptors for it. It positively and negatively regulates many other growth factors. It plays an important role in bone remodeling as it is a potent stimulator of osteoblastic bone formation, causing chemotaxis, proliferation and differentiation in committed osteoblasts.

Immunogen: The antiserum was produced against synthesized peptide derived from human TGF beta1. AA range:336-385

Applications: WB,IHC-F,IHC-P,ICC/IF,ELISA

Recommended Dilutions: WB: 1/500-1/1000 IHC: 1/50-1/100 IF: 1/50-1/200
ELISA: 1/10000

Host Species: Rabbit

Clonality: Rabbit Polyclonal

Clone ID: -

MW: Calculated MW: 44 kDa; Observed MW: 44 kDa

Isotype: IgG

Purification: Affinity Purified

Species Reactivity: Human,Mouse,Rat

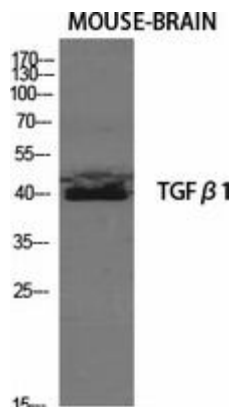
Conjugation: Unconjugated

Modification: Unmodified

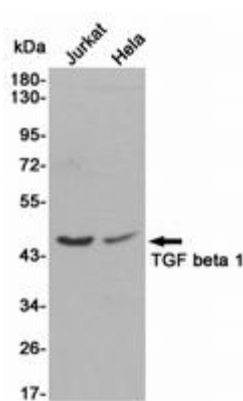
Constituents: PBS (without Mg²⁺ and Ca²⁺), pH 7.3 containing 50% glycerol, 0.5% BSA and 0.02% sodium azide

Research Areas: Cardiovascular

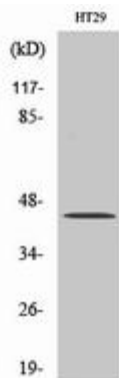
Storage & Shipping: Store at -20°C. Avoid repeated freezing and thawing



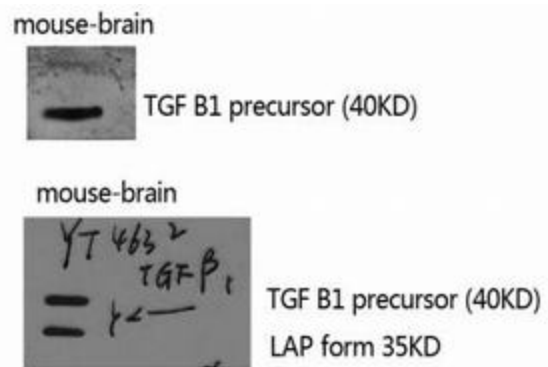
Western blot analysis of TGF beta 1 in mouse brain lysates using TGFu3b21 antibody



Western blot analysis of TGF beta 1 in Jurkat and Hela lysates using TGF beta 1 antibody.



Western blot analysis of TGF beta 1 in MCF-7 lysates using TGFbeta1 antibody.



Western blot analysis of TGF beta 1 in mouse brain lysates using TGF beta 1 antibody