

TGF BETA 2 RABBIT PAB

Cat.#: N225021

Product Name: Anti-TGF beta 2 Rabbit pAb

Synonyms: Transforming growth factor beta-2; TGF-beta-2; BSC-1 cell growth inhibitor; Cetermin; Glioblastoma-derived T-cell suppressor factor; G-TSF; Polyergin

UNIPROT ID: P61812

Background: Transforming growth factor beta-2 proprotein: Precursor of the Latency-associated peptide (LAP) and Transforming growth factor beta-2 (TGF-beta-2) chains, which constitute the regulatory and active subunit of TGF-beta-2, respectively.

Immunogen: Synthetic peptide from human protein at AA range: 61-110

Applications: WB,IHC-P,ELISA

Recommended Dilutions: WB: 1/500-1/1000 IHC: 1/50-1/100 ELISA: 1/10000

Host Species: Rabbit

Clonality: Rabbit Polyclonal

Clone ID: -

MW: Calculated MW: 48 kDa; Observed MW: 47,12 kDa

Isotype: IgG

Purification: Affinity Purified

Species Reactivity: Human,Mouse,Rat

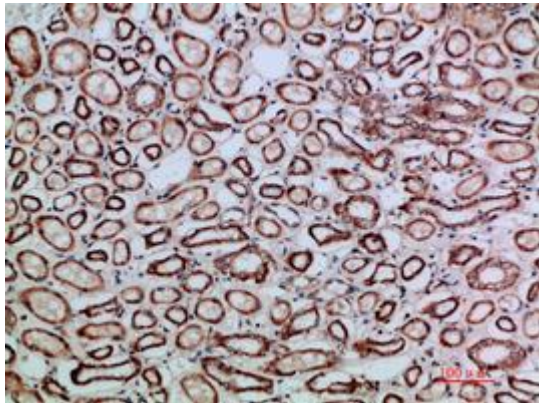
Conjugation: Unconjugated

Modification: Unmodified

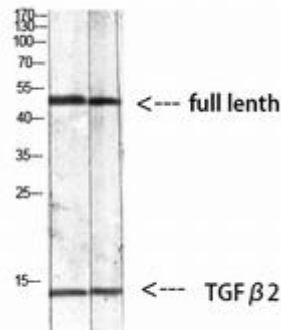
Constituents: PBS (without Mg²⁺ and Ca²⁺), pH 7.3 containing 50% glycerol, 0.5% BSA and 0.02% sodium azide

Research Areas: Signal Transduction

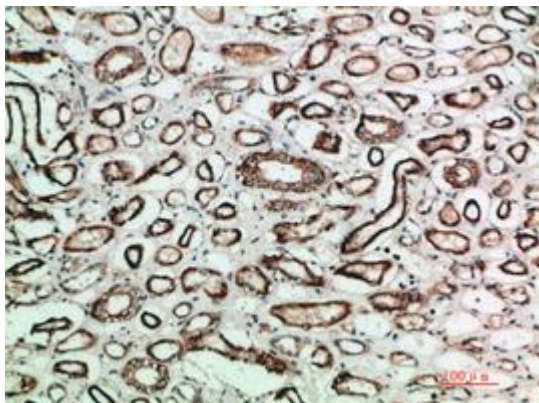
Storage & Shipping: Store at -20°C. Avoid repeated freezing and thawing



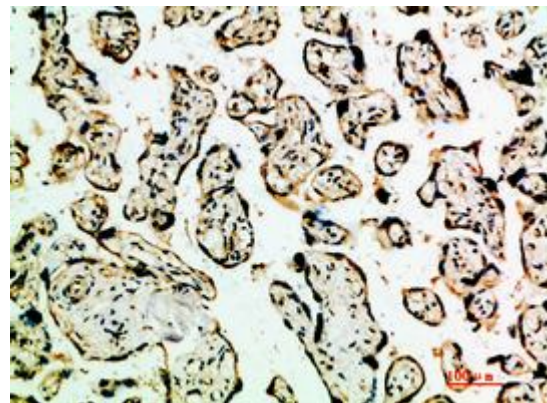
Immunohistochemistry analysis of paraffin-embedded Human kidney using TGF beta 2 antibody. High-pressure and temperature Sodium Citrate pH 6.0 was used for antigen retrieval.



Western blot analysis of TGF beta 2 in mouse kidney, 293T, mouse lung lysates using TGF beta 2 antibody.



Immunohistochemistry analysis of paraffin-embedded Human kidney using TGF beta 2 antibody. High-pressure and temperature Sodium Citrate pH 6.0 was used for antigen retrieval.



Immunohistochemistry analysis of paraffin-embedded Human placenta using TGF beta 2 antibody. High-pressure and temperature Sodium Citrate pH 6.0 was used for antigen retrieval.