

TGIF2LX RABBIT PAB

Cat.#: S216231

Product Name: Anti-TGIF2LX Rabbit Polyclonal Antibody

Synonyms: TGIFLX

UNIPROT ID: Q8IU01 (Gene Accession - BC117398)

Background: This gene encodes a member of the TALE/TGIF homeobox family of transcription factors. Testis-specific expression suggests that this gene may play a role in spermatogenesis. A homolog of this gene lies within the male specific region of chromosome Y, in a block of sequence that is thought to be the result of a large X-to-Y transposition.

Immunogen: Fusion protein of human TGIF2LX

Applications: ELISA, IHC

Recommended Dilutions: IHC: 25-100; ELISA: 500-5000

Host Species: Rabbit

Clonality: Rabbit Polyclonal

Isotype: Immunogen-specific rabbit IgG

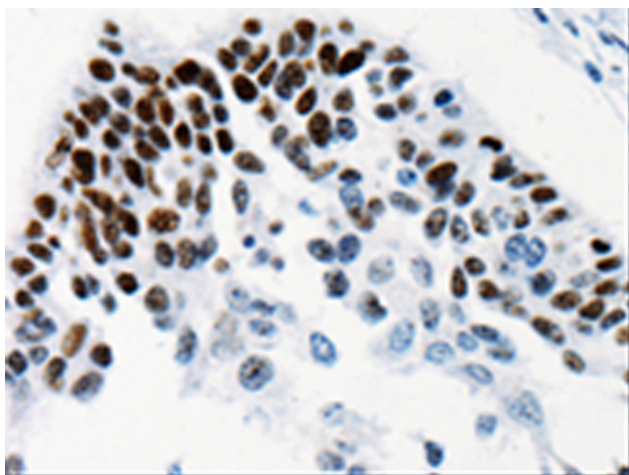
Purification: Antigen affinity purification

Species Reactivity: Human

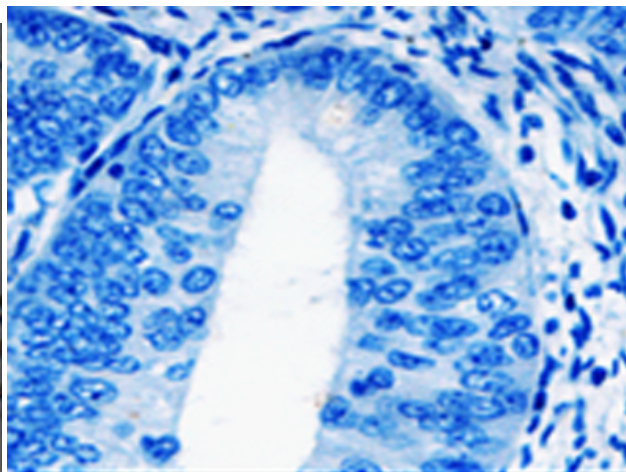
Constituents: PBS (without Mg²⁺ and Ca²⁺), pH 7.4, 150 mM NaCl, 0.05% Sodium Azide and 40% glycerol

Research Areas: Epigenetics and Nuclear Signaling

Storage & Shipping: Store at -20°C. Avoid repeated freezing and thawing



Immunohistochemistry analysis of paraffin embedded Human cervical cancer tissue using 216231(TGIF2LX Antibody) at a dilution of 1/25(Nucleus).



In comparison with the IHC on the left, the same paraffin-embedded Human cervical cancer tissue is first treated with the fusion protein and then with 216231(Anti-TGIF2LX Antibody) at dilution 1/25.