

TGM2 RABBIT PAB

Cat.#: S216833

Product Name: Anti-TGM2 Rabbit Polyclonal Antibody

Synonyms: transglutaminase 2

UNIPROT ID: TGC; tTG; G(h); hTG2; TG(C) (Gene Accession - P21980)

Background: BC003551

Immunogen: Fusion protein of human TGM2

Applications: ELISA, WB, IHC

Recommended Dilutions: IHC: 25-100;WB: 200-1000;ELISA: 1000-2000

Host Species: Rabbit

Clonality: Rabbit Polyclonal

Isotype: Immunogen-specific rabbit IgG

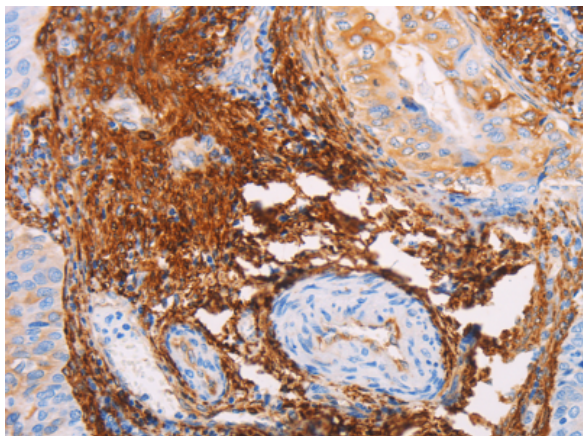
Purification: Antigen affinity purification

Species Reactivity: Human, Mouse

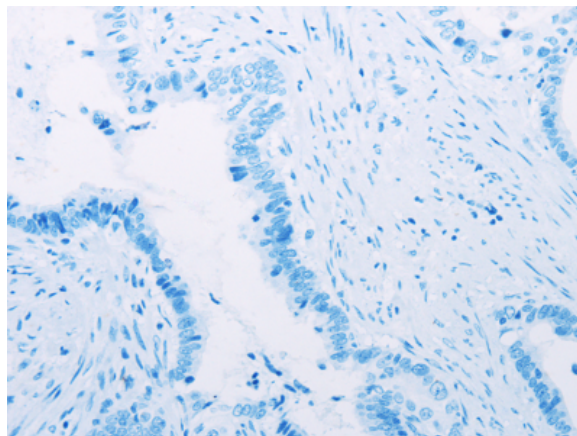
Constituents: PBS (without Mg²⁺ and Ca²⁺), pH 7.4, 150 mM NaCl, 0.05% Sodium Azide and 40% glycerol

Research Areas: Metabolism, Signal Transduction, Cancer, Immunology

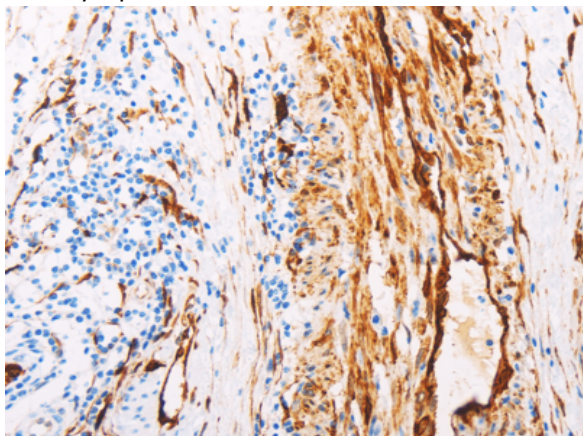
Storage & Shipping: Store at -20°C. Avoid repeated freezing and thawing



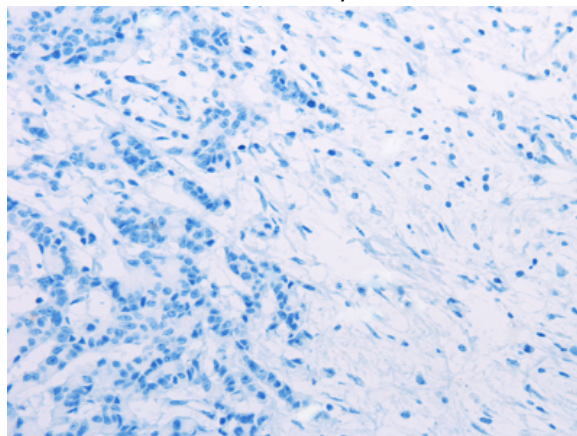
Immunohistochemistry analysis of paraffin embedded Human cervical cancer tissue using 216833(TGM2 Antibody) at a dilution of 1/15(Cytoplasm).



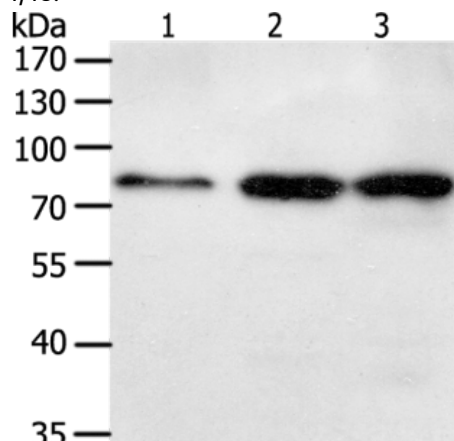
In comparison with the IHC on the left, the same paraffin-embedded Human cervical cancer tissue is first treated with the fusion protein and then with 216833(Anti-TGM2 Antibody) at dilution 1/15.



The image on the left is immunohistochemistry of paraffin-embedded Human colon cancer tissue using 216833(Anti-TGM2 Antibody) at a dilution of 1/15.



In comparison with the IHC on the left, the same paraffin-embedded Human colon cancer tissue is first treated with fusion protein and then with D221329(Anti-TGM2 Antibody) at dilution 1/15.



Gel: 10%SDS-PAGE, Lysate: 50 µg;
Lane 1-3: Lovo cells, hela cells, human liver cancer tissue;
Primary antibody: 216833(TGM2 Antibody) at dilution 1/150;
Secondary antibody: Goat anti rabbit IgG at 1/8000 dilution;
Exposure time: 1 minute



Product Description

Pioneering GTPase and Oncogene Product Development since 2010
