

THAP3 RABBIT PAB

Cat.#: S221009

Product Name: Anti-THAP3 Rabbit Polyclonal Antibody

Synonyms:

UNIPROT ID: Q8WTV1 (Gene Accession - NP_001182682)

Background: THAP3 (THAP domain-containing protein 3) is a 239 amino acid protein that contains one THAP-type zinc finger and exists as three alternatively spliced isoforms. The gene that encodes THAP3 contains roughly 10,721 bases and maps to human chromosome 1p36.31. Spanning about 260 million base pairs and comprising nearly 8% of the human genome, chromosome 1 is the largest human chromosome.

Immunogen: Synthetic peptide of human THAP3

Applications: ELISA, WB, IHC

Recommended Dilutions: IHC: 25-100;WB: 500-2000;ELISA: 2000-5000

Host Species: Rabbit

Clonality: Rabbit Polyclonal

Isotype: Immunogen-specific rabbit IgG

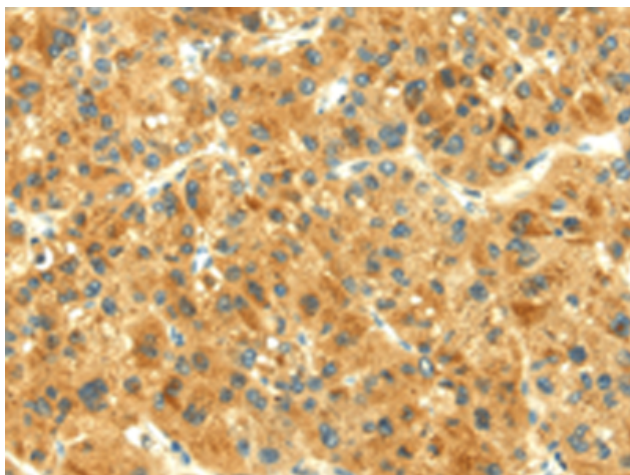
Purification: Antigen affinity purification

Species Reactivity: Human

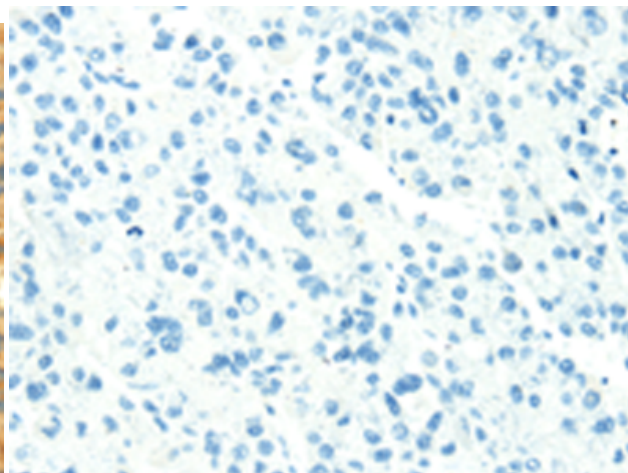
Constituents: PBS (without Mg²⁺ and Ca²⁺), pH 7.4, 150 mM NaCl, 0.05% Sodium Azide and 40% glycerol

Research Areas: Epigenetics and Nuclear Signaling

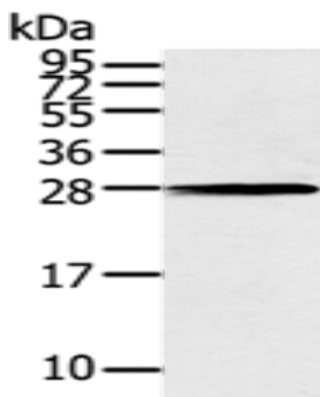
Storage & Shipping: Store at -20°C. Avoid repeated freezing and thawing



Immunohistochemistry analysis of paraffin embedded Human liver cancer tissue using 221009(THAP3 Antibody) at a dilution of 1/30(Cytoplasm).



In comparison with the IHC on the left, the same paraffin-embedded Human liver cancer tissue is first treated with the synthetic peptide and then with 221009(Anti-THAP3 Antibody) at dilution 1/30.



Gel: 12%SDS-PAGE, Lysate: 40 μ g;
Lane: 231 cells;
Primary antibody: 221009(THAP3 Antibody) at dilution 1/200;
Secondary antibody: Goat anti rabbit IgG at 1/8000 dilution;
Exposure time: 30 seconds