

THEM5 RABBIT PAB

Cat.#: S218119

Product Name: Anti-THEM5 Rabbit Polyclonal Antibody

Synonyms: ACOT15

UNIPROT ID: Q8NIQ8 (Gene Accession - BC112239)

Background: Enables palmitoyl-CoA hydrolase activity. Involved in long-chain fatty-acyl-CoA metabolic process. Located in mitochondrial matrix. [provided by Alliance of Genome Resources, Apr 2022]

Immunogen: Fusion protein of human THEM5

Applications: ELISA, IHC

Recommended Dilutions: IHC: 100-300; ELISA: 5000-10000

Host Species: Rabbit

Clonality: Rabbit Polyclonal

Isotype: Immunogen-specific rabbit IgG

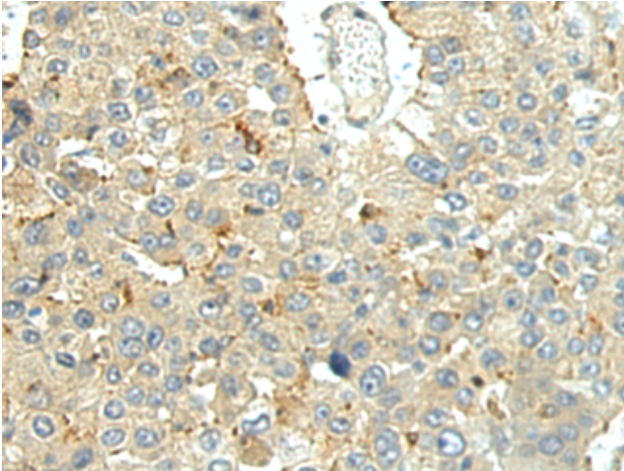
Purification: Antigen affinity purification

Species Reactivity: Human

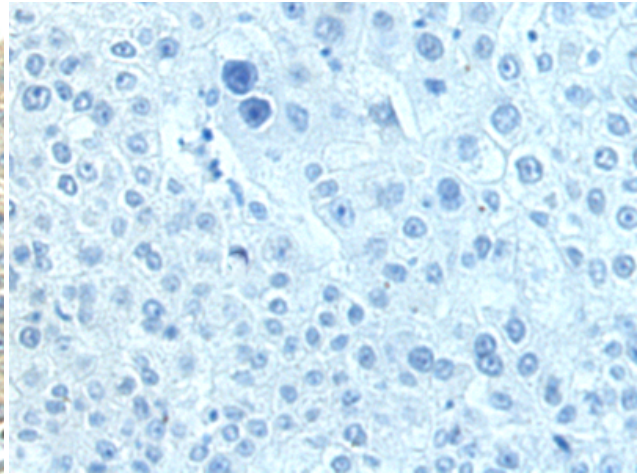
Constituents: PBS (without Mg²⁺ and Ca²⁺), pH 7.4, 150 mM NaCl, 0.05% Sodium Azide and 40% glycerol

Research Areas: Cell Biology

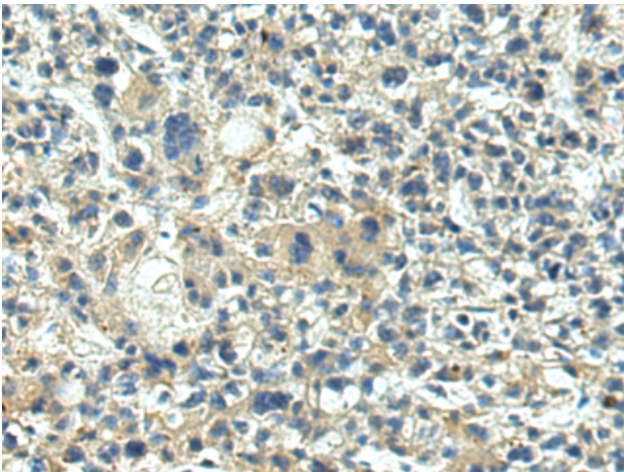
Storage & Shipping: Store at -20°C. Avoid repeated freezing and thawing



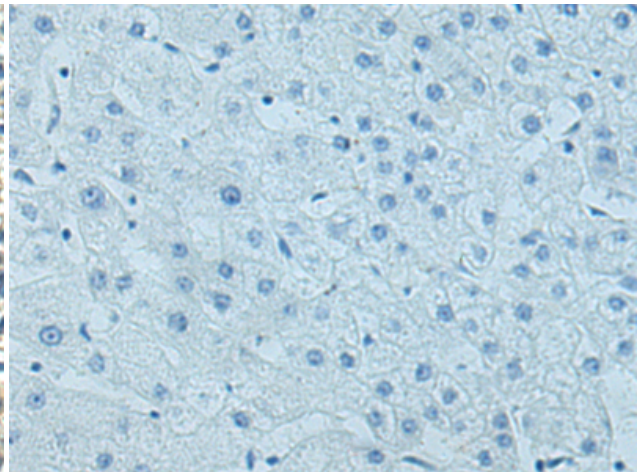
Immunohistochemistry analysis of paraffin embedded Human liver cancer tissue using 218119 (THEM5 Antibody) at a dilution of 1/80 (Cytoplasm).



In comparison with the IHC on the left, the same paraffin-embedded Human liver cancer tissue is first treated with the fusion protein and then with 218119 (Anti-THEM5 Antibody) at dilution 1/80.



The image on the left is immunohistochemistry of paraffin-embedded Human prostate cancer tissue using 218119 (Anti-THEM5 Antibody) at a dilution of 1/80.



In comparison with the IHC on the left, the same paraffin-embedded Human prostate cancer tissue is first treated with fusion protein and then with D223754 (Anti-THEM5 Antibody) at dilution 1/80.