

THEMIS2 RABBIT PAB

Cat.#: S218110

Product Name: Anti-THEMIS2 Rabbit Polyclonal Antibody

Synonyms: ICBI; ICB-1; Clorf38

UNIPROT ID: Q5TEJ8 (Gene Accession - BC132692)

Background: Predicted to be involved in T cell receptor signaling pathway and regulation of B cell activation. Predicted to be active in cytoplasm and nucleus.

Immunogen: Fusion protein of human THEMIS2

Applications: ELISA, IHC

Recommended Dilutions: IHC: 50-200; ELISA: 5000-10000

Host Species: Rabbit

Clonality: Rabbit Polyclonal

Isotype: Immunogen-specific rabbit IgG

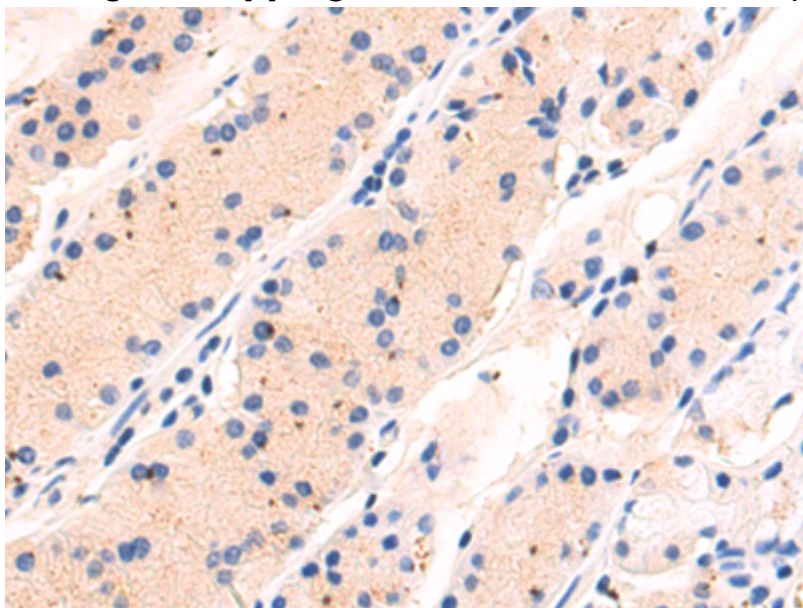
Purification: Antigen affinity purification

Species Reactivity: Human

Constituents: PBS (without Mg²⁺ and Ca²⁺), pH 7.4, 150 mM NaCl, 0.05% Sodium Azide and 40% glycerol

Research Areas: Immunology

Storage & Shipping: Store at -20°C. Avoid repeated freezing and thawing



Immunohistochemistry analysis of paraffin-embedded Human esophagus cancer tissue using 218110 (THEMIS2 Antibody) at a dilution of 1/80 (Cytoplasm).



Product Description

Pioneering GTPase and Oncogene Product Development since 2010
