

## THIOREDOXIN LIKE PROTEIN 1 RABBIT MAB

**Cat.#:** N263040

**Product Name:** Anti-Thioredoxin Like Protein 1 Rabbit Monoclonal Antibody

**Synonyms:** TxI; TXNL; TRP32; TXL-1; HEL-S-114

**UNIPROT ID:** O43396

**Background:** Active thioredoxin with a redox potential of about -250 mV.

**Immunogen:** A synthetic peptide of human TXNL1

**Applications:** WB,IHC-F,IHC-P,ICC/IF

**Recommended Dilutions:** WB: 1/500-1/1000 IHC: 1/50-1/100 IF: 1/50-1/200

**Host Species:** Rabbit

**Clonality:** Rabbit Monoclonal

**Clone ID:** R06-8C2

**MW:** Calculated MW: 32 kDa; Observed MW: 32 kDa

**Isotype:** IgG

**Purification:** Affinity Purified

**Species Reactivity:** Human,Mouse,Rat

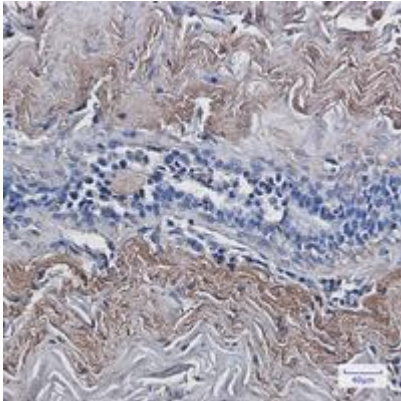
**Conjugation:** Unconjugated

**Modification:** Unmodified

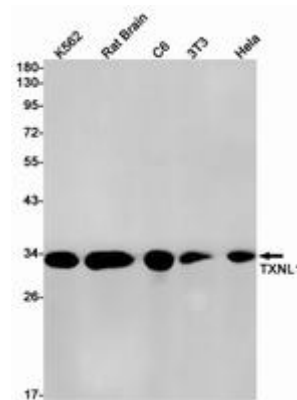
**Constituents:** PBS (without Mg<sup>2+</sup> and Ca<sup>2+</sup>), pH 7.3 containing 50% glycerol, 0.5% BSA and 0.02% sodium azide

**Research Areas:** Signal Transduction

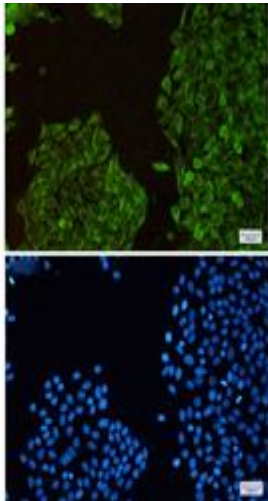
**Storage & Shipping:** Store at -20°C. Avoid repeated freezing and thawing



Immunohistochemistry analysis of paraffin-embedded Human breast cancer using TXNL1 antibody. High-pressure and temperature Sodium Citrate pH 6.0 was used for antigen retrieval.



Western blot analysis of TXNL1 in K562, rat Brain, C6, 3T3, Hela lysates using Thioredoxin Like Protein 1 antibody.



Immunocytochemistry analysis of TXNL1 (green) in Hela using TXNL1 antibody, and DAPI (blue)