

## THIOREDOXIN RABBIT MAB

**Cat.#:** N261628

**Product Name:** Anti-Thioredoxin Rabbit Monoclonal Antibody

**Synonyms:** TXN; ADF; ATL-derived factor; SASP; Thioredoxin; TRX1; Thioredoxin delta 3; TRX; TXN delta 3; TRDX

**UNIPROT ID:** P10599

**Background:** Thioredoxin (Trx) is a redox protein that is found in several species, such as bacteria, plants and mammals, and contains a conserved active site, consisting of Trp-Cys-Gly-Pro-Cys. Participates in many cellular processes including redox signaling, response to oxidative stress, and protein reduction

**Immunogen:** A synthetic peptide of human Thioredoxin/TRX

**Applications:** WB,IHC-F,IHC-P,ICC/IF,IP

**Recommended Dilutions:** WB: 1/1000-1/10000 IHC: 1/50-1/200 IF: 1/100-1/500  
IP: 1/20

**Host Species:** Rabbit

**Clonality:** Rabbit Monoclonal

**Clone ID:** R07-4H5

**MW:** Calculated MW: 12 kDa; Observed MW: 12 kDa

**Isotype:** IgG

**Purification:** Affinity Purified

**Species Reactivity:** Human

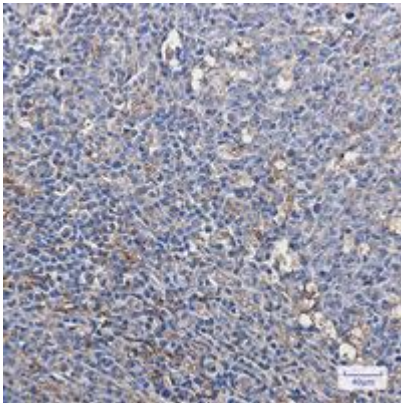
**Conjugation:** Unconjugated

**Modification:** Unmodified

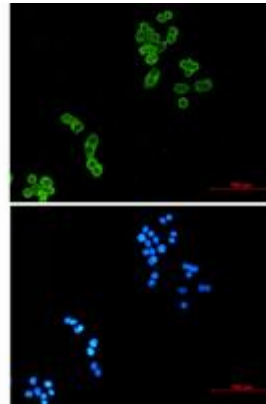
**Constituents:** PBS (without Mg<sup>2+</sup> and Ca<sup>2+</sup>), pH 7.3 containing 50% glycerol, 0.5% BSA and 0.02% sodium azide

**Research Areas:** Tags & Cell Markers

**Storage & Shipping:** Store at -20°C. Avoid repeated freezing and thawing



Immunohistochemistry analysis of paraffin-embedded Human tonsil using Thioredoxin/TRX antibody. High-pressure and temperature Sodium Citrate pH 6.0 was used for antigen retrieval.



Immunocytochemistry analysis of Thioredoxin (green) in HeLa using Thioredoxin antibody, and DAPI (blue).



Western blot analysis of Thioredoxin in Jurkat, HeLa lysates using Thioredoxin antibody.