

THNSL1 RABBIT PAB

Cat.#: S219022

Product Name: Anti-THNSL1 Rabbit Polyclonal Antibody

Synonyms: TSH1

UNIPROT ID: Q8IYQ7 (Gene Accession - BC016697)

Background: THNSL1 (threonine synthase-like 1), also known as TSH1, is a 743 amino acid member of the serine/threonine dehydratase family. Expressed primarily in brain and endocrine glands, THNSL1 is thought to function as a pyridoxal-5'-phosphate (PLP)-dependent enzyme that uses pyridoxal phosphate as a cofactor. THNSL1 shares similarity with bacterial threonine synthases (which synthesize threonine from aspartic acid), suggesting that THNSL1 may have once participated in de novo threonine synthesis within the body, but has since lost its original metabolic role.

Immunogen: Fusion protein of human THNSL1

Applications: ELISA, WB, IHC

Recommended Dilutions: IHC: 50-300;WB: 200-1000;ELISA: 5000-10000

Host Species: Rabbit

Clonality: Rabbit Polyclonal

Isotype: Immunogen-specific rabbit IgG

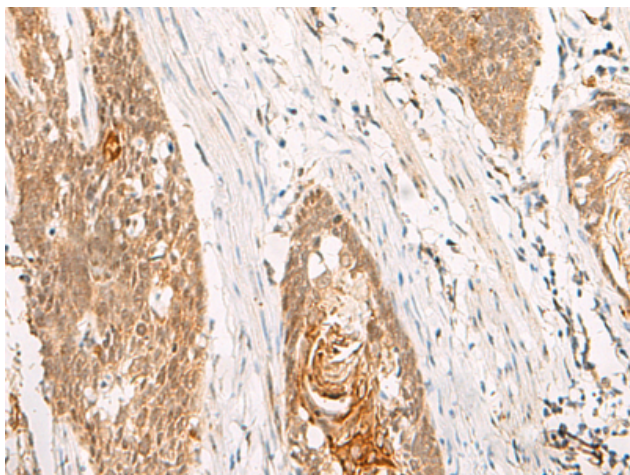
Purification: Antigen affinity purification

Species Reactivity: Human, Mouse

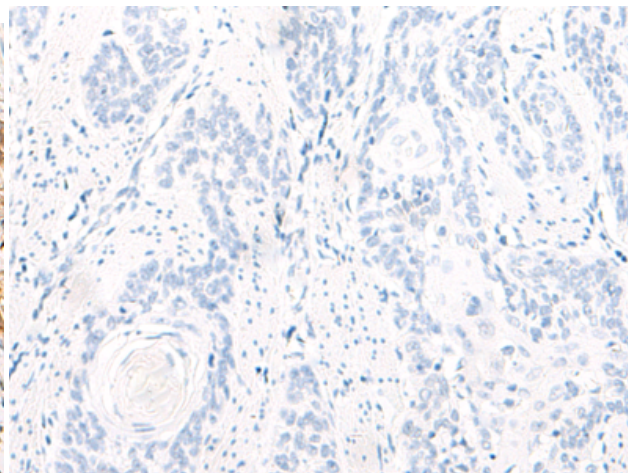
Constituents: PBS (without Mg²⁺ and Ca²⁺), pH 7.4, 150 mM NaCl, 0.05% Sodium Azide and 40% glycerol

Research Areas: Metabolism

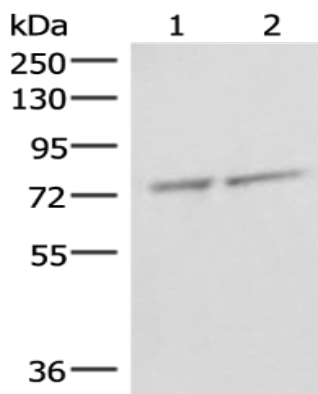
Storage & Shipping: Store at -20°C. Avoid repeated freezing and thawing



Immunohistochemistry analysis of paraffin embedded Human esophagus cancer tissue using 219022(THNSL1 Antibody) at a dilution of 1/45(Nucleus).



In comparison with the IHC on the left, the same paraffin-embedded Human esophagus cancer tissue is first treated with the fusion protein and then with 219022(Anti-THNSL1 Antibody) at dilution 1/45.



Gel: 8%SDS-PAGE, Lysate: 40 μ g;
 Lane 1-2: K562 and 231 cell lysates;
 Primary antibody: 219022(THNSL1 Antibody) at dilution 1/350;
 Secondary antibody: Goat anti rabbit IgG at 1/8000 dilution;
 Exposure time: 1 minute