

## THOC5 RABBIT PAB

**Cat.#:** S216194

**Product Name:** Anti-THOC5 Rabbit Polyclonal Antibody

**Synonyms:** Fmip; PK1.3; fSAP79; C22orf19

**UNIPROT ID:** Q13769 (Gene Accession - NP\_003669 )

**Background:** Predicted to enable mRNA binding activity. Involved in several processes, including monocyte differentiation; negative regulation of DNA damage checkpoint; and viral mRNA export from host cell nucleus. Located in nucleoplasm. Part of THO complex part of transcription export complex. Colocalizes with chromosome, telomeric region. Implicated in breast carcinoma.

**Immunogen:** Synthetic peptide of human THOC5

**Applications:** ELISA, IHC

**Recommended Dilutions:** IHC: 50-200; ELISA: 1000-2000

**Host Species:** Rabbit

**Clonality:** Rabbit Polyclonal

**Isotype:** Immunogen-specific rabbit IgG

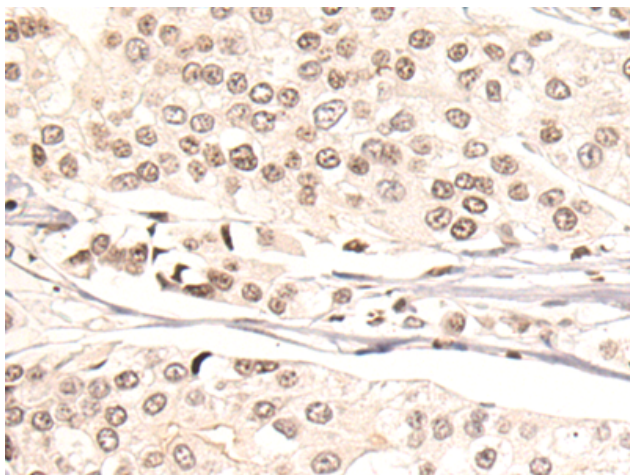
**Purification:** Antigen affinity purification

**Species Reactivity:** Human, Mouse, Rat

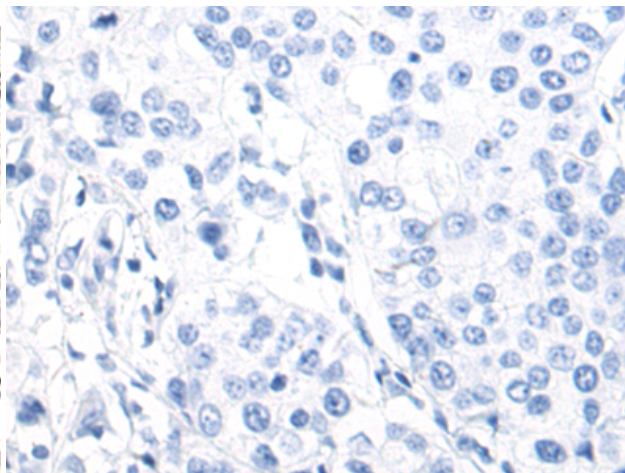
**Constituents:** PBS (without Mg<sup>2+</sup> and Ca<sup>2+</sup>), pH 7.4, 150 mM NaCl, 0.05% Sodium Azide and 40% glycerol

**Research Areas:** Immunology

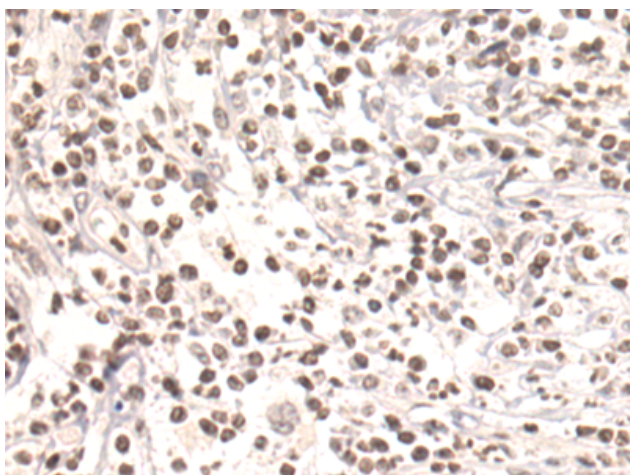
**Storage & Shipping:** Store at -20°C. Avoid repeated freezing and thawing



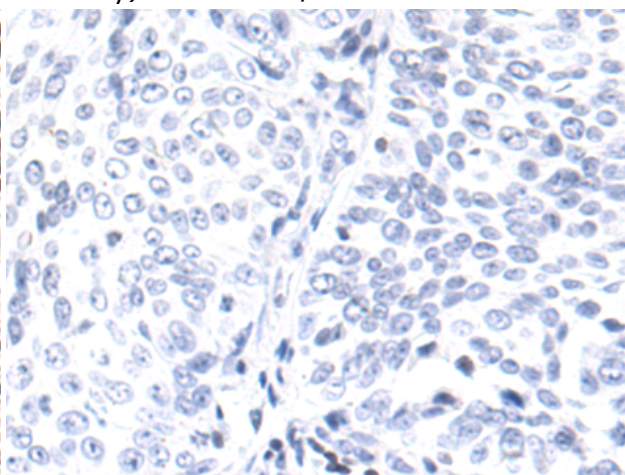
Immunohistochemistry analysis of paraffin embedded Human breast cancer tissue using 216194(THOC5 Antibody) at a dilution of 1/50(Nucleus).



In comparison with the IHC on the left, the same paraffin-embedded Human breast cancer tissue is first treated with the synthetic peptide and then with 216194(Anti-THOC5 Antibody) at dilution 1/50.



The image on the left is immunohistochemistry of paraffin-embedded Human bladder cancer tissue using 216194(Anti-THOC5 Antibody) at a dilution of 1/50.



In comparison with the IHC on the left, the same paraffin-embedded Human bladder cancer tissue is first treated with synthetic peptide and then with D164608(Anti-THOC5 Antibody) at dilution 1/50.