

## THOP1 RABBIT PAB

**Cat.#:** S218771

**Product Name:** Anti-THOP1 Rabbit Polyclonal Antibody

**Synonyms:** TOP; MP78; EP24.15; MEPD\_HUMAN

**UNIPROT ID:** P52888 (Gene Accession - BC013878 )

**Background:** The protein encoded by this gene is a kinase that uses zinc as a cofactor. The encoded oligopeptidase cleaves cytosolic peptides, making them unavailable for display on antigen-presenting cells. This protein also cleaves neuropeptides under 20 aa in length and can degrade beta-amyloid precursor protein to amyloidogenic peptides.

**Immunogen:** Fusion protein of human THOP1

**Applications:** ELISA, WB, IHC

**Recommended Dilutions:** IHC: 25-100;WB: 500-2000;ELISA: 2000-5000

**Host Species:** Rabbit

**Clonality:** Rabbit Polyclonal

**Isotype:** Immunogen-specific rabbit IgG

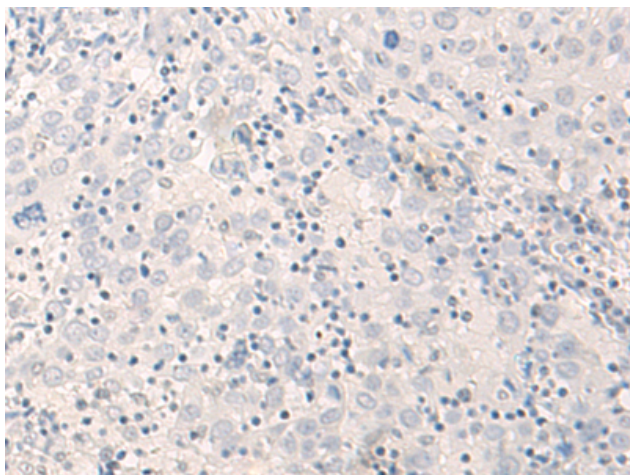
**Purification:** Antigen affinity purification

**Species Reactivity:** Human, Mouse, Rat

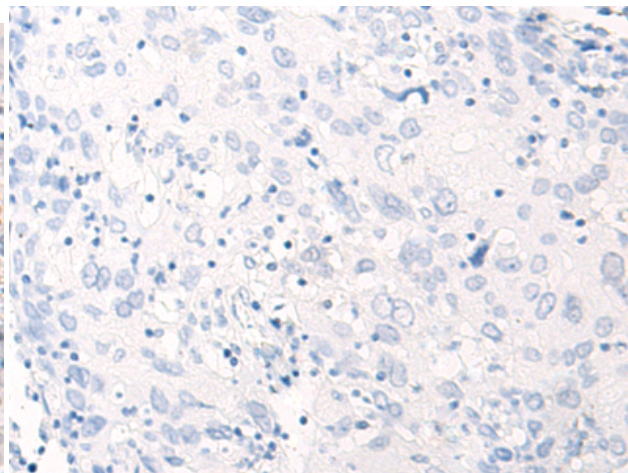
**Constituents:** PBS (without Mg<sup>2+</sup> and Ca<sup>2+</sup>), pH 7.4, 150 mM NaCl, 0.05% Sodium Azide and 40% glycerol

**Research Areas:** Neuroscience

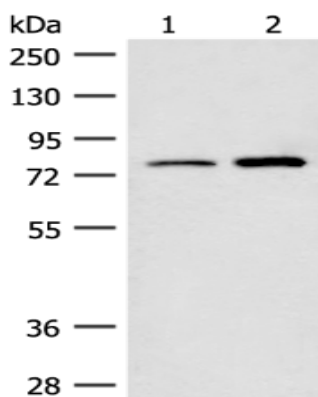
**Storage & Shipping:** Store at -20°C. Avoid repeated freezing and thawing



Immunohistochemistry analysis of paraffin embedded Human cervical cancer tissue using 218771 (THOP1 Antibody) at a dilution of 1/35 (Cytoplasm).



In comparison with the IHC on the left, the same paraffin-embedded Human cervical cancer tissue is first treated with the fusion protein and then with 218771 (Anti-THOP1 Antibody) at dilution 1/35.



Gel: 8%SDS-PAGE, Lysate: 40  $\mu$ g;  
 Lane 1-2: Human cerebrum tissue and Human fetal brain tissue lysates;  
 Primary antibody: 218771 (THOP1 Antibody) at dilution 1/250;  
 Secondary antibody: Goat anti rabbit IgG at 1/8000 dilution;  
 Exposure time: 1 minute