

## THROMBOSPONDIN 2 RABBIT PAB

**Cat.#:** N225133

**Product Name:** Anti-Thrombospondin 2 Rabbit pAb

**Synonyms:** THBS2; TSP2; Thrombospondin-2

**UNIPROT ID:** P35442

**Background:** Adhesive glycoprotein that mediates cell-to-cell and cell-to-matrix interactions.

**Immunogen:** The antiserum was produced against synthesized peptide derived from the C-terminal region of human THBS2. AA range:1000-1050

**Applications:** WB,IHC-P,ELISA

**Recommended Dilutions:** WB: 1/500-1/1000 IHC: 1/50-1/100 ELISA: 1/10000

**Host Species:** Rabbit

**Clonality:** Rabbit Polyclonal

**Clone ID:** -

**MW:** Calculated MW: 130 kDa; Observed MW: 130 kDa

**Isotype:** IgG

**Purification:** Affinity Purified

**Species Reactivity:** Human,Mouse,Rat

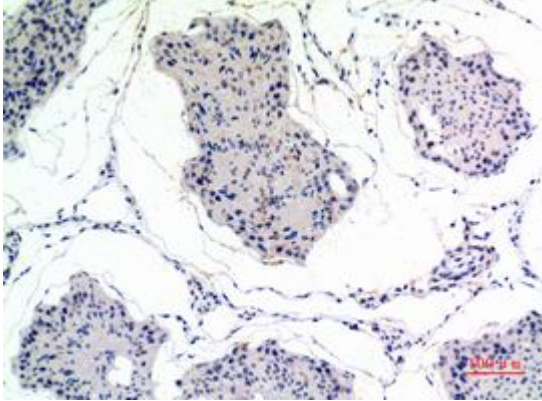
**Conjugation:** Unconjugated

**Modification:** Unmodified

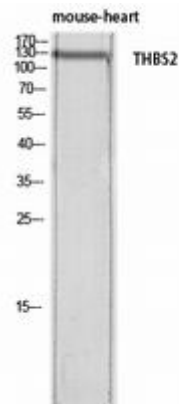
**Constituents:** PBS (without Mg<sup>2+</sup> and Ca<sup>2+</sup>), pH 7.3 containing 50% glycerol, 0.5% BSA and 0.02% sodium azide

**Research Areas:** Cardiovascular

**Storage & Shipping:** Store at -20°C. Avoid repeated freezing and thawing



Immunohistochemistry analysis of paraffin-embedded rat testis using Thrombospondin 2 antibody. High-pressure and temperature Sodium Citrate pH 6.0 was used for antigen retrieval.



Western blot analysis of Thrombospondin 2 in mouse heart lysates using Thrombospondin 2 antibody.