

THTPA RABBIT PAB

Cat.#: S219027

Product Name: Anti-THTPA Rabbit Polyclonal Antibody

Synonyms: THTP; THTPASE

UNIPROT ID: Q9BU02 (Gene Accession - BC002984)

Background: This gene encodes an enzyme which catalyzes the biosynthesis of thiamine diphosphate (vitamin B1) by hydrolysis of thiamine triphosphate. Alternative splicing results in multiple transcript variants.

Immunogen: Fusion protein of human THTPA

Applications: ELISA, IHC

Recommended Dilutions: IHC: 40-200; ELISA: 5000-10000

Host Species: Rabbit

Clonality: Rabbit Polyclonal

Isotype: Immunogen-specific rabbit IgG

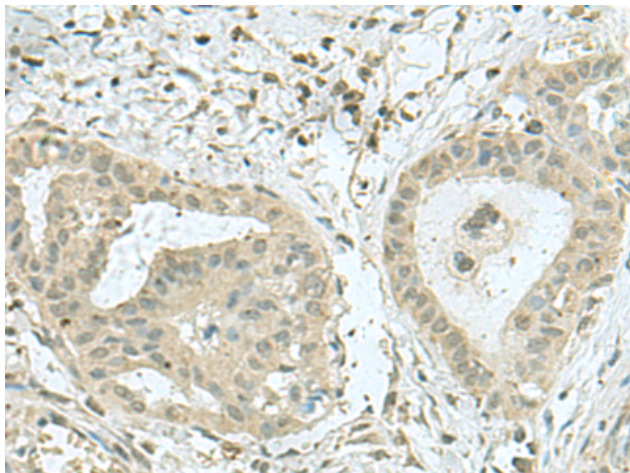
Purification: Antigen affinity purification

Species Reactivity: Human

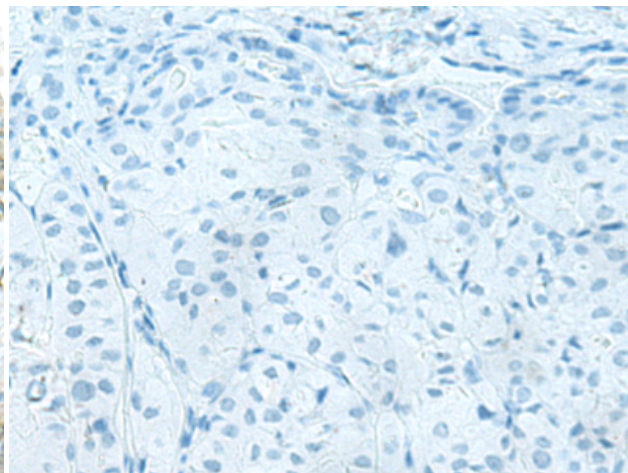
Constituents: PBS (without Mg²⁺ and Ca²⁺), pH 7.4, 150 mM NaCl, 0.05% Sodium Azide and 40% glycerol

Research Areas: Metabolism

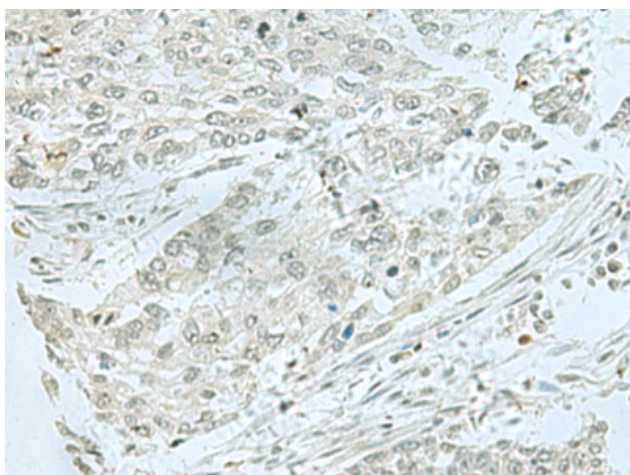
Storage & Shipping: Store at -20°C. Avoid repeated freezing and thawing



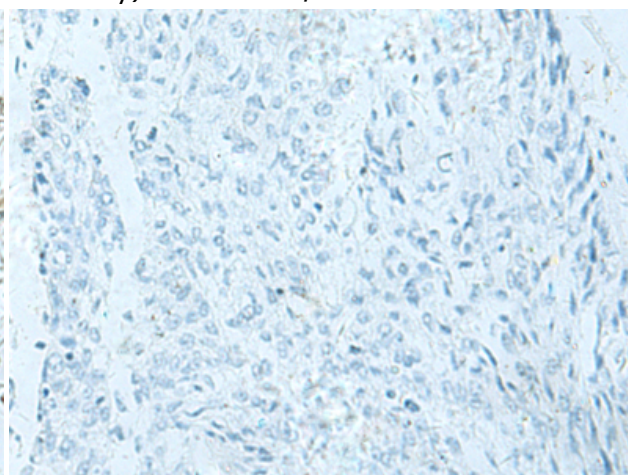
Immunohistochemistry analysis of paraffin embedded Human thyroid cancer tissue using 219027 (THTPA Antibody) at a dilution of 1/70 (Cytoplasm and Nucleus).



In comparison with the IHC on the left, the same paraffin-embedded Human thyroid cancer tissue is first treated with the fusion protein and then with 219027 (Anti-THTPA Antibody) at dilution 1/70.



The image on the left is immunohistochemistry of paraffin-embedded Human lung cancer tissue using 219027 (Anti-THTPA Antibody) at a dilution of 1/70.



In comparison with the IHC on the left, the same paraffin-embedded Human lung cancer tissue is first treated with fusion protein and then with D225677 (Anti-THTPA Antibody) at dilution 1/70.