

THUMPD3 RABBIT PAB

Cat.#: S218746

Product Name: Anti-THUMPD3 Rabbit Polyclonal Antibody

Synonyms:

UNIPROT ID: Q9BV44 (Gene Accession - BC010421)

Background: The function of this protein remains unknown.

Immunogen: Fusion protein of human THUMPD3

Applications: ELISA, WB, IHC

Recommended Dilutions: IHC: 50-200;WB: 500-2000;ELISA: 5000-10000

Host Species: Rabbit

Clonality: Rabbit Polyclonal

Isotype: Immunogen-specific rabbit IgG

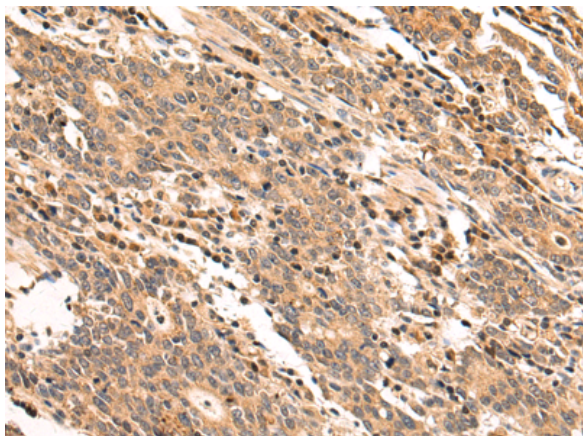
Purification: Antigen affinity purification

Species Reactivity: Human, Mouse

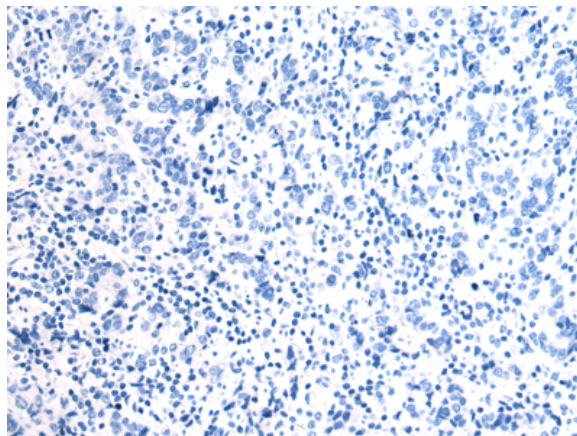
Constituents: PBS (without Mg²⁺ and Ca²⁺), pH 7.4, 150 mM NaCl, 0.05% Sodium Azide and 40% glycerol

Research Areas: Cell Biology

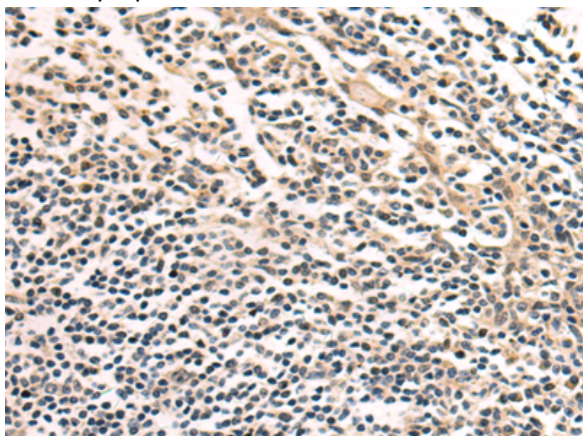
Storage & Shipping: Store at -20°C. Avoid repeated freezing and thawing



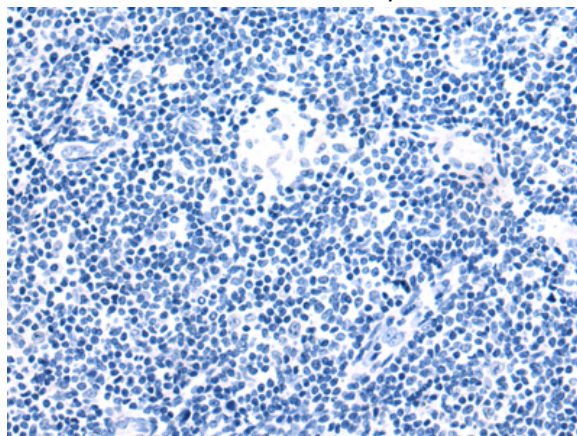
Immunohistochemistry analysis of paraffin embedded Human gastric cancer tissue using 218746 (THUMPD3 Antibody) at a dilution of 1/100 (Cytoplasm).



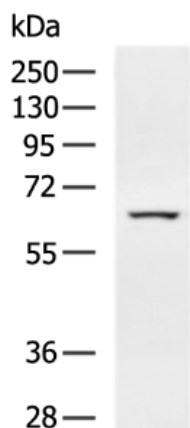
In comparison with the IHC on the left, the same paraffin-embedded Human gastric cancer tissue is first treated with the fusion protein and then with 218746 (Anti-THUMPD3 Antibody) at dilution 1/100.



The image on the left is immunohistochemistry of paraffin-embedded Human tonsil tissue using 218746 (Anti-THUMPD3 Antibody) at a dilution of 1/100.



In comparison with the IHC on the left, the same paraffin-embedded Human tonsil tissue is first treated with fusion protein and then with D225094 (Anti-THUMPD3 Antibody) at dilution 1/100.



Gel: 8% SDS-PAGE, Lysate: 40 μ g;
Lane: LO2 cell lysate;
Primary antibody: 218746 (THUMPD3 Antibody) at dilution 1/400;
Secondary antibody: HRP-conjugated Goat anti rabbit IgG at 1/5000 dilution;
Exposure time: 2 minutes



Product Description

Pioneering GTPase and Oncogene Product Development since 2010
