

THY1 RABBIT PAB

Cat.#: S220233

Product Name: Anti-THY1 Rabbit Polyclonal Antibody

Synonyms: CD90; CDw90

UNIPROT ID: P04216 (Gene Accession - NP_006279)

Background: This gene encodes a cell surface glycoprotein and member of the immunoglobulin superfamily of proteins. The encoded protein is involved in cell adhesion and cell communication in numerous cell types, but particularly in cells of the immune and nervous systems. The encoded protein is widely used as a marker for hematopoietic stem cells. This gene may function as a tumor suppressor in nasopharyngeal carcinoma. Alternative splicing results in multiple transcript variants.

Immunogen: Synthetic peptide of human THY1

Applications: ELISA, IHC

Recommended Dilutions: IHC: 25-100; ELISA: 2000-5000

Host Species: Rabbit

Clonality: Rabbit Polyclonal

Isotype: Immunogen-specific rabbit IgG

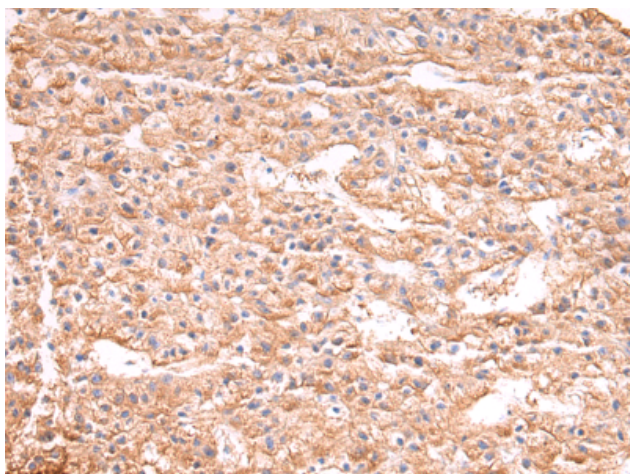
Purification: Antigen affinity purification

Species Reactivity: Human


Constituents: PBS (without Mg²⁺ and Ca²⁺), pH 7.4, 150 mM NaCl, 0.05% Sodium Azide and 40% glycerol

Research Areas: Neuroscience, Immunology, Stem Cells

Storage & Shipping: Store at -20°C. Avoid repeated freezing and thawing



Immunohistochemistry analysis of paraffin-embedded Human prostate cancer tissue using 220233(THY1 Antibody) at a dilution of 1/25(Cytoplasm).

 Immunohistochemistry analysis of paraffin-embedded Human liver cancer tissue using 220233(Anti-THY1 Antibody) at a dilution of 1/25.