

THYMIDINE KINASE RABBIT MAB

Cat.#: N262993

Product Name: Anti-Thymidine Kinase Rabbit Monoclonal Antibody

Synonyms: EC 2.7.1.21; KITH; TK-1; TK1; Thymidine kinase 1; cytosolic

UNIPROT ID: P04183

Background: TK is a cytosolic thymidine kinase. Phosphorylated during mitosis. Its enzymatic activity is high in proliferating cells and peaks during the S-phase of the cell cycle; it is very low in resting cells.

Immunogen: A synthetic peptide of human Thymidine Kinase 1

Applications: WB,IP

Recommended Dilutions: WB: 1/500-1/1000 IP: 1/20

Host Species: Rabbit

Clonality: Rabbit Monoclonal

Clone ID: R05-9G6

MW: Calculated MW: 25 kDa; Observed MW: 25 kDa

Isotype: IgG

Purification: Affinity Purified

Species Reactivity: Human

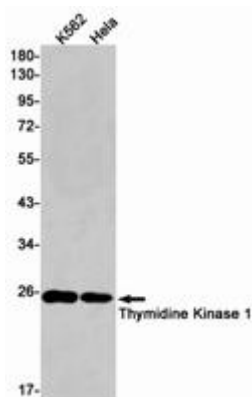
Conjugation: Unconjugated

Modification: Unmodified

Constituents: PBS (without Mg²⁺ and Ca²⁺), pH 7.3 containing 50% glycerol, 0.5% BSA and 0.02% sodium azide

Research Areas: Epigenetics and Nuclear Signaling

Storage & Shipping: Store at -20°C. Avoid repeated freezing and thawing



Western blot analysis of Thymidine Kinase 1 in K562, HeLa lysates using Thymidine Kinase antibody.



Product Description

Pioneering GTPase and Oncogene Product Development since 2010
