

THYMIDINE KINASE RABBIT PAB

Cat.#: N225773

Product Name: Anti-Thymidine Kinase Rabbit pAb

Synonyms: EC 2.7.1.21; KITH; TK-1; TK1; Thymidine kinase 1; cytosolic

UNIPROT ID: P04183

Background: TK is a cytosolic thymidine kinase. Phosphorylated during mitosis. Its enzymatic activity is high in proliferating cells and peaks during the S-phase of the cell cycle; it is very low in resting cells.

Immunogen: A synthesized peptide derived from human Thymidine Kinase 1

Applications: WB,IHC-P,ICC/IF,IP,FC

Recommended Dilutions: WB: 1/500-1/1000 IHC: 1/50-1/100 IF: 1/50-1/200 IP: 1/20 FC: 1/50-1/100

Host Species: Rabbit

Clonality: Rabbit Polyclonal

Clone ID: -

MW: Calculated MW: 25 kDa; Observed MW: 25 kDa

Isotype: IgG

Purification: Affinity Chromatography

Species Reactivity: Human

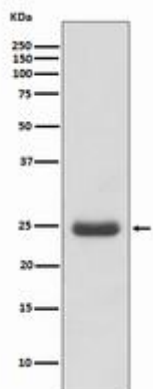
Conjugation: Unconjugated

Modification: Unmodified

Constituents: PBS (without Mg²⁺ and Ca²⁺), pH 7.3 containing 50% glycerol, 0.5% BSA and 0.02% sodium azide

Research Areas: Epigenetics and Nuclear Signaling

Storage & Shipping: Store at -20°C. Avoid repeated freezing and thawing



Western blot analysis of Thymidine Kinase 1 in Molt4 lysates using Thymidine Kinase antibody.