

THYROTROPIN SUBUNIT BETA RABBIT PAB

Cat.#: N225986

Product Name: Anti-Thyrotropin Subunit beta Rabbit pAb

Synonyms: CHNG4; TSHB

UNIPROT ID: P01222

Background: Various hormones are secreted from the anterior pituitary during development and growth. Thyroid Stimulating Hormone (TSH) is secreted from the anterior pituitary and controls thyroid structure and metabolism

Immunogen: A synthesized peptide derived from human TSH beta

Applications: WB,IHC-P

Recommended Dilutions: WB: 1/500-1/1000 IHC: 1/50-1/100

Host Species: Rabbit

Clonality: Rabbit Polyclonal

Clone ID: -

MW: Calculated MW: 16 kDa; Observed MW: 16 kDa

Isotype: IgG

Purification: Affinity Chromatography

Species Reactivity: Human

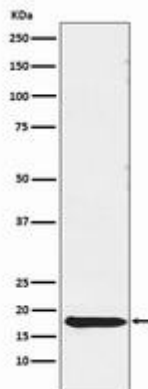
Conjugation: Unconjugated

Modification: Unmodified

Constituents: PBS (without Mg²⁺ and Ca²⁺), pH 7.3 containing 50% glycerol, 0.5% BSA and 0.02% sodium azide

Research Areas: Neuroscience Thyrotropin

Storage & Shipping: Store at -20°C. Avoid repeated freezing and thawing



Western blot analysis of TSH beta in Human pituitary lysates using Thyrotropin Subunit beta antibody.



Product Description

Pioneering GTPase and Oncogene Product Development since 2010
