

TIA1 RABBIT PAB

Cat.#: S217901

Product Name: Anti-TIA1 Rabbit Polyclonal Antibody

Synonyms: WDM; ALS26; TIA-1

UNIPROT ID: P31483 (Gene Accession - BC015944)

Background: The product encoded by this gene is a member of a RNA-binding protein family and possesses nucleolytic activity against cytotoxic lymphocyte (CTL) target cells. It has been suggested that this protein may be involved in the induction of apoptosis as it preferentially recognizes poly(A) homopolymers and induces DNA fragmentation in CTL targets. The major granule-associated species is a 15-kDa protein that is thought to be derived from the carboxyl terminus of the 40-kDa product by proteolytic processing. Alternative splicing resulting in different isoforms has been found for this gene.

Immunogen: Fusion protein of human TIA1

Applications: ELISA, WB, IHC

Recommended Dilutions: IHC: 50-200;WB: 500-2000;ELISA: 5000-10000

Host Species: Rabbit

Clonality: Rabbit Polyclonal

Isotype: Immunogen-specific rabbit IgG

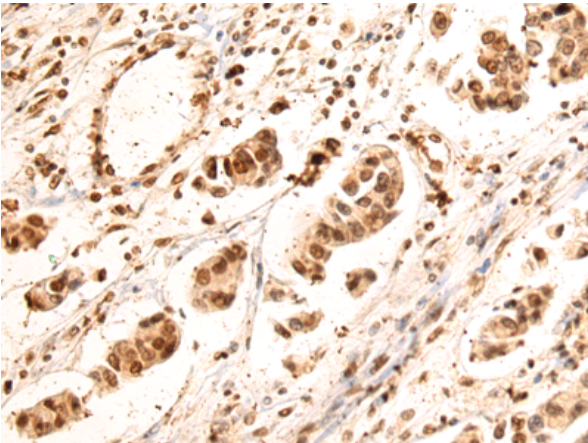
Purification: Antigen affinity purification

Species Reactivity: Human, Mouse

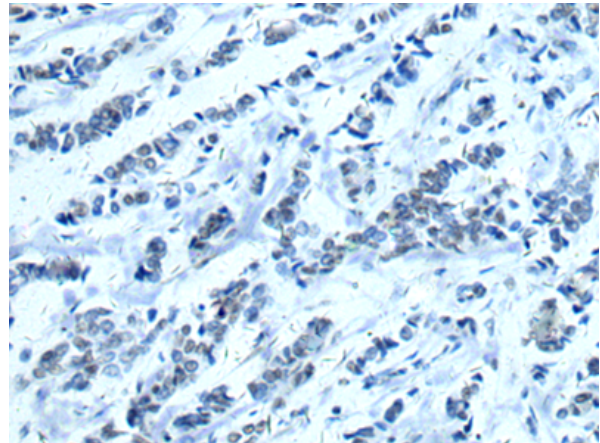
Constituents: PBS (without Mg²⁺ and Ca²⁺), pH 7.4, 150 mM NaCl, 0.05% Sodium Azide and 40% glycerol

Research Areas: Epigenetics and Nuclear Signaling, Cancer, Immunology

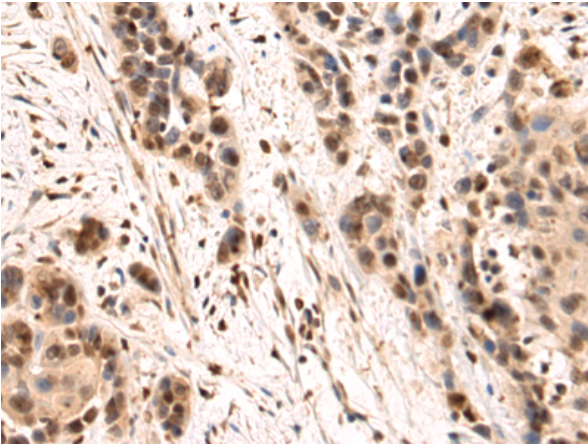
Storage & Shipping: Store at -20°C. Avoid repeated freezing and thawing



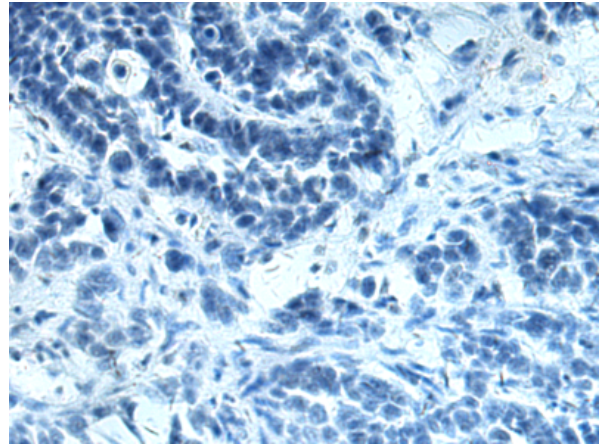
Immunohistochemistry analysis of paraffin embedded Human breast cancer tissue using 217901(TIA1 Antibody) at a dilution of 1/65(Nucleus).



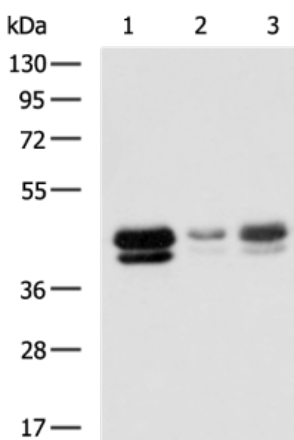
In comparison with the IHC on the left, the same paraffin-embedded Human breast cancer tissue is first treated with the fusion protein and then with 217901(Anti-TIA1 Antibody) at dilution 1/65.



The image on the left is immunohistochemistry of paraffin-embedded Human thyroid cancer tissue using 217901(Anti-TIA1 Antibody) at a dilution of 1/65.



In comparison with the IHC on the left, the same paraffin-embedded Human thyroid cancer tissue is first treated with fusion protein and then with D223330(Anti-TIA1 Antibody) at dilution 1/65.



Gel: 8%SDS-PAGE, Lysate: 40 µg;
 Lane 1-3: LOVO, HeLa, PC-3 cell lysates;
 Primary antibody: 217901(TIA1 Antibody) at dilution 1/800;
 Secondary antibody: HRP-conjugated Goat anti rabbit IgG at 1/5000 dilution;
 Exposure time: 20 seconds



Product Description

Pioneering GTPase and Oncogene Product Development since 2010
