

## TIGAR RABBIT PAB

**Cat.#:** S220237

**Product Name:** Anti-TIGAR Rabbit Polyclonal Antibody

**Synonyms:** FR2BP; C12orf5

**UNIPROT ID:** Q9NQ88 (Gene Accession - NP\_065108 )

**Background:** This gene is regulated as part of the p53 tumor suppressor pathway and encodes a protein with sequence similarity to the bisphosphate domain of the glycolytic enzyme that degrades fructose-2,6-bisphosphate. The protein functions by blocking glycolysis and directing the pathway into the pentose phosphate shunt. Expression of this protein also protects cells from DNA damaging reactive oxygen species and provides some protection from DNA damage-induced apoptosis.

**Immunogen:** Synthetic peptide of human TIGAR

**Applications:** ELISA, WB, IHC

**Recommended Dilutions:** IHC: 100-300;WB: 200-1000;ELISA: 1000-2000

**Host Species:** Rabbit

**Clonality:** Rabbit Polyclonal

**Isotype:** Immunogen-specific rabbit IgG

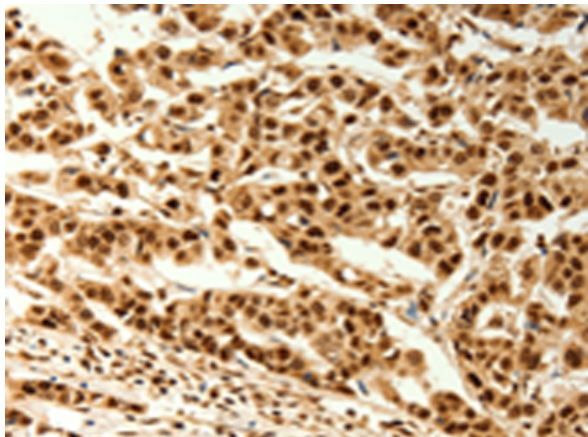
**Purification:** Antigen affinity purification

**Species Reactivity:** Human

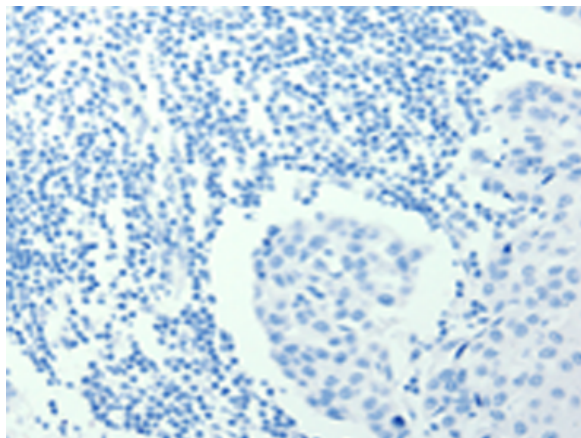
**Constituents:** PBS (without Mg<sup>2+</sup> and Ca<sup>2+</sup>), pH 7.4, 150 mM NaCl, 0.05% Sodium Azide and 40% glycerol

**Research Areas:** Cancer

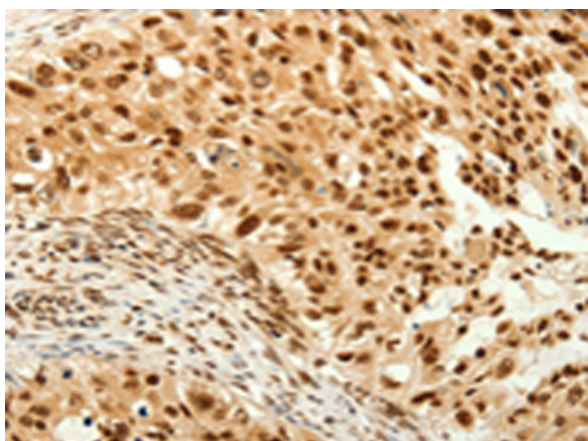
**Storage & Shipping:** Store at -20°C. Avoid repeated freezing and thawing



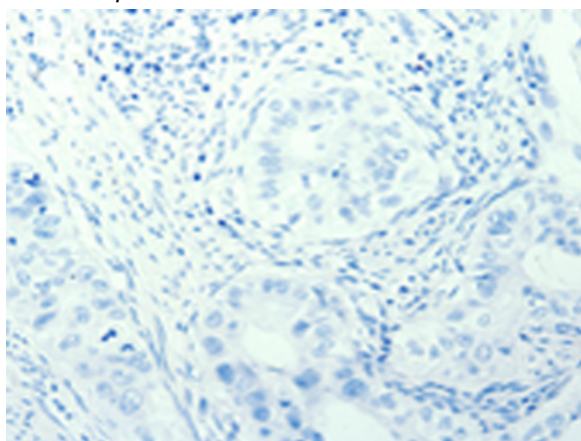
Immunohistochemistry analysis of paraffin embedded Human cervical cancer tissue using 220237(TIGAR Antibody) at a dilution of 1/80(Nucleus,Cytoplasm).



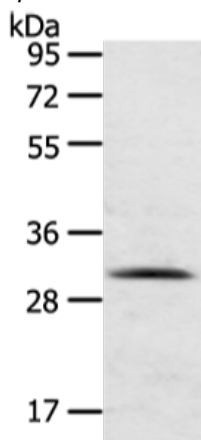
In comparison with the IHC on the left, the same paraffin-embedded Human cervical cancer tissue is first treated with the synthetic peptide and then with 220237(Anti-TIGAR Antibody) at dilution 1/80.



The image on the left is immunohistochemistry of paraffin-embedded Human breast cancer tissue using 220237(Anti-TIGAR Antibody) at a dilution of 1/80.



In comparison with the IHC on the left, the same paraffin-embedded Human breast cancer tissue is first treated with synthetic peptide and then with D261180(Anti-TIGAR Antibody) at dilution 1/80.



Gel: 8%SDS-PAGE, Lysate: 40 µg;  
Lane: Human normal liver tissue;  
Primary antibody: 220237(TIGAR Antibody) at dilution 1/200;  
Secondary antibody: Goat anti rabbit IgG at 1/8000 dilution;  
Exposure time: 10 seconds



# Product Description

Pioneering GTPase and Oncogene Product Development since 2010

---