

TIM3(SABATOLIMAB) MAB

Cat.#: 28576

Product Name: Anti-TIM3(Sabatolimab) Monoclonal Antibody

Synonyms: HAVCR2, TIMD3

Description: Anti-TIM3(sabatolimab) Monoclonal Antibody

Background: Research grade biosimilar. Not for use in therapeutic or diagnostic procedures for humans or animals.

Applications: ELISA, Flow Cyt

Recommended Dilutions: ELISA 1:5000-10000, Flow Cyt 1:100

Host Species: Humanized

Isotype: IgG4

Purification: Purified from cell culture supernatant by affinity chromatography

Species Reactivity: Human TIM3

Constituents: Lyophilized from sterile PBS, pH 7.4. 5 % – 8% trehalose is added as protectants before lyophilization.

Storage & Shipping: Store at -20°C to -80°C for 12 months in lyophilized form. After reconstitution, if not intended for use within a month, aliquot and store at -80°C (Avoid repeated freezing and thawing).

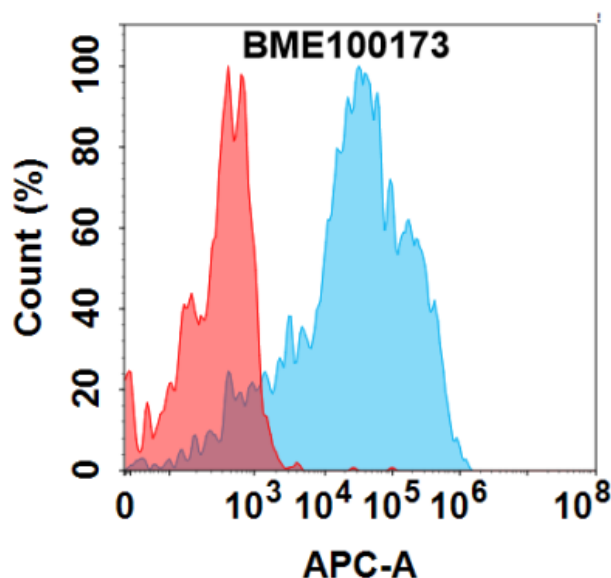


Figure 1. Flow cytometry analysis with 1µg/mL Anti-TIM3(sabatolimab biosimilar) mAb (28576) on Expi293 cells transfected with Human TIM3 protein (Blue histogram) or Expi293 transfected with irrelevant protein (Red histogram).

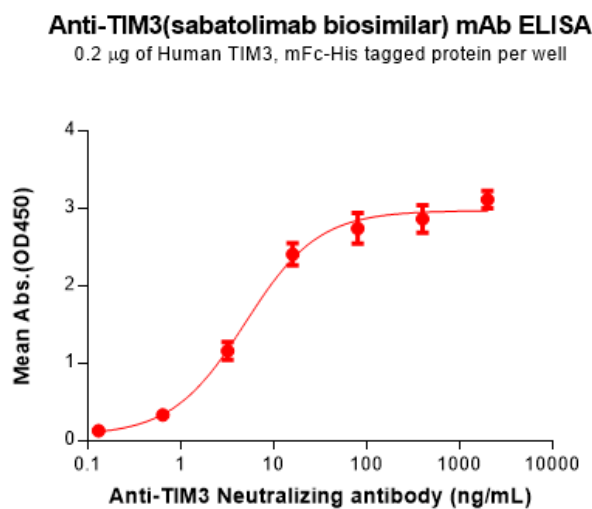


Figure 2. ELISA plate pre-coated by 2 µg/mL (100 µl/well) Human TIM3 Protein, mFc-His Tag(11158) can bind Anti-TIM3 (sabotolimab biosimilar) mAb(28576) in a linear range of 0.64-16 ng/mL.